

# WP3 - Activity 3.4

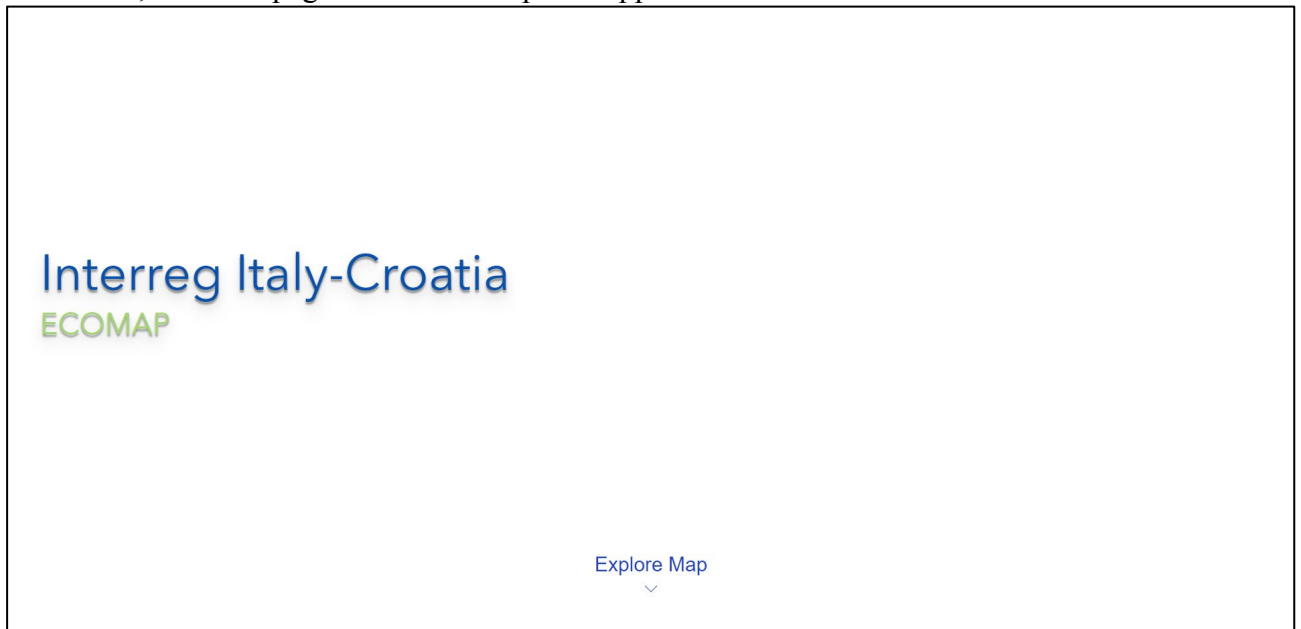
## ICT- GIS dataset

### Deliverable 3.4.1

Harmonization document for data cataloging, Shared database, thematic maps, forecast scenarios

The ECOMAP project web map is an interactive map showing the results of scientific research activities and the places where the studies were performed (sampling activities, geophysical surveys). The web map is available for PC, smartphones, and tablets. This map was created using the ArcGIS software, integrating the scientific information obtained during the activities of the ECOMAP project.

By clicking on the link available on the project website (<https://www.italy-croatia.eu/web/ecomap/docs-and-tools-details>) you will be redirected to the site hosting the map (click: **1** "Tools"; **2** "3.4.1\_ECOMAP GIS\_WEBMAP"; **3** "View"). First, the homepage of the web map will appear.



*Figure 1: webmap homepage screen*

By clicking on the "explore map" button, the user can then access and consult the map. At this point, a satellite image pointed at the Adriatic area will appear. The user can point and zoom in on one of the four project sites or can search for the site to consult (Bibione, Ancona, Split, Podstrana) through the search bar located at the top right (Fig. 2).

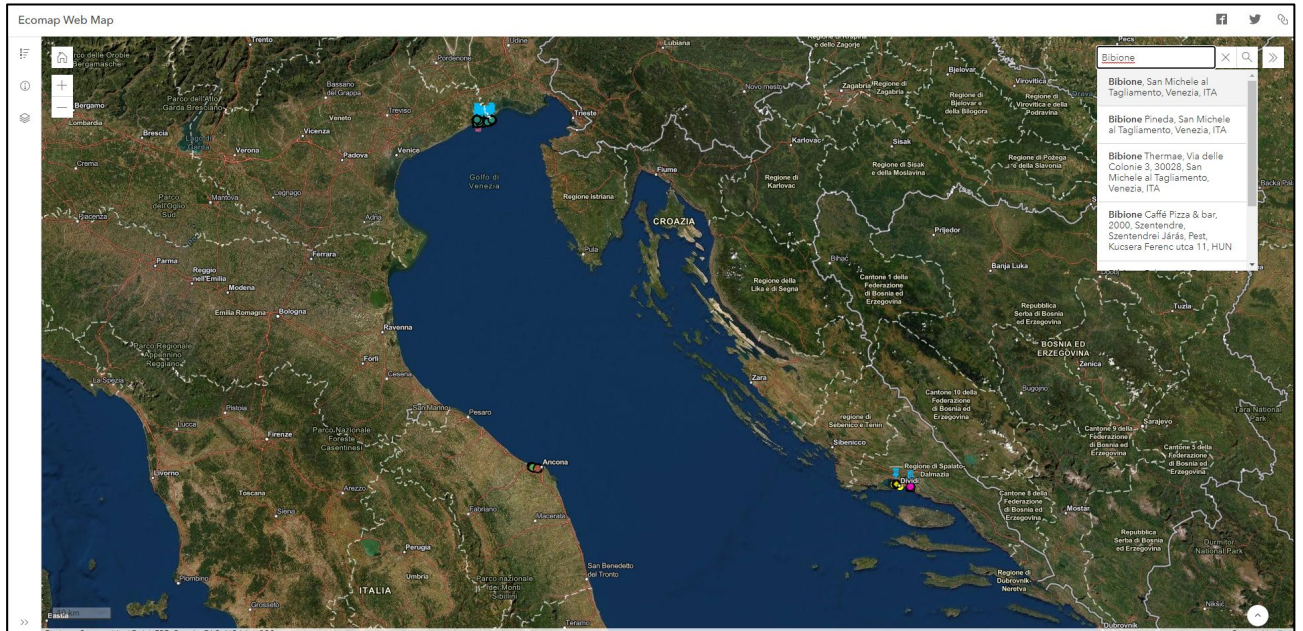


Figure 2: Screenshot of the webmap immediately after logging in. At the top right you can see an example of a location search using the search bar.

At this point the user will be redirected to the chosen location. Here the user will be able to observe numerous icons, each of which is representative of a certain type of study performed at that point. The map has a legend that can be consulted in the bar on the left. The legend is divided into the four sites, therefore by clicking on the legend button the user will be able to know what each icon refers to (Fig.3).

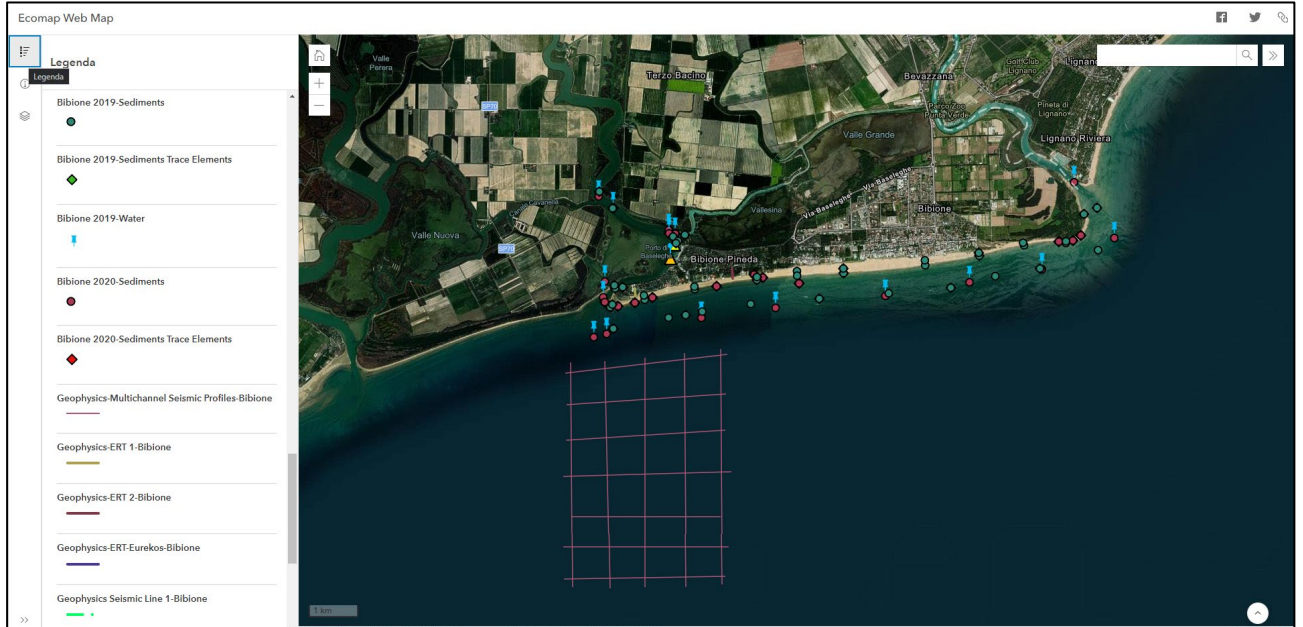
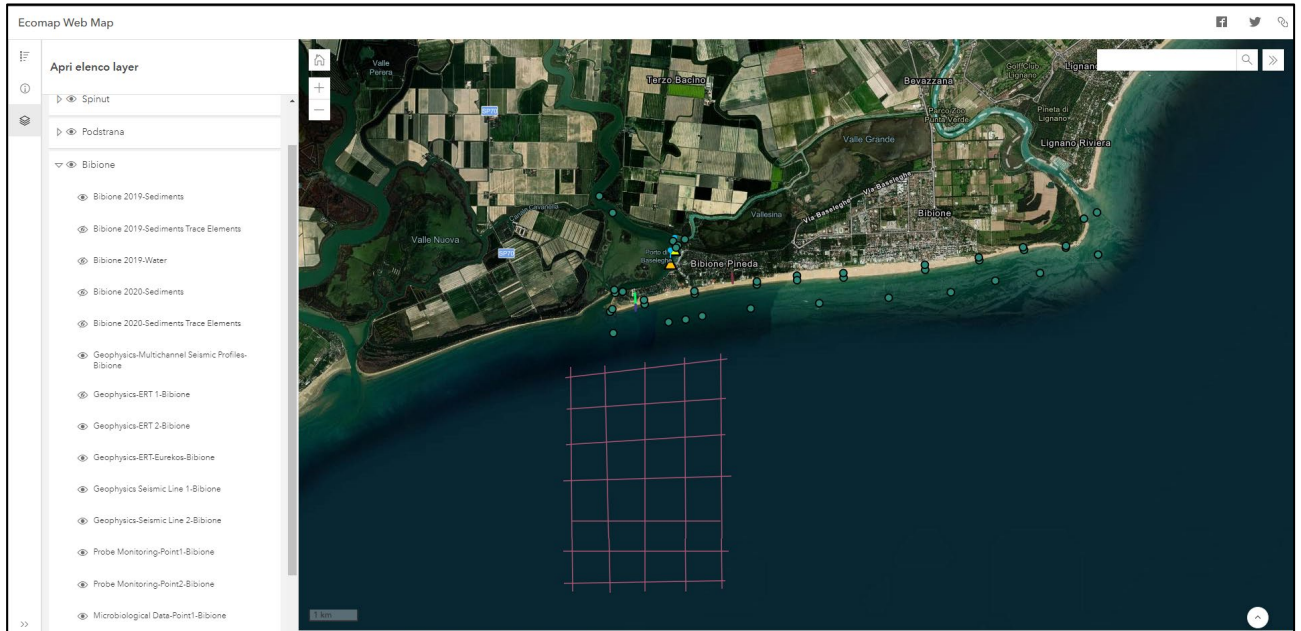


Figure 3: Screen showing an example of consulting the legend.

The user also has the possibility to choose which layers to display. In fact, on the left bar, there is the layer section. Here the user can decide to make some layers visible or not. This will allow him to reduce or increase the number of the information displayed on the map. To do this, simply go to the layer section and click on the layers that you want to hide or keep visible (Fig. 4).



*Figure 4: Screen of the webmap showing an example of using the layer section.*

Each icon on the map contains information (for example, analytical results, type of study, etc.). The user can consult this information by simply clicking on the icon of interest. By doing this, a pop-up relative to the clicked icon will appear and it will be possible to consult the information contained within (Fig.5).



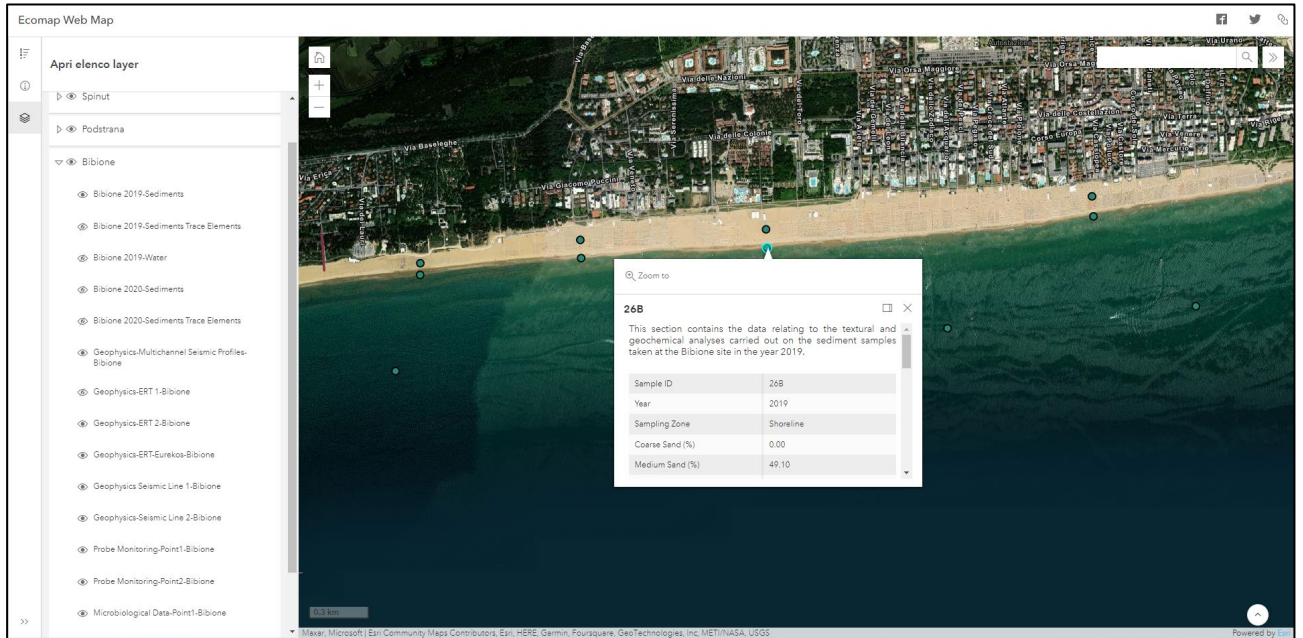


Figure 5: Screen of the webmap showing an example of consulting the icons.