

AdSWiM

2 INFOGRAPHIC
VIDEOS

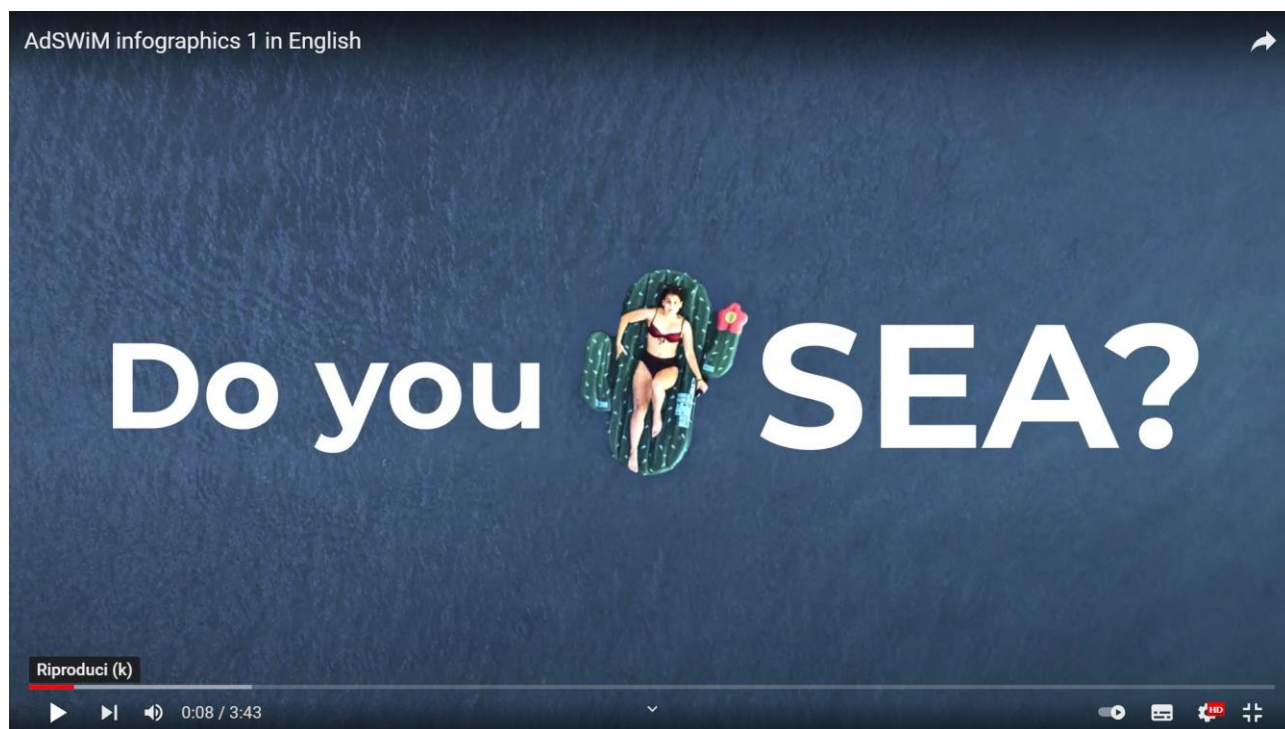
Deliverable 2.2



Deliverable 2.2

2 video infographics videos:

Here attach you can find the video storyboards 1 and 2. The first video has been produced in English with English subtitles, in English with Italian and Croatian subtitles at the beginning of our project, the second one will be put online at the project end by PP1, Municipality of Udine They are available on our [YouTube Channel: ADSWIM PROJECT](#)



Partner of the European Project "ADSWIM": University of Udine (lead partner), CAFC - Friuli Centrale Aqueduct Consortium, OGS - National Institute of Oceanography and Experimental Geophysics, Polytechnic University of Marche, IC-CNR, Crystallography Institute - National Council of Research, Municipality of Pescara, IANPHI - National Institute of Public Hygiene of Zadar (HR), Izvor Ploče Consortium of Dubrovnik (HR), ViK Split Water Management (HR), Metris Centar za Istraživanje Materiala Istarske Županije (HR), University of Split (HR).

Further information: adswimcommunication@gmail.com

Video credits: LETTERAB

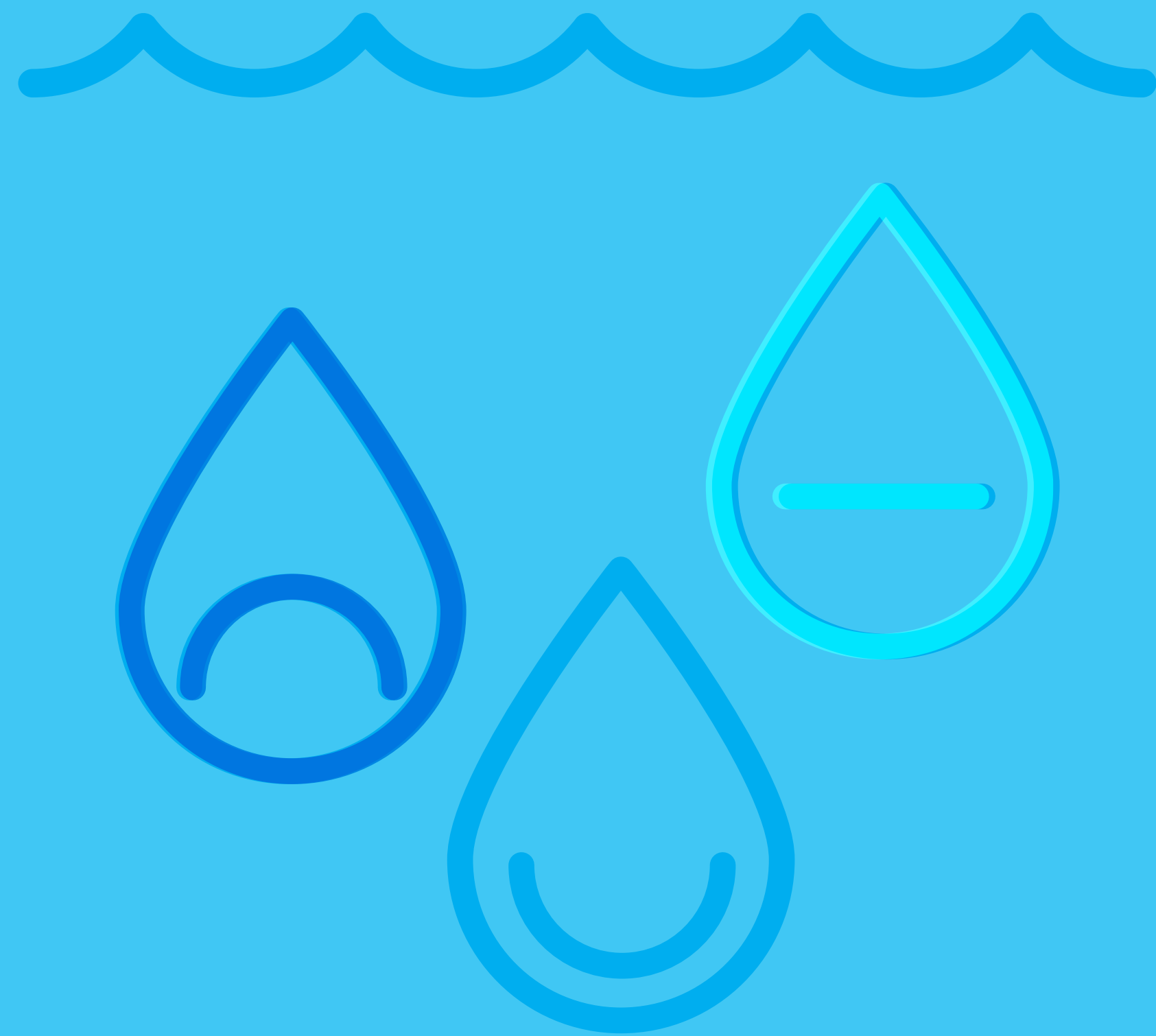


Do you  SEA?

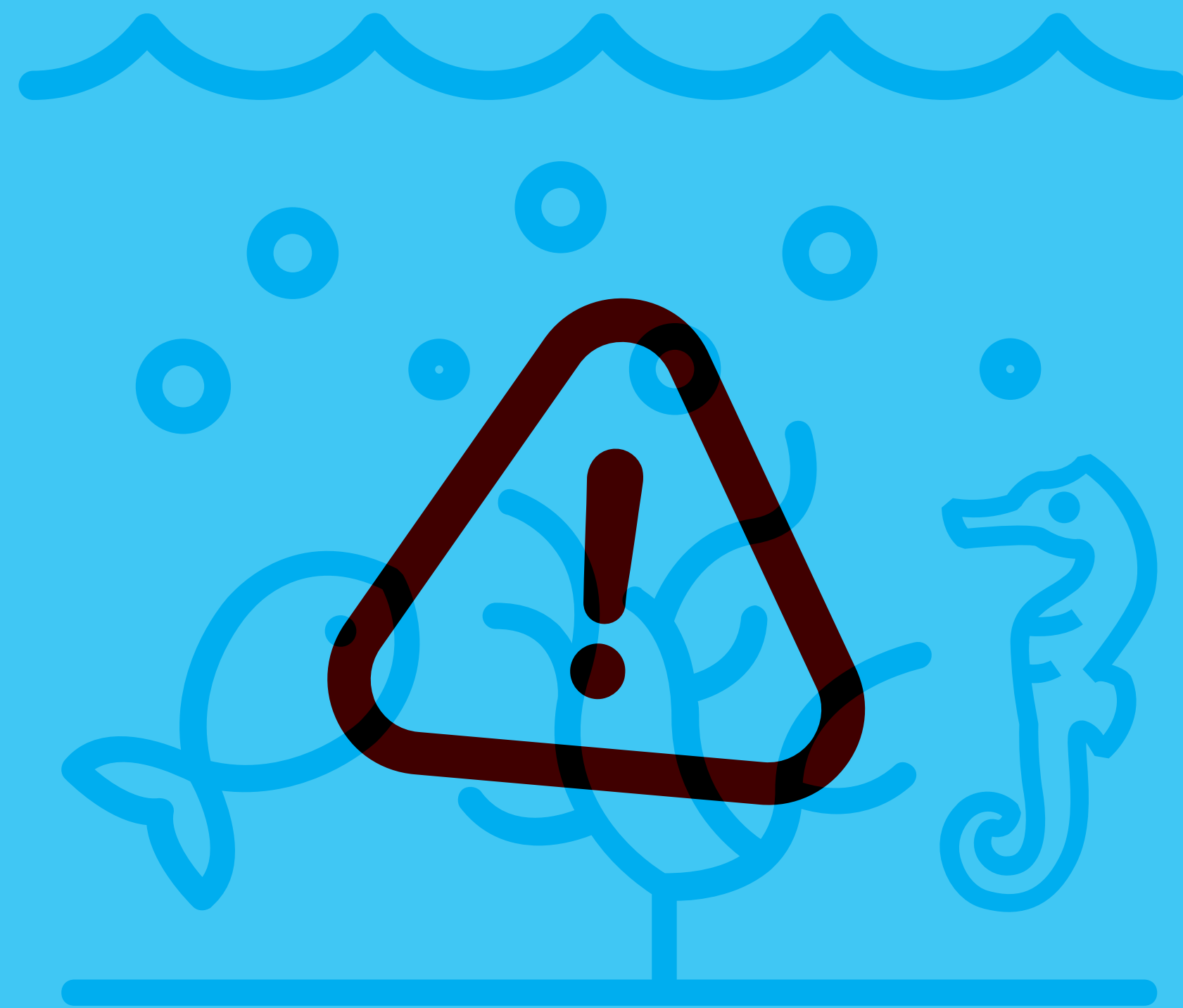


The Adriatic Sea

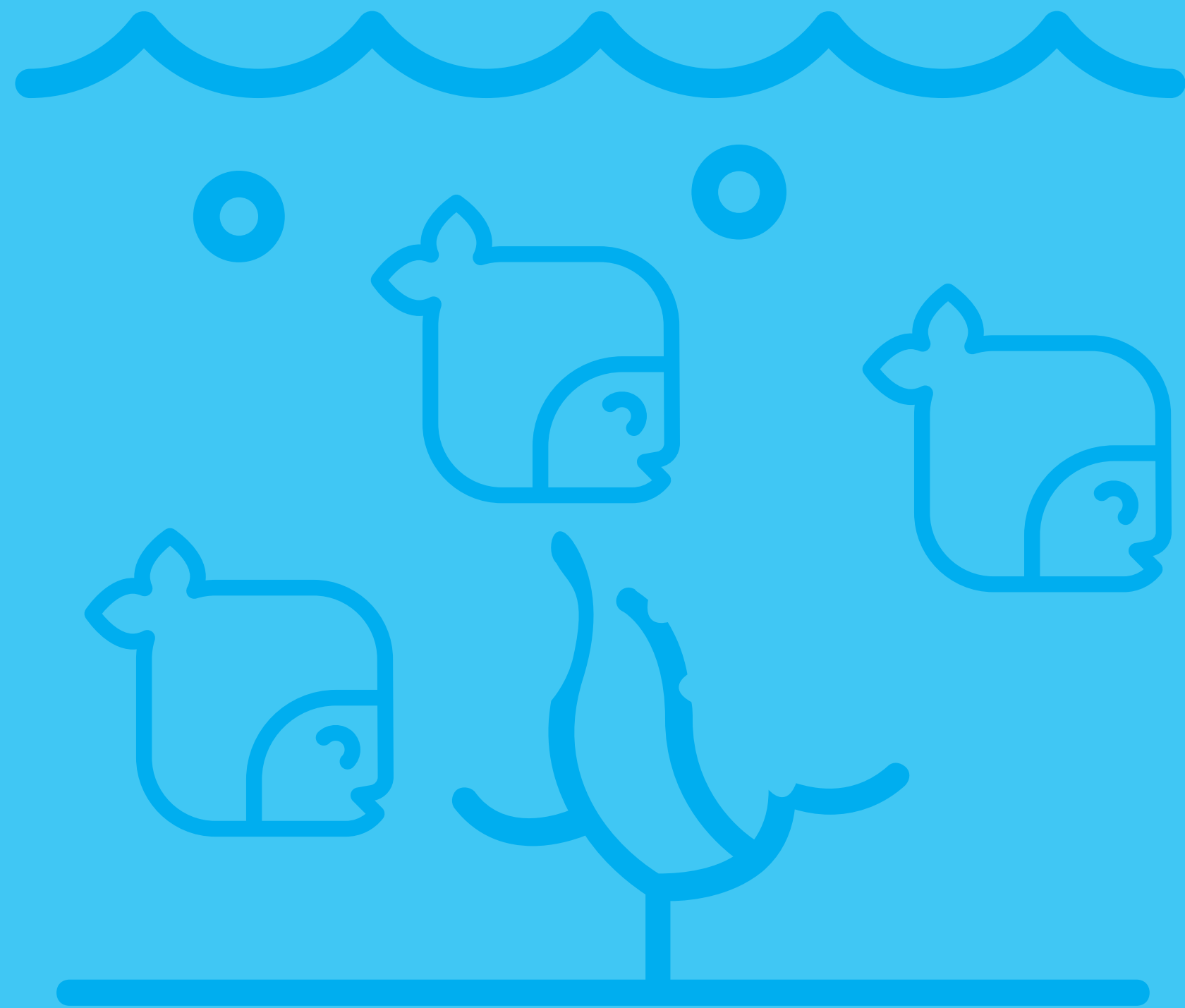




The Adriatic Sea
has a very
heterogeneous
quality level
of the water



**Vitality and
composition of
the microbial
community are
in danger**



The abundance
of species
is **not**
guaranteed
overtime



SO...

**WHAT
CAN WE
DO?**

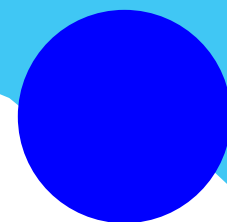
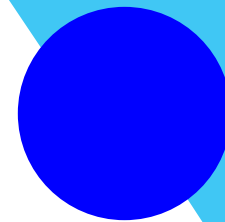
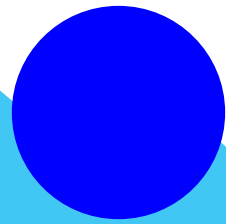
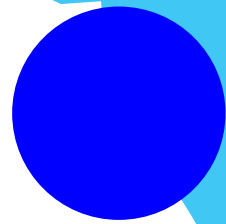
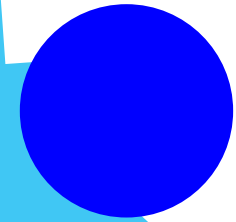
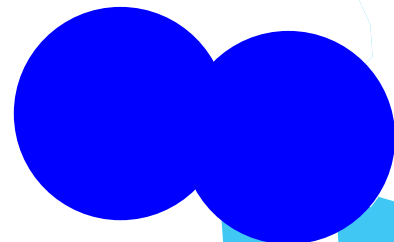


WHAT

CAN AdSWiM

DO?

AdSWiM Partners





**The AdSWiM project
deals with the
UWW and DP
to...**

WITH

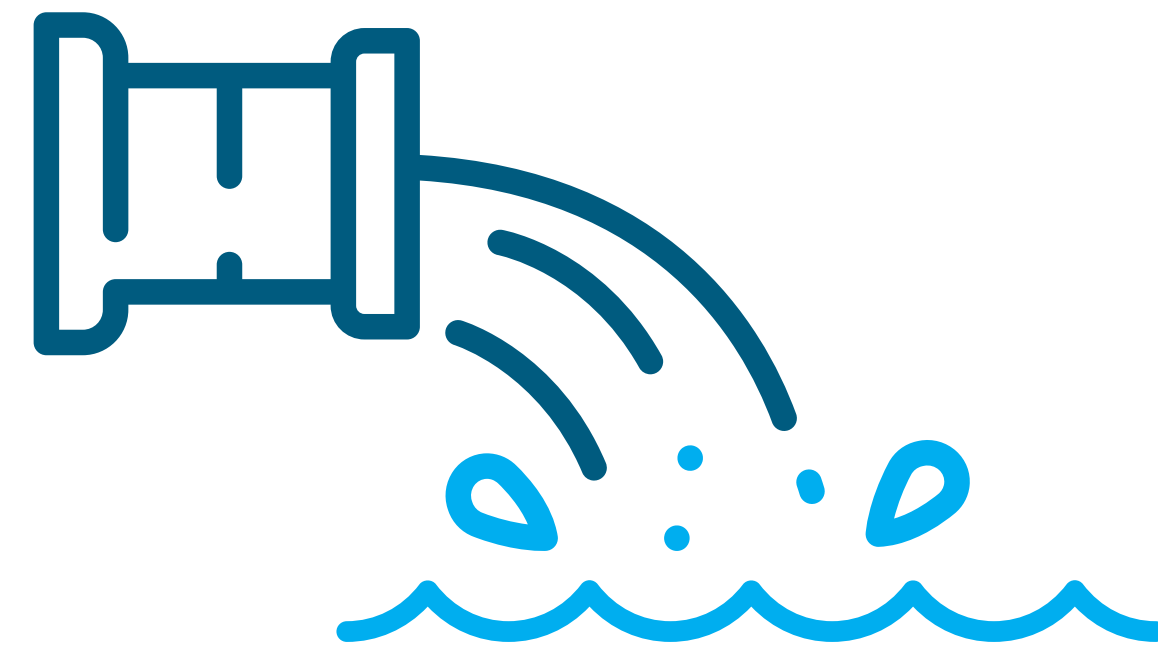
WHAT?

UWW

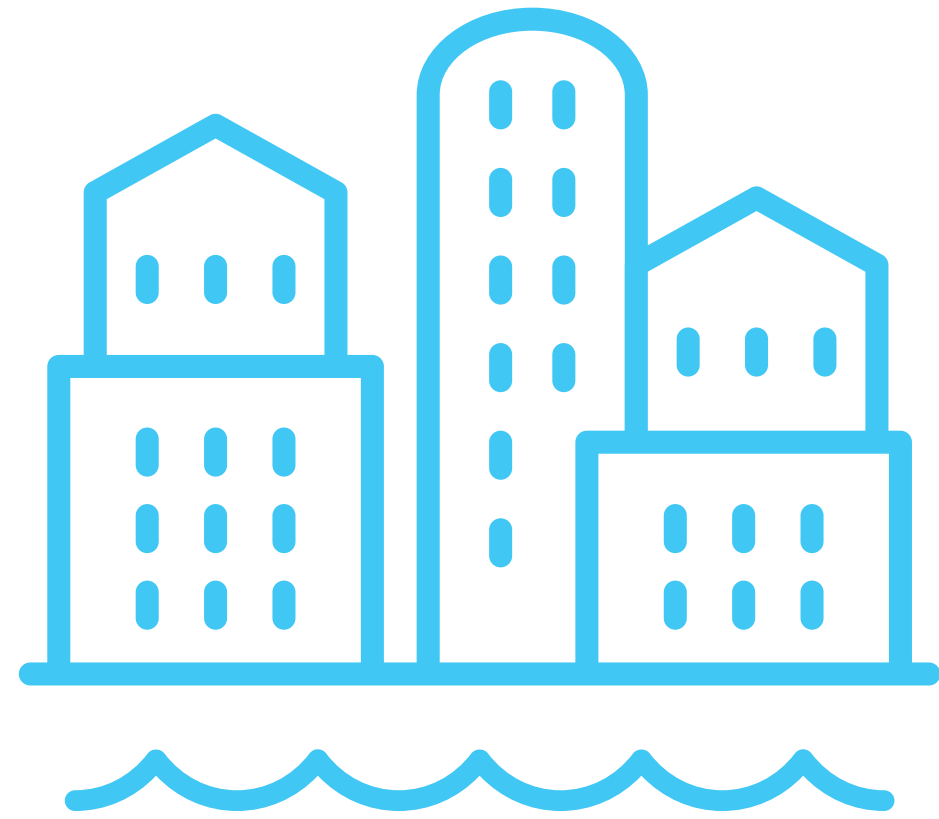
DP

UWW
stands for

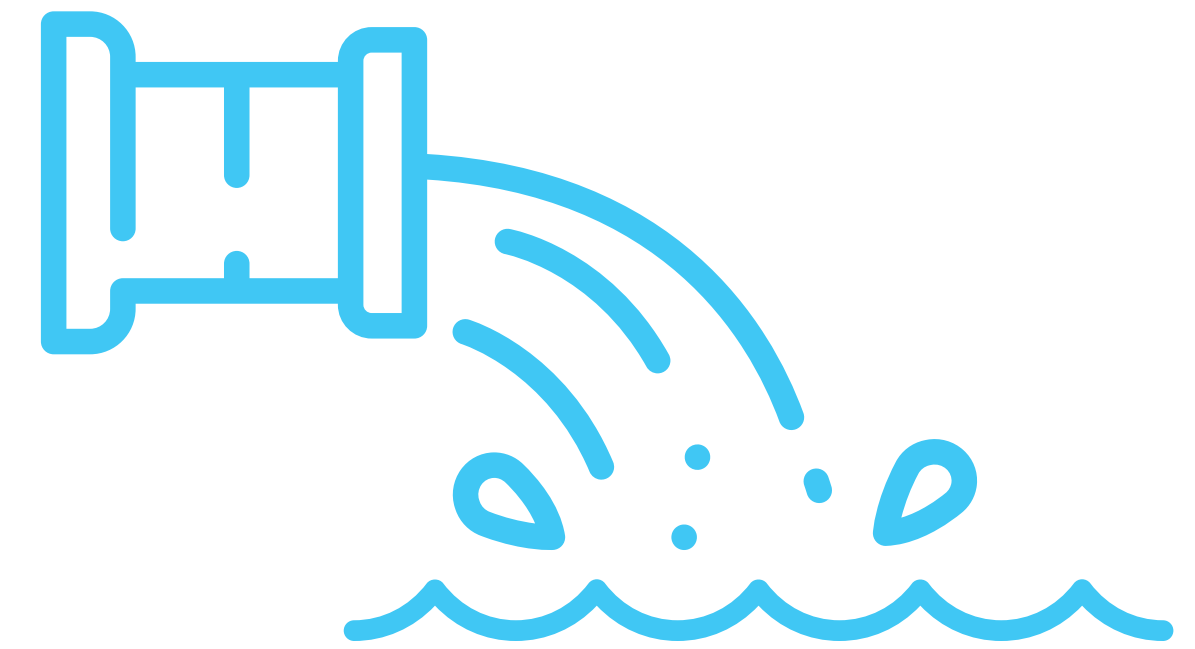
urban **waste water**



urban

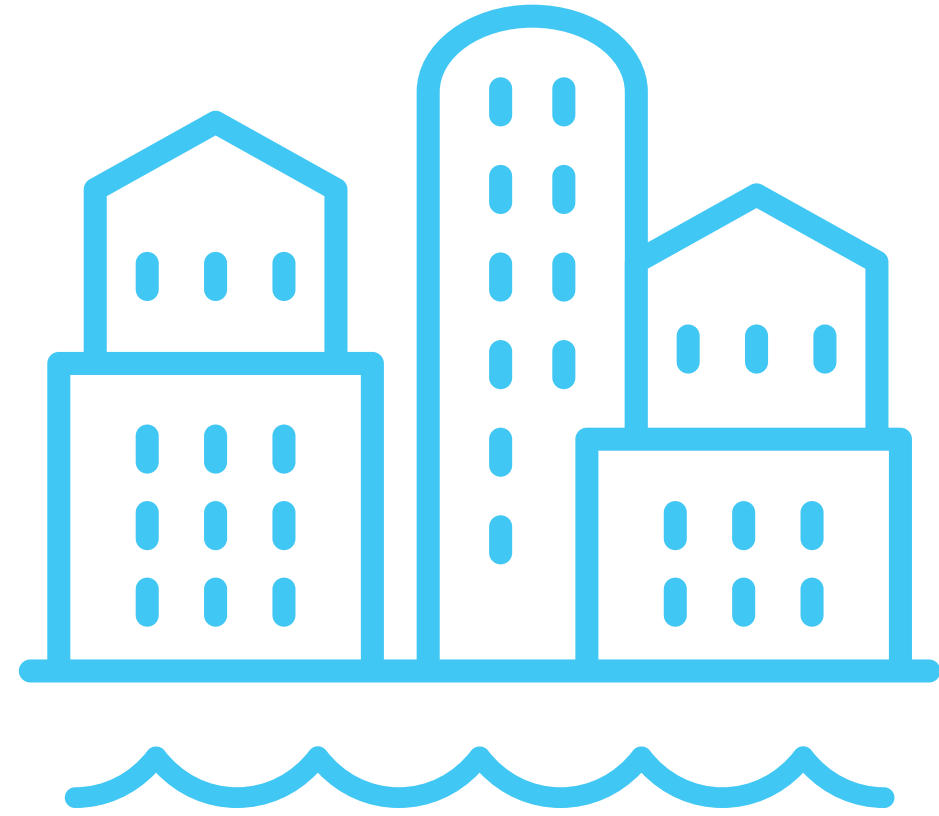


waste water

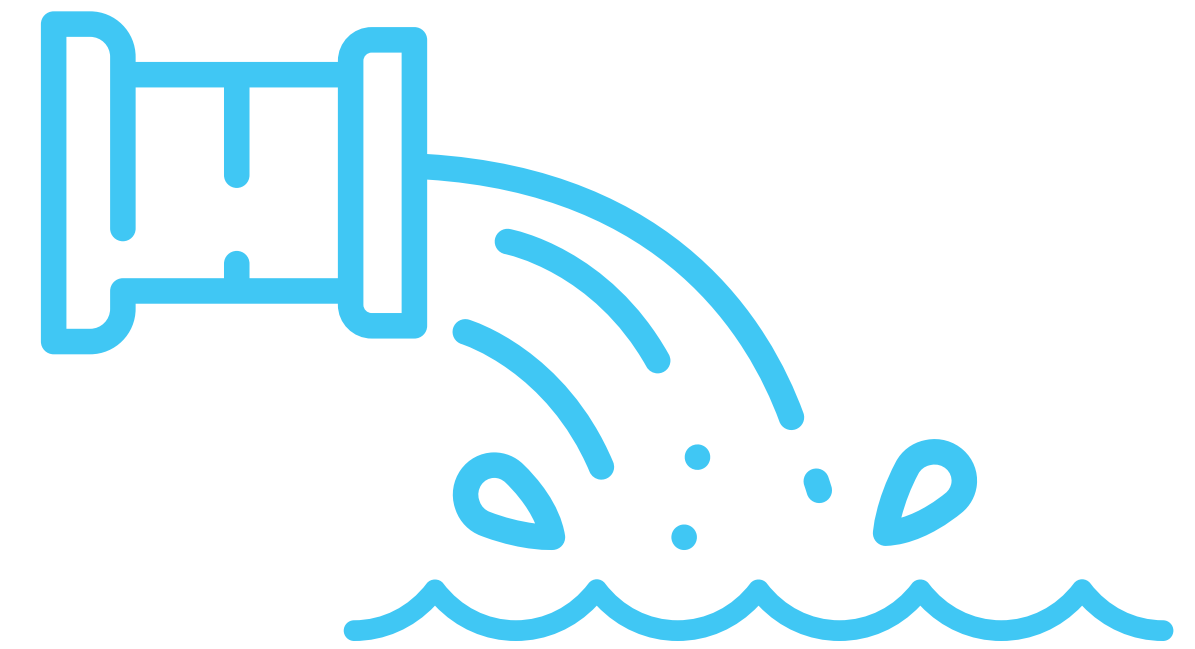
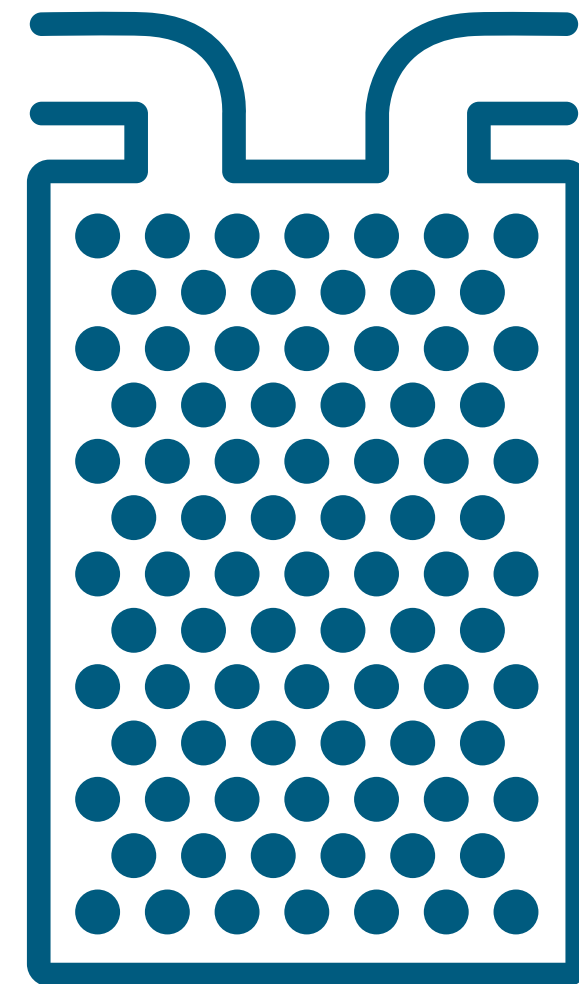


and **DP** stands for
depuration plant

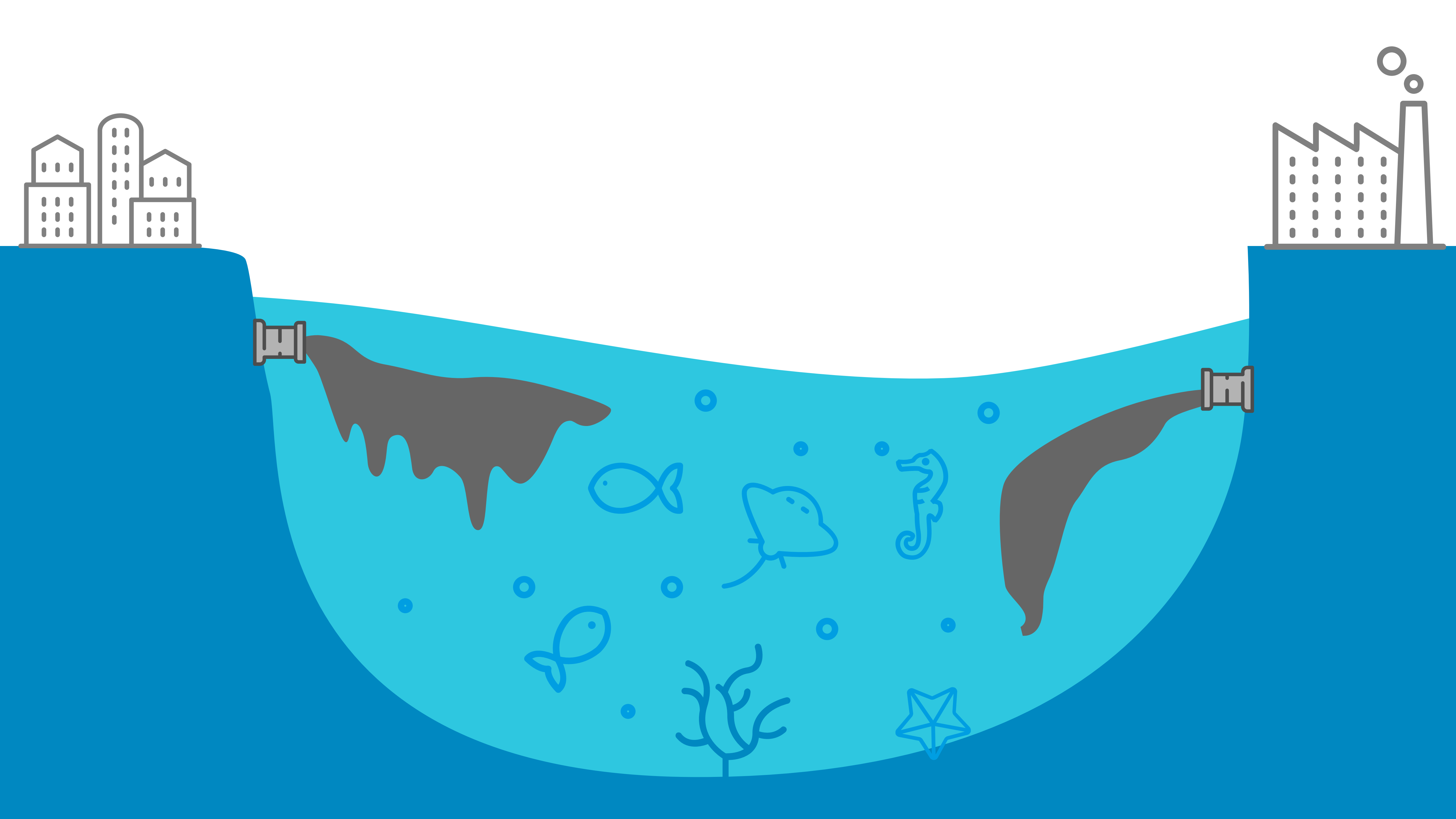
urban

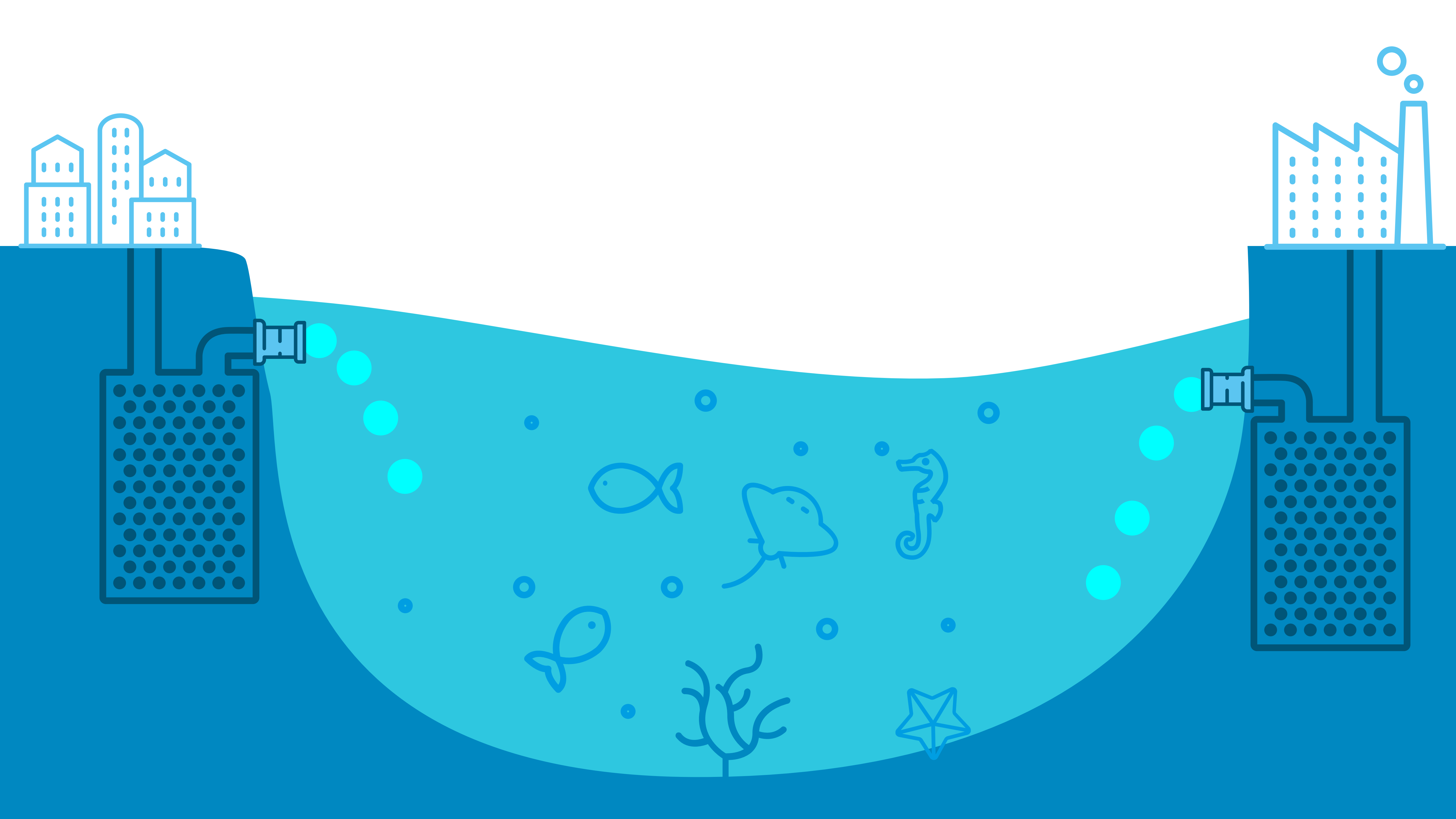


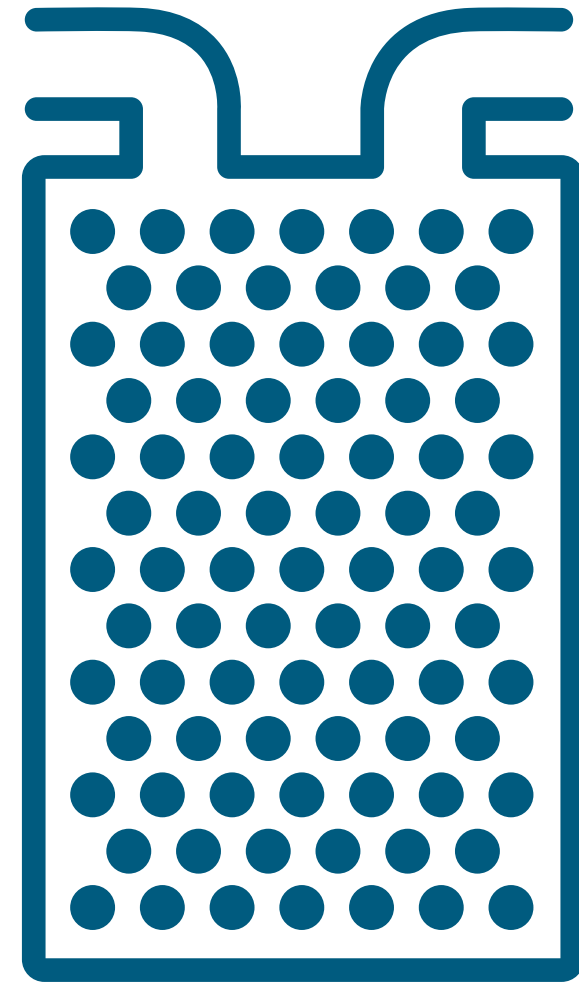
waste water



a DP is a sort of filter

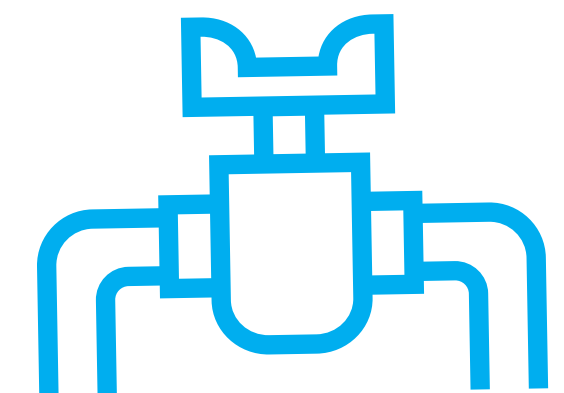




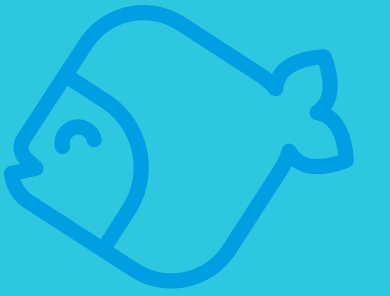
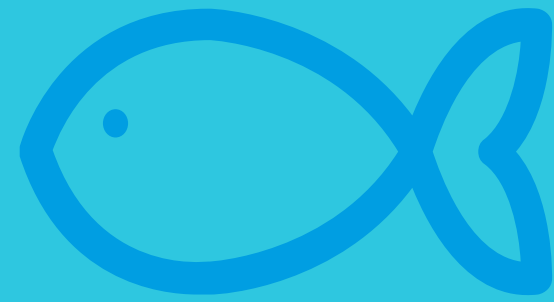


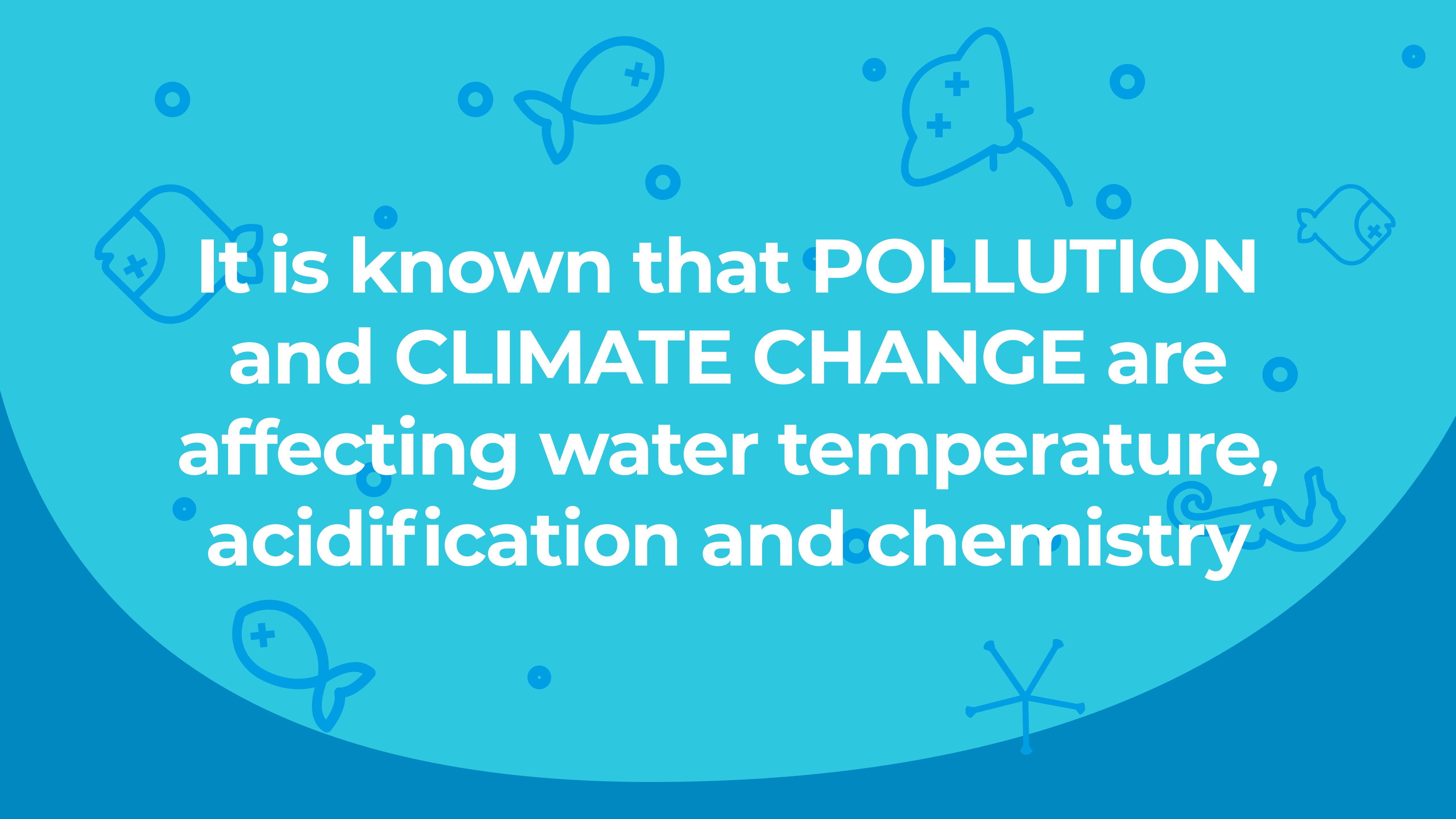
**a DP collects, screens,
filtrates and disinfects
the water**

so that you can have
GOOD WATER
for drinking, household use,
agricultural and
industrial practices

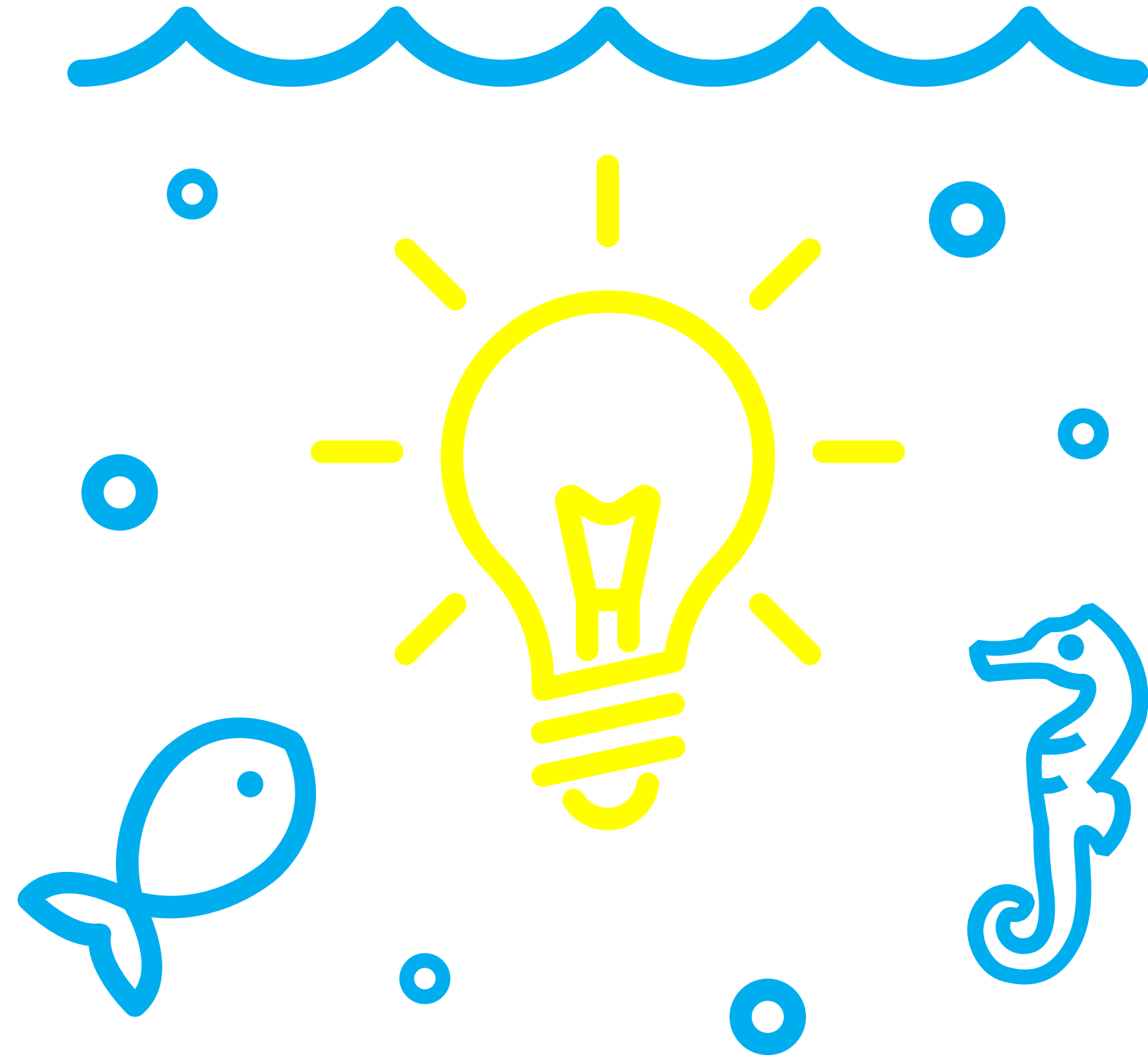


Problem is:
sea water is
CHANGING!





It is known that **POLLUTION**
and **CLIMATE CHANGE** are
affecting water temperature,
acidification and chemistry



**We think this filter
can be also used as
controlled point
of nutrients supply**

**new treatments,
new analytical devices and
new chemical and
microbiological parameters**



to improve

**the environmental quality
conditions of sea and costal area**





AdSWiM

HAVE REAL

OBJECTIVES



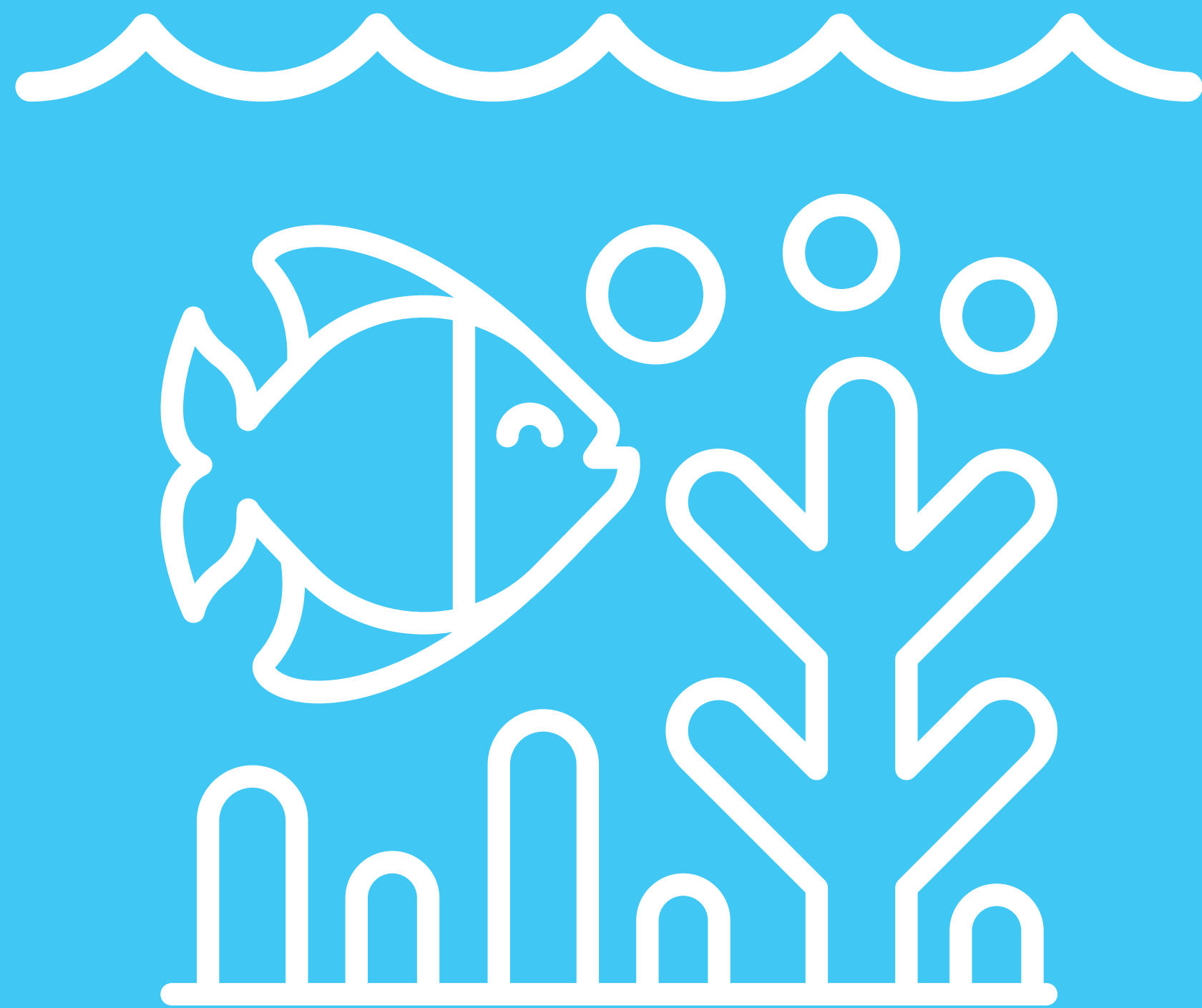
AdSWiM

SPECIFIC

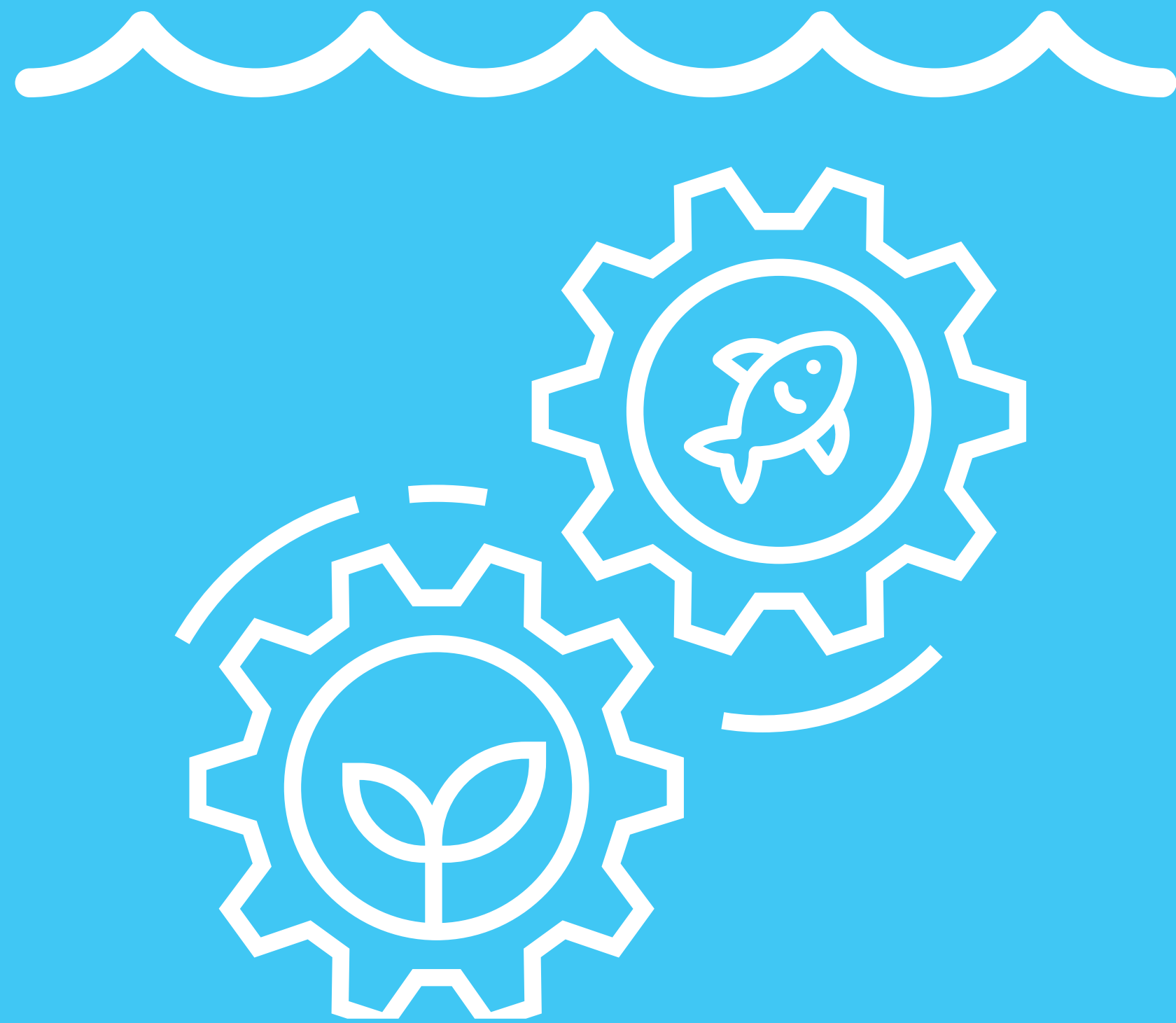
OBJECTIVES



**Sustainable and
more balanced
cross-border
territorial
development**



**Improvement of
the environmental
conditions
of the sea and
the costal areas**



**Implementation
of integrated
wastewater
managements and
shared regulations**

GOOD!



WHAT

CAN WE

DO?

GOOD!



WHAT

CAN ME

DO?

GOOD!



WHAT

CAN ~~ME~~

DO?

GOOD!



WHAT

CAN I

DO?



**Water is a precious
resource and
we must all
PLAY OUR PART!**



**While AdSWiM is working hard
with UWW and DPs,
there are**

3 THINGS

we can carry out individually



#1

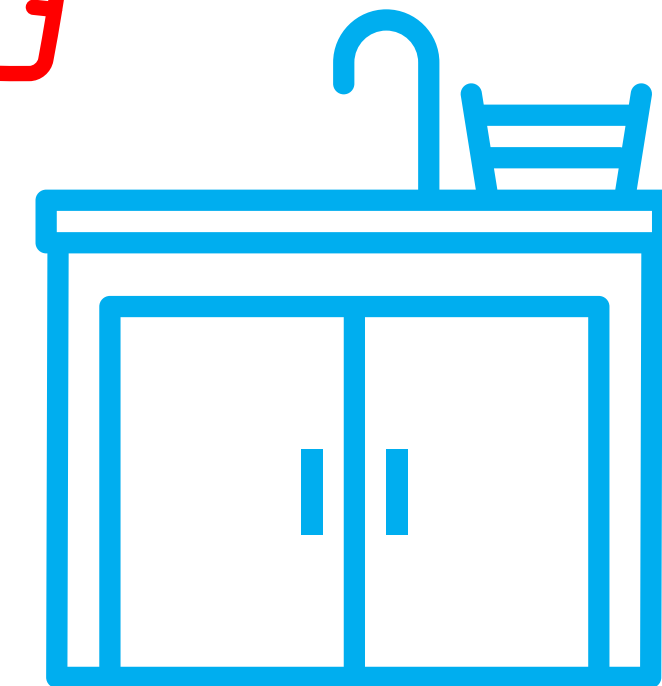
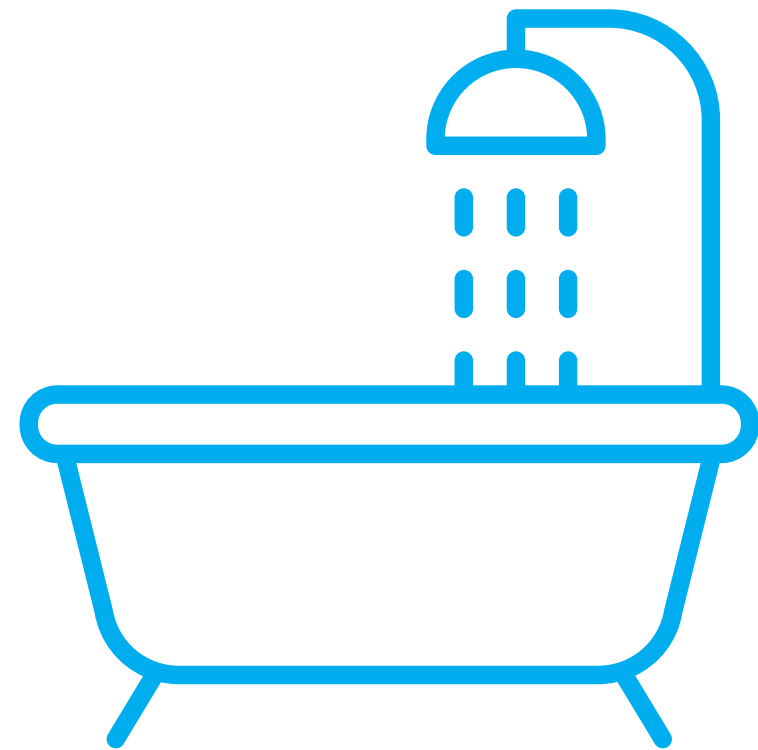
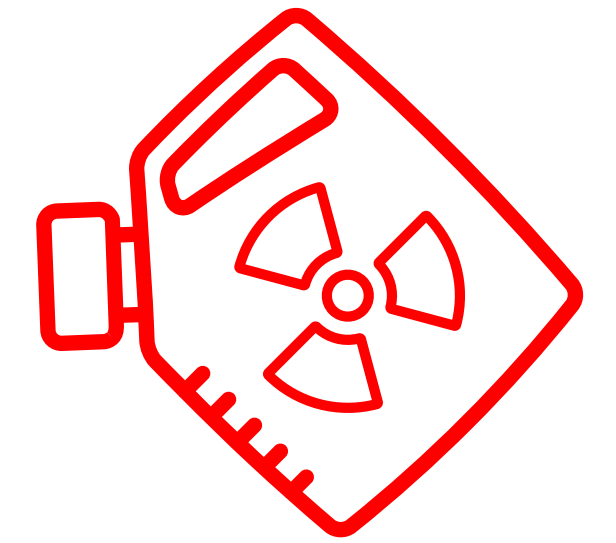
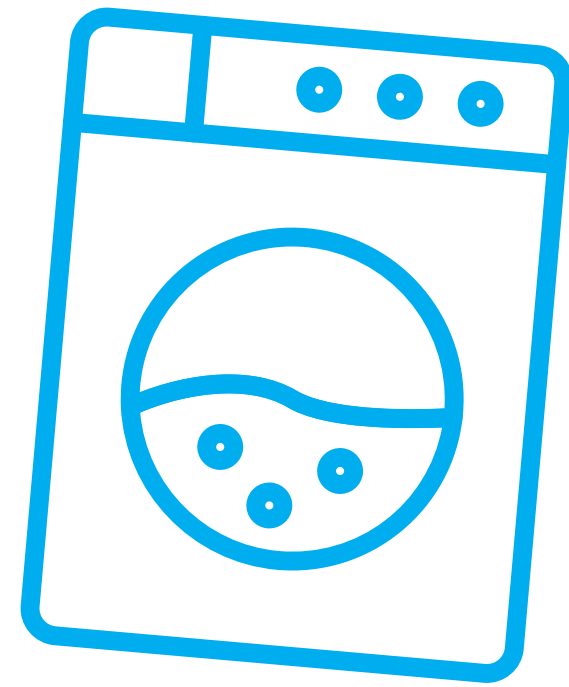


DO NOT

POLLUTE



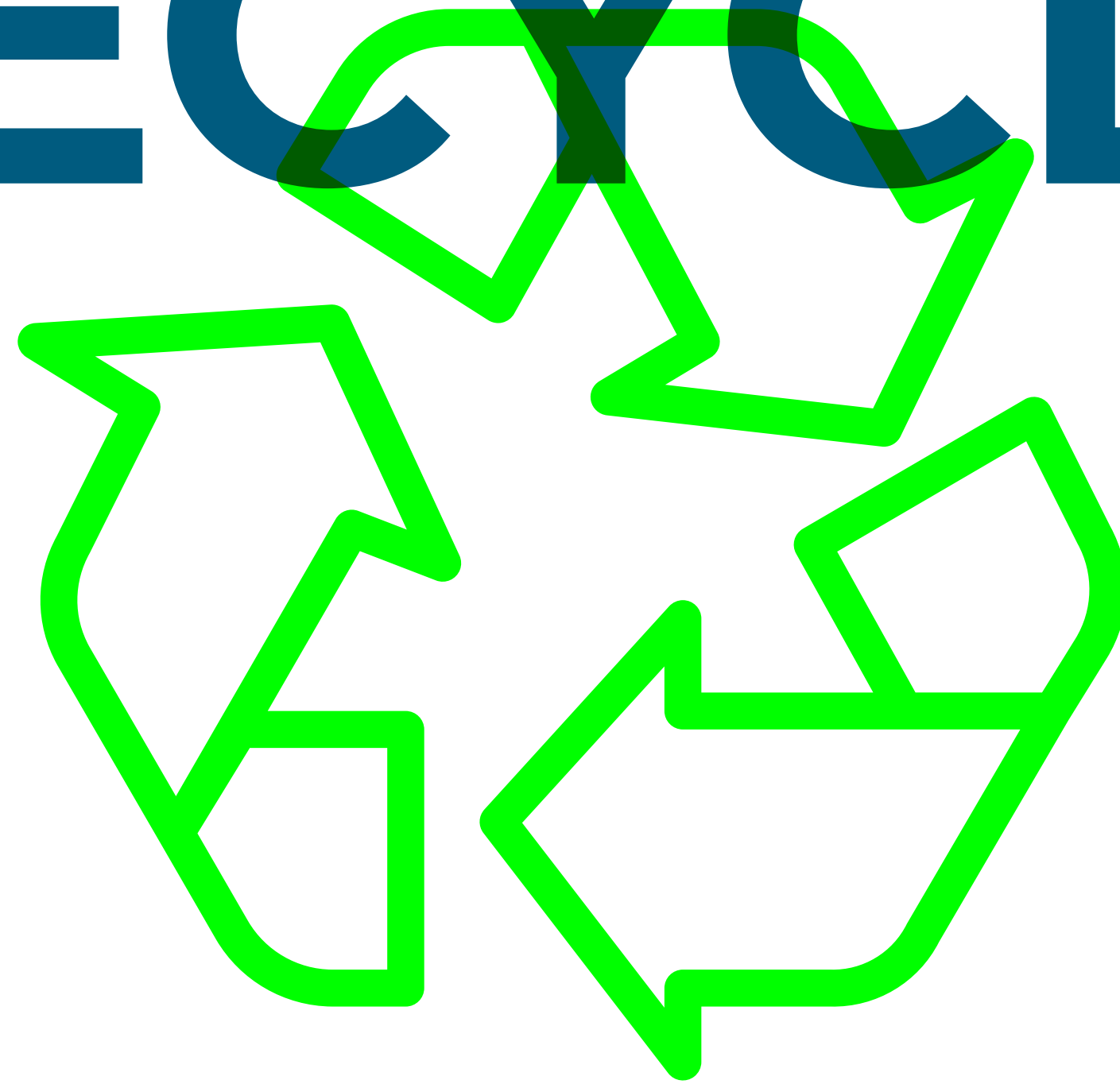
#1



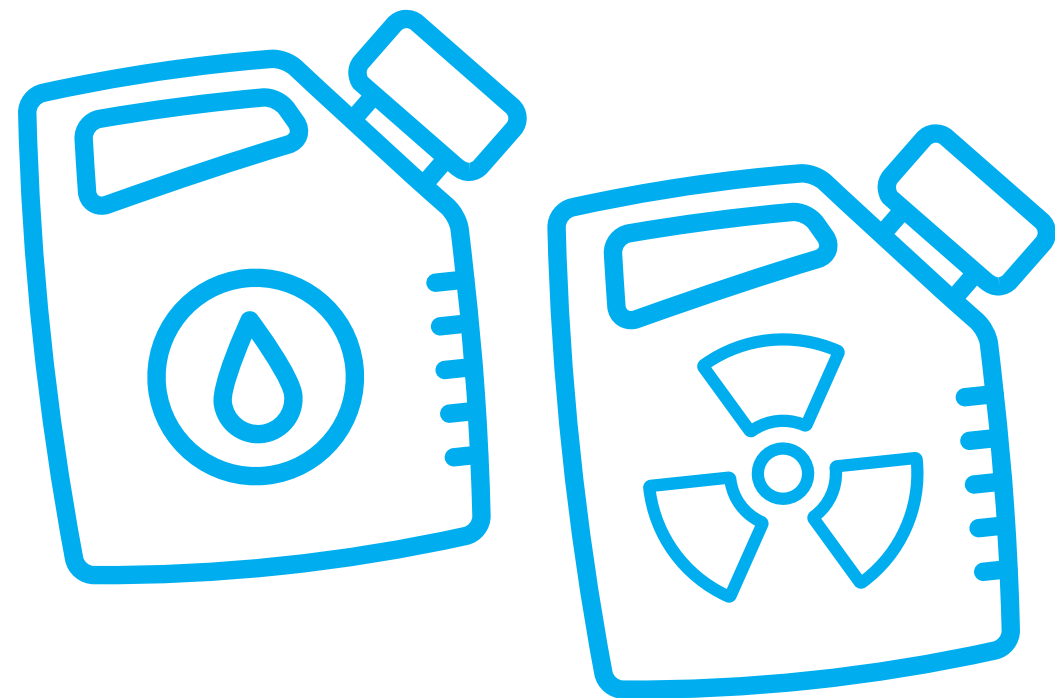
#2



RECYCLE



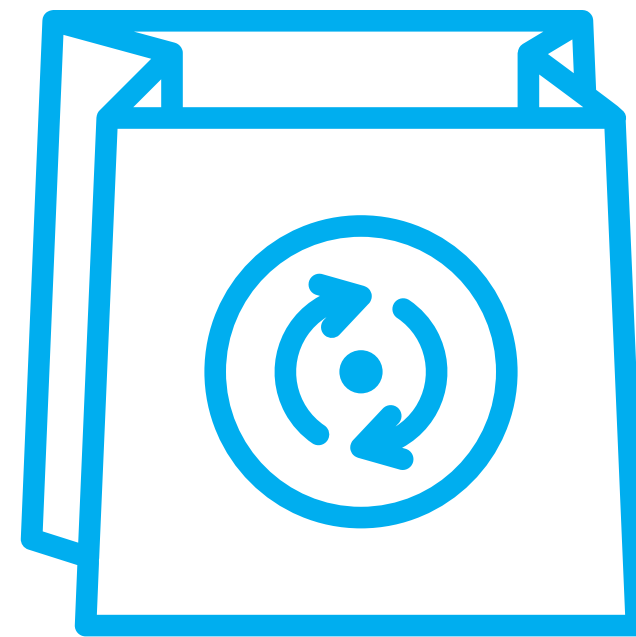
#2



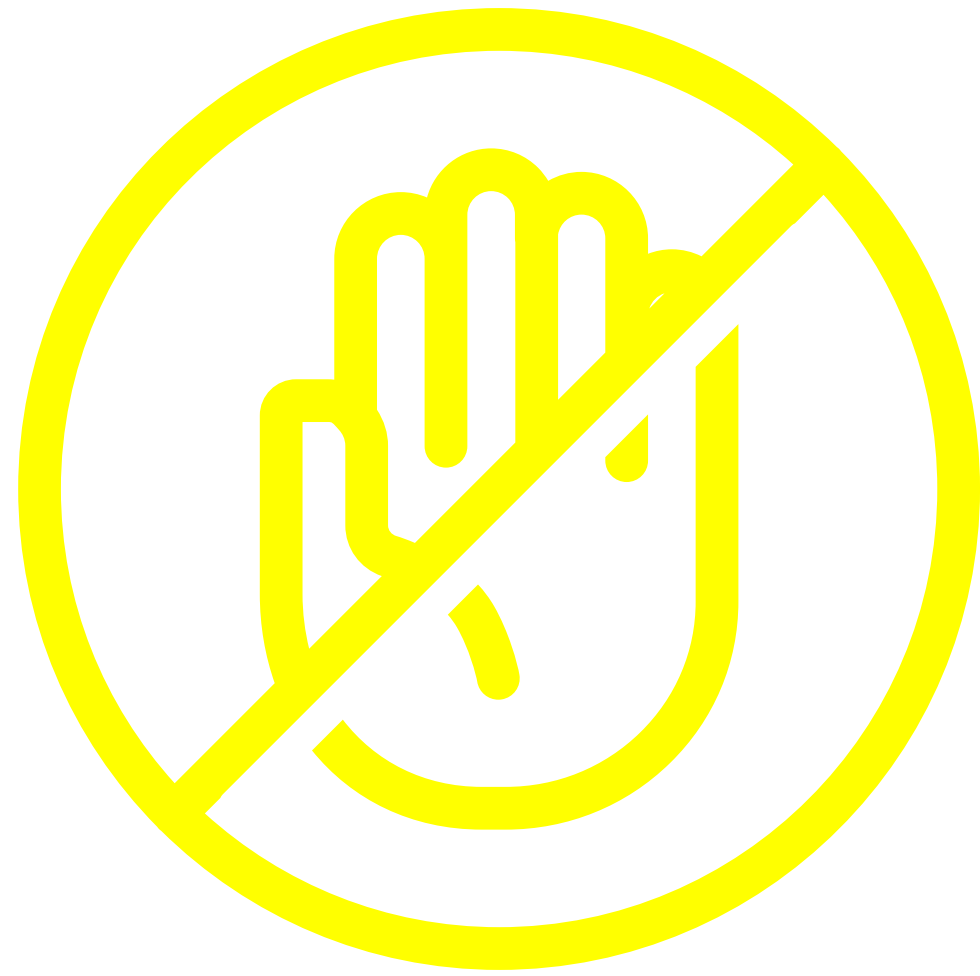
#3



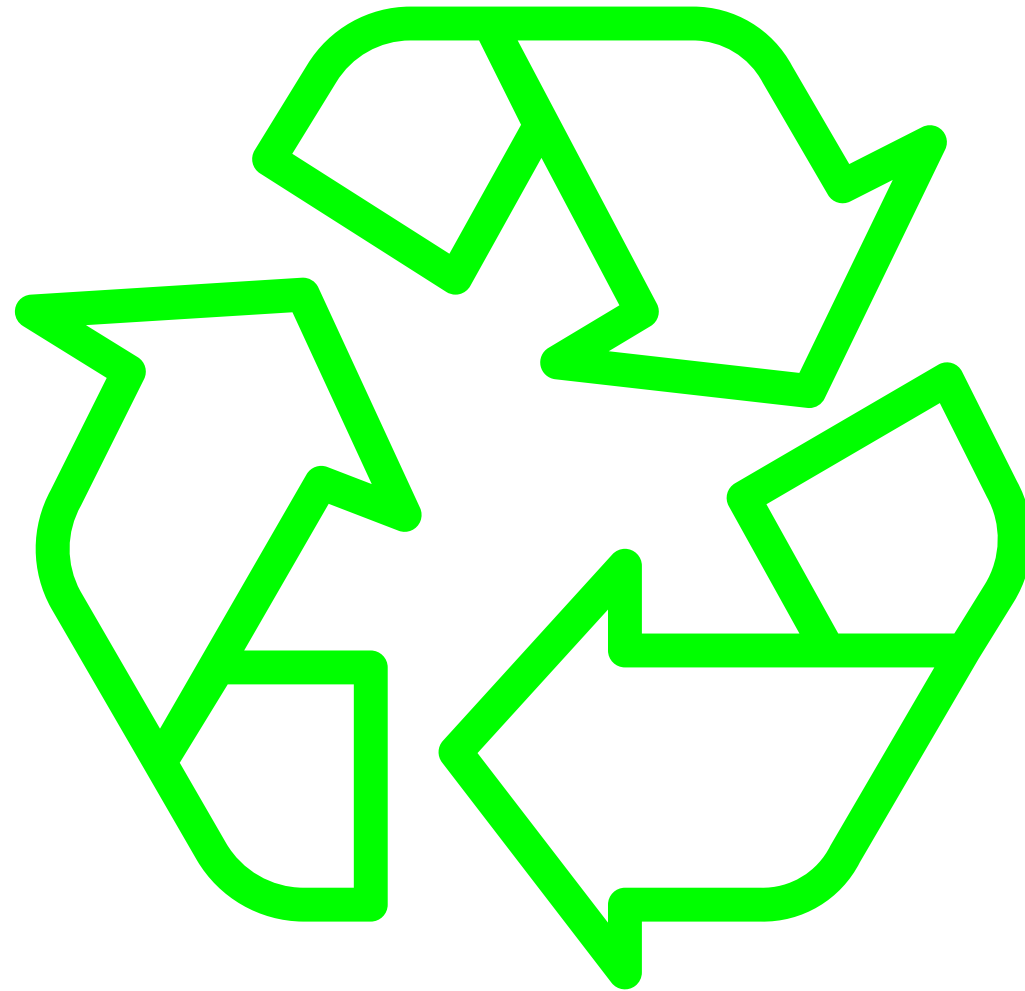
#3



#1



#2



#3





AdSwim
AND YOU,
ONE



AdSwim
AND YOU,
EVERYBODY



**THE ADRIATIC
SEA IS ONE**



**THE ADRIATIC
SEA IS ONE,
ITS CARE IS OF
EVERYBODY**

**THE ADRIATIC
SEA IS ONE.
ITS CARE IS OF
EVERYBODY.**

**THE ADRIATIC
SEA IS ONE.
ITS CARE IS OF
EVERYBODY.**



Interreg
Italy - Croatia
AdSWiM

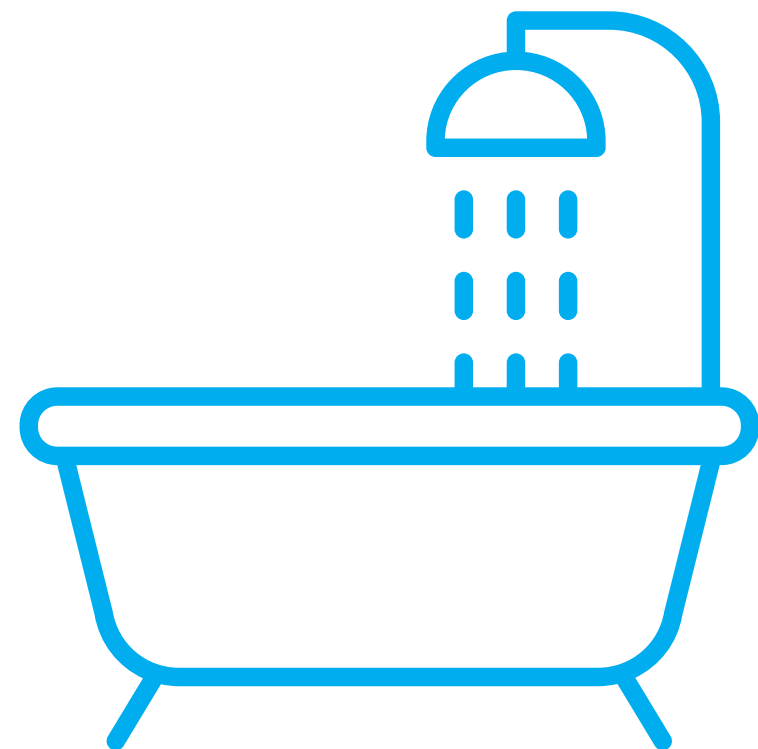
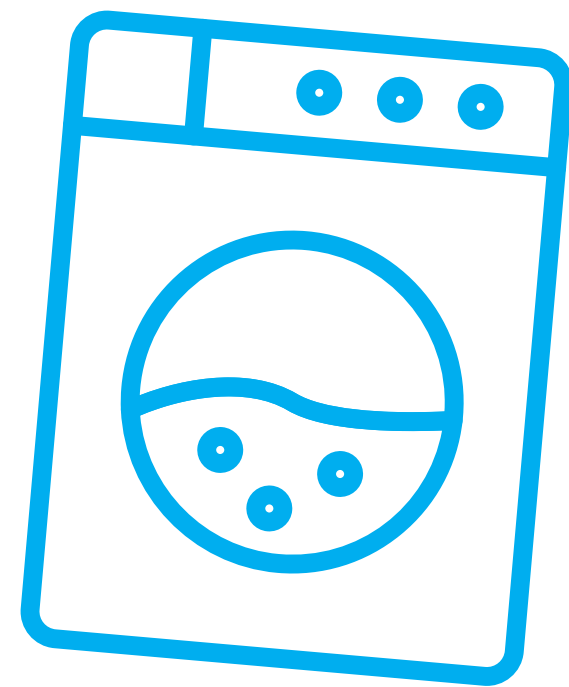


EUROPEAN UNION

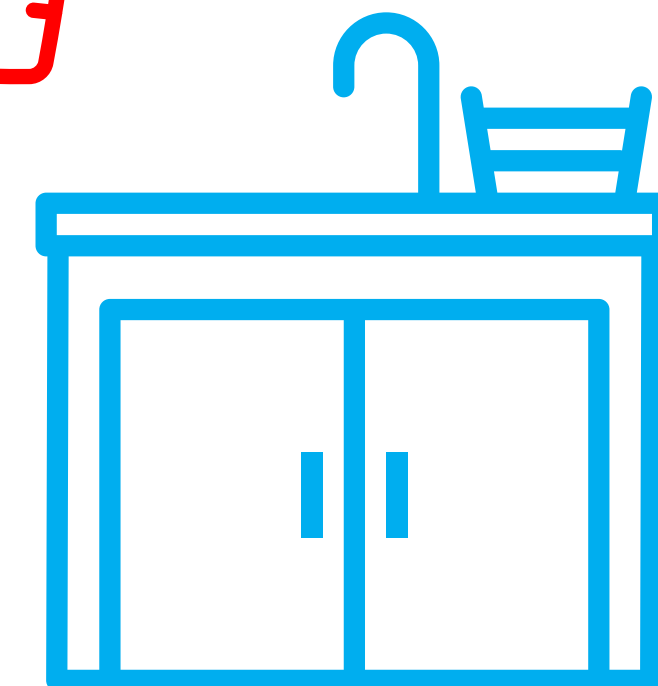
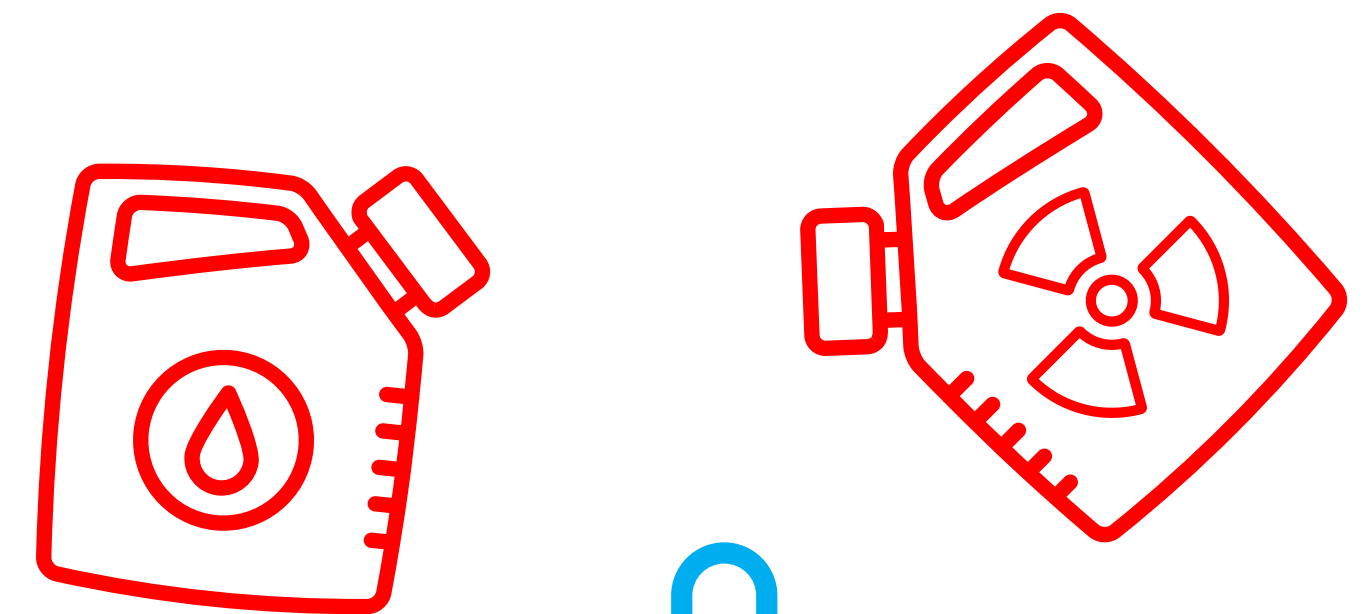
#1



Use water wisely and choose soaps and detergents with the lowest environmental impact.



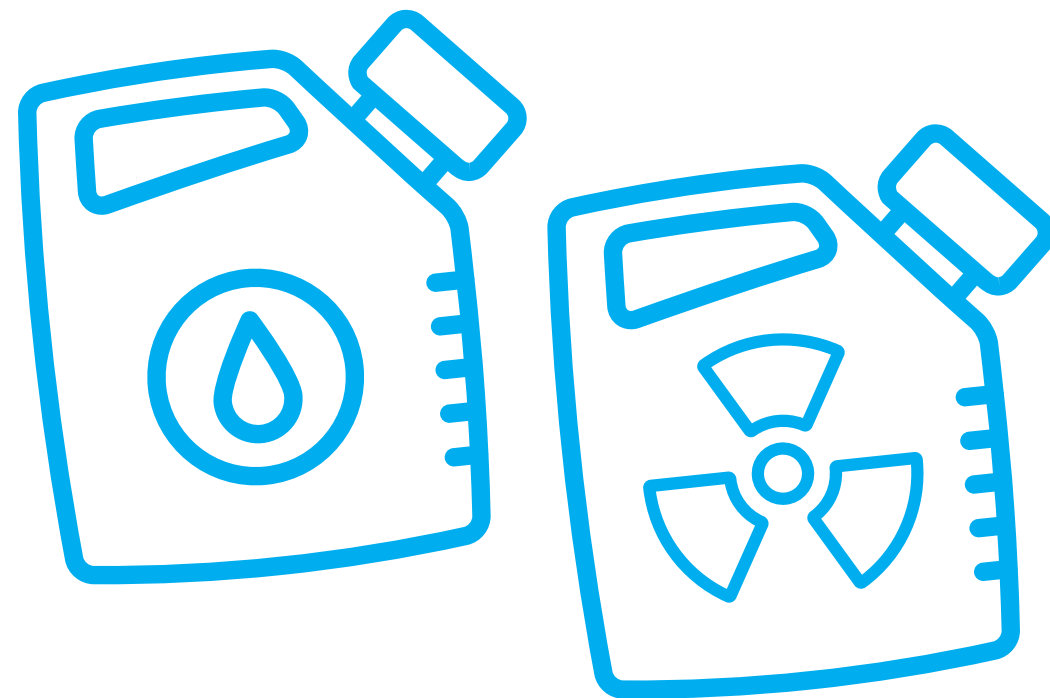
Do not throw paint, oil, medicines or plastic down your toilet drains.



#2



Take special waste in your local waste collection centre.



Quit unnecessary single-use plastic products

Check local programs for local recycling



#3



Glass containers
are the best choice!



Carry reusable bags

Use refillable bottles

