

# Cross-border pathways “The Middle Ages and the Great Centers of Spirituality”

---

Final Version of 31/12/2021

Deliverable Number D.3.2.3.



REGIONE DEL VENETO

Regione Emilia-Romagna



Project Acronym	VALUE
Project ID Number	10046694
Project Title	EnVironmental And cuLtUral hEritage development
Priority Axis	Environment and cultural heritage
Specific objective	3.1
Work Package Number	3
Work Package Title	Analysis and Governance
Activity Number	3.2
Activity Title	Development of the identity cultural paths
Partner in Charge	PP2 Regione Veneto
Partners involved	
Status	Final
Distribution	Public

## Index

Closing of data mapping and realization of the three routes.....	3
Final phase and conclusions .....	4

## Closing of data mapping and realization of the three routes

**Mapping of cultural heritage and natural assets, traditional knowledge, cultural activities, facilities and services (CHIMERA – Gabucci)**



## Final phase and conclusions

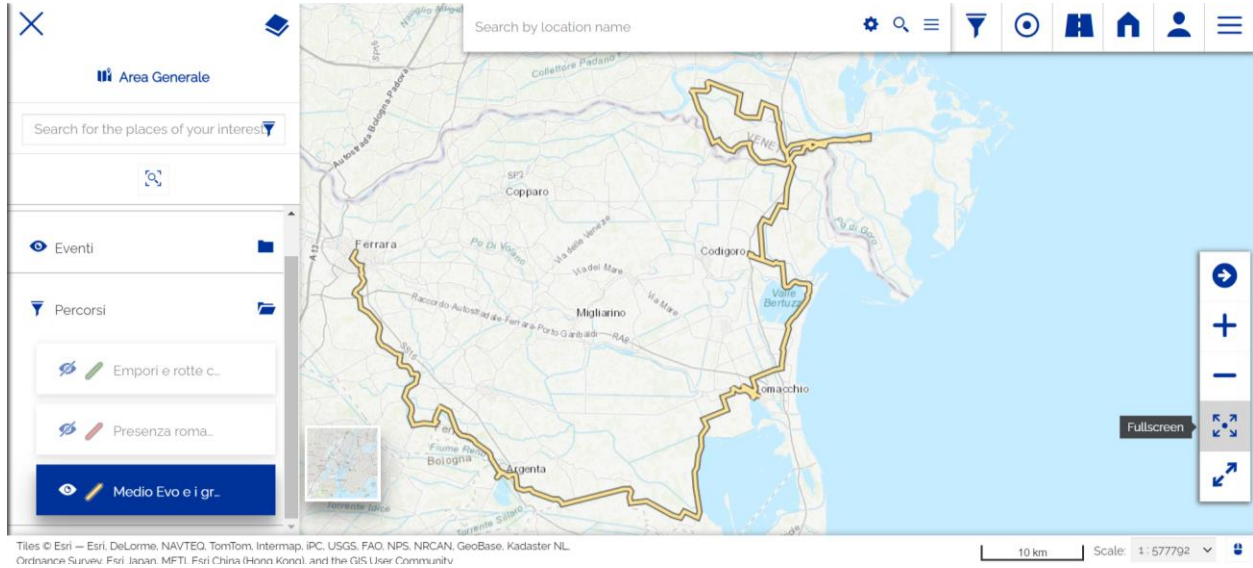
POIS. The final phase of the work led to the transfer of the 330 points included in the mapping, which include archaeological, architectural and landscape assets, museums and various exhibition venues and tourist information points (IAT and Pro Loco), to the new dedicated DIOMEDE platform (<https://diomede.parcodeltapo.org/value>). Attached to this report is a compressed file (shape\_POI\_diomede.zip) with the overall shapefiles of the POI mapping divided into the 4 main categories, extracted from the platform. In order to select data of the main points of interest in Veneto (about 80) it is necessary to apply the following filter: SOURCE = 1 AND POI = 2. It will be possible at any time to modify the selection on the platform by making POIs now hidden visible or by obscuring visible POIs.

Starting from the data in the mapping sheets, for all main POIs the appropriate descriptive field was filled in directly on the DIOMEDE platform, for which an English translation was also provided. For almost all attractors a representative image was included. In the attachment RIGHTS\_IMAGES.pdf you will find the list of all illustrations and the reference to the management of rights of use.

Information on all other assets included in the map, more details for the main POIs and links to the catalogue records of the Veneto Region and the Central Institute for Catalogue and Documentation remain available on the DIOMEDE platform back end.

**Routes.** As envisaged by the project, three routes were identified that, while maintaining the specificity required by the theme, also enhance different assets along the identified lines.

*Middle Ages and the great centres of spirituality.* The itinerary is entirely between the Po della Pila and the Po di Goro, and has as its central element the church of San Basilio, but revolves much around the traces of land reclamation activities and more generally of industrial archaeology (e.g. the Ca' Tiepolo sugar refinery). A very important stop is the Museo Regionale della Bonifica at Ca' Vendramin, which can be reached by an embankment cycle path from San Basilio.



Tiles © Esri — Esri, DeLorme, NAVTEQ, TomTom, Intermap, iPC, USGS, FAO, NPS, NRCAN, GeoBase, Kadaster NL, Ordnance Survey, Esri, Japan, MFTI, Esri China (Hong Kong), and the GIS User Community