

D 4.3.1 IMPLEMENTATION OF PILOT ACTIONS (TYPE 2)

Resnik/Siculi, Kastela, Split

County2021

Pilot Project in Resnik, Kaštela, Split County

Excavation and training activities of the pilot project were carried out in the locality of **Resnik, ancient Siculi**, during September 2021 (fig. 1). The research was directed by the University of Zadar, with the participation of the team of Museum of Kaštela; other archaeologists, archaeology students and about twenty members of the Giričić, Rostrum and Spinut diving clubs also collaborated.



Fig. 1: Resnik/Siculi. Aerial view of the site

Before the start of the campaign, the Tripodij company performed an instrumental survey of the submerged area with multibeam sonar and sub bottom profiler, adopting fully shared methodologies. On the basis of that geodetic survey, the excavation areas were identified. The oldest and least known part of the site is a Neolithic settlement, located at the mouth of the Resnikstream, at a depth of about 3 m (fig. 2), where wells obliterated by a fire, filled with stones and other materials, were recovered; above all, ceramic fragments from the ancient Neolithic, lithic artefacts

and animal bones were found. Research confirms the presence of a Neolithic settlement in this area, which has been indicated by previous findings.

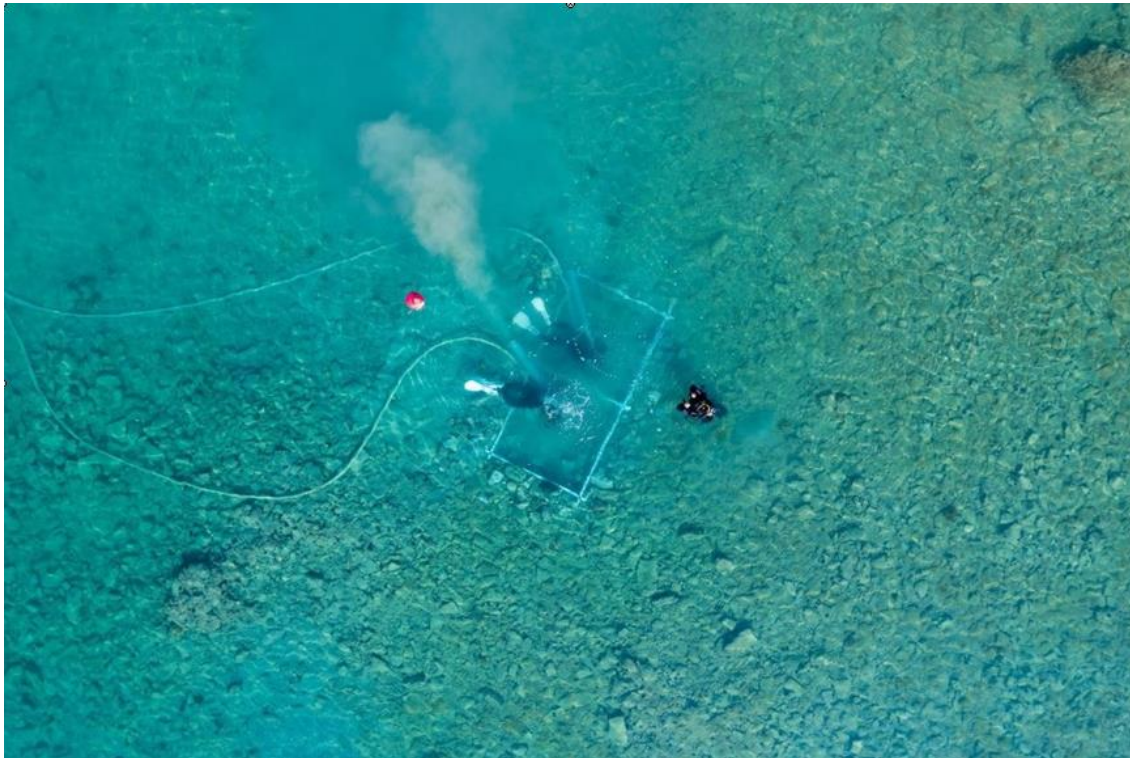


Fig.2: Resnik/Siculi. Underwater excavation of the Neolithic settlement

The other area subject to research is that of the late Hellenistic settlement, which shows a presence from the second to the first century B.C. (Babin 2011; Kamenjarin 2016). The remains of the foundations of the western and southern walls, of one of the roads (also preserved in Roman times) for a length of 10 m, and of 30 wooden poles have been identified. The identification of the wall layout in this area will make it possible to specify the extension and function of the settlement, which was destroyed in the second half of the 1st century B.C., also for its virtual reconstruction; data on the position and shape of the port to the east are known from previous excavations.

The third area coincides with the Roman port. Although the structures are clearly legible in aerial photos, it has never been investigated. This sector has returned most of the materials, datable between the 2nd and 5th centuries A.D. (fig. 2).

The results of the research allowed the implementation of an exhaustive tool of knowledge and enjoyment: an immersive AR experience to be used with Oculus or semi-immersive, displayed on monitor, which tells of the evolution of the seascape and the settlement from Neolithic to the Roman Age.



Fig. 3: Resnik/Siculi. Excavation of the Roman harbour.

The research activity was then followed by the reproduction by photos and the 3D mapping of the site of Resnik/Siculi, including the material found in previous excavations stored in the Kastela museum, to form an immersive permanent educational exhibition centre.

This has been done during the Winter 2021 months. The results can be seen at the following YouTube links, representing the VR reconstruction of the site in the different historical periods (Neolithic, Roman, Hellenic). Videos have been produced in Italian, Croatian and English.

Neolithic ENG

<https://youtu.be/ufJ2SUwbD3c>

Neolithic HR

<https://youtu.be/6yzSstqpVZ4>

Neolithic IT

<https://youtu.be/uYImnh1EQaA>

Roman ENG

<https://youtu.be/86X9s1YaqHs>

Roman HR

https://youtu.be/nUEc- J_3f8

Roman IT

<https://youtu.be/XbSD0yJsRtU>

Hellenism ENG

<https://youtu.be/h5laScpb9yA>

Hellenism HR

<https://youtu.be/O5SM5QEzDQc>

Hellenism IT

<https://youtu.be/BR-q-v8Xjl8>

With the occasion, in Spring 2022 the results were presented in Kastela museum, also with the use of totems.

Kaštela Museum photos





