

THE PO DELTA



**BARRIER-FREE
ROUTES**

Table of contents

3	Introduction
4	How to use this guide
5	The Po Delta
6	How to discover the Po Delta
9	NATURAL RESERVE BOSCO DELLA MESOLA
13	Cycling through history
14	Castle of Mesola
16	Ecomuseo del Cervo e del Bosco della Mesola
18	Pomposa Abbey
20	Useful information
21	VISITOR CENTRE CUBO MAGICO BEVANELLA
25	Cycling in the pinewood
26	Basilica of Sant'Apollinare in Classe
28	Classis
30	Museo Natura
32	Useful information
33	NATURAL PARK OF CERVIA
37	Cycling between the port and the saltworks
38	Casa delle Farfalle
40	MUSA, Museo del Sale di Cervia
42	Saltworks of Cervia
44	Useful information
45	The flavours of the Delta
49	The golden beaches
51	The Po Delta App Accessible tourism
52	Tourism4all
53	Aids bought to enhance accessibility
54	Credits



Introduction

The interventions put in place within the TOURISM4ALL project by GAL DELTA 2000, which has always carefully paid attention listened to the needs of the territory, want to represent the beginning of a path that intends to respond to the different needs of accessibility and, at the same time, to create a new opportunity and vision for the development of the territory, actively contributing to promote the tourist accessibility of the Delta Park.

Accessible tourism means to prioritise in every project the specific needs and requirements of each person, promoting accessibility by overcoming natural barriers, and going beyond the specific concept of eliminating architectural barriers. It represents an important step to make the natural and environmental heritage of the Emilia-Romagna Delta area accessible and to allow everyone the possibility to enjoy the existing environmental resources in an active and inclusive way.

Starting from the principles of inclusiveness, accessibility, quality and competitiveness, through an integrated and joint action and tangible interventions, the territory of the Emilia-Romagna Delta wants to contribute in terms of real Accessible Hospitality, with the promotion of existing realities and the development of new initiatives aimed at strengthening the policies for accessible hospitality and fruition services.

The President of DELTA 2000
Lorenzo Marchesini

How to use this guide

Imagining **the cities of the future as inclusive and sustainable**, while ensuring a high quality of life for their residents and tourists?

This was the idea that made it possible to continue the process begun in 2019, involving the economic operators of the territories, in order to develop an **inclusive tourism system** that enhances the existing system and allows it to improve over time.

This Guide wants to be a different way to describe the Po Delta Territory, where tourist information is mixed with more specific and useful indications for everybody. We have personally visited all the structures and the proposed routes, in order to guarantee an accurate explanation of the actual characteristics of accessibility. This information will also be useful to many other people who are not used to looking for, and finding, such timely information and will be surprised to say "good to know!".

Symbols explanation



Steps



Ramp



Lift/Lifting platform



Touchable artworks



Manual wheelchair



Electric wheelchair



Wheelchair motor



Equipped toilet

The Po Delta

The Po Delta is a fascinating area between land and water at the mouth of Italy's longest river. This wide plain is a fertile "**Biosphere Reserve**" protected by Unesco, an important Italian natural heritage rich in biodiversity located between Emilia Romagna and Veneto.

Land, lagoon, river and sea come together, creating evocative scenarios and offering beautiful emotions to all their visitors. A destination to explore because it allows you to get to know many different facets of a territory: nature, art, culture, history and the sea. A millenary history of union between man and nature, constantly evolving: the Po River on one side and the human intervention on the other, have contributed over the centuries to the formation of a vast area that goes from Chioggia to the saltworks of Cervia, from the land to the sea.

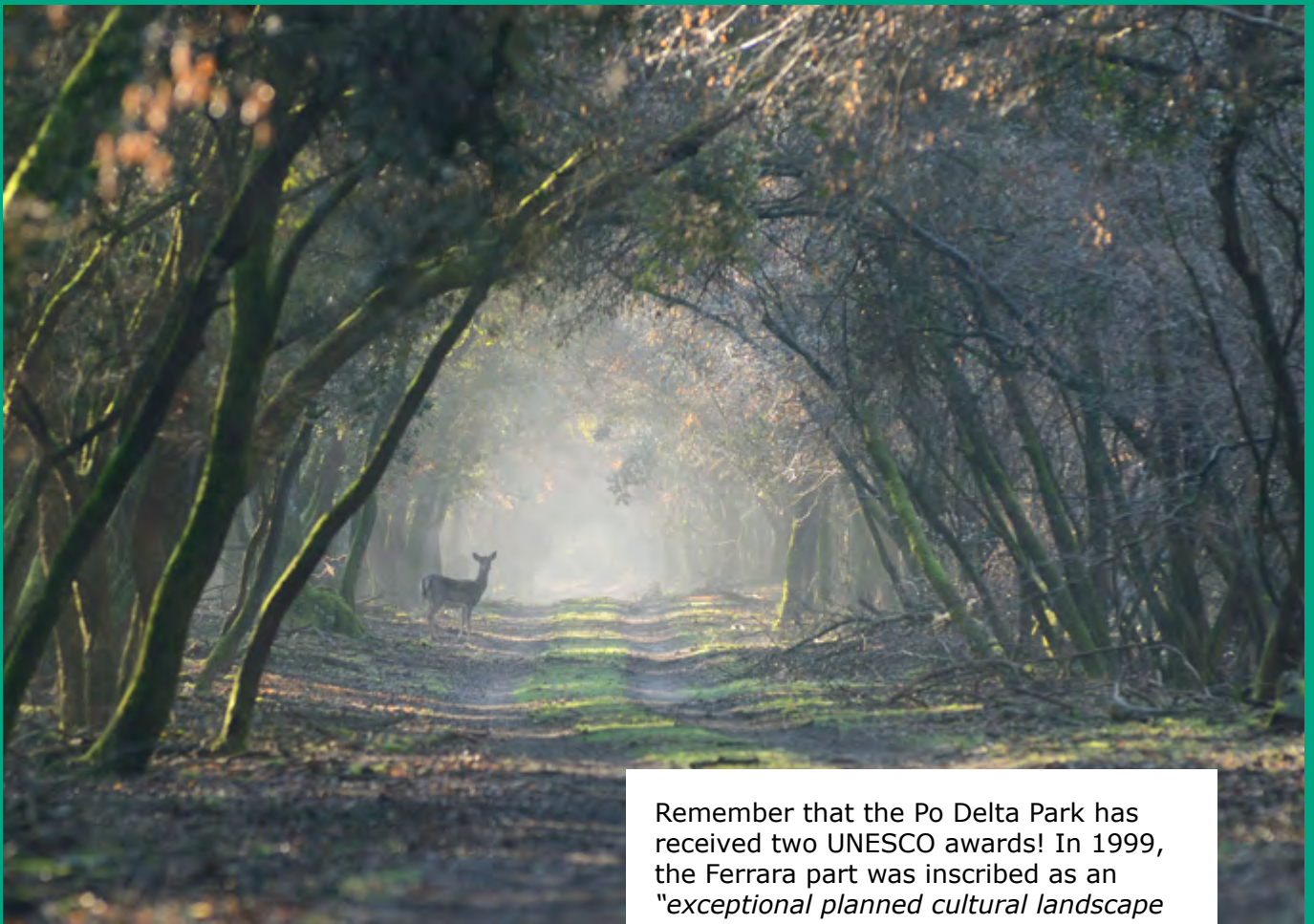
The adventure of the Po Delta Park began in 1996, with the aim of highlighting lagoons, saltworks, ponds and valleys, flooded woods, the typical woods of the Po Valley, and centuries-old pinewoods planted by Benedictine monks: natural and sometimes artificial environments, sometimes different from each other, but which have contributed to the maximum development of the biodiversity of hundreds of species, both animal and vegetable. In these places, tranquillity is the reigning sovereign; the river banks, which protect the *casoni* (old fishermen's houses) from the overflowing river, points from which to admire the perfect environment, the soft lights of the sunsets that make their way through the reeds and a silence so profound it deserves to be listened to. Not only nature but also manmade artworks of extraordinary beauty, such as the Basilica of Classe with its mosaics or Pomposa Abbey, the Castle of Mesola, unaltered by time and the very suggestive historical centres.

Find all the information
and offers to visit the Po
Delta [here](#)

How to discover the Po Delta

There are many ways to discover the Po Delta and wonderful places can be explored by land and water.

There are many ways to visit the area: horse riding, cycling or walking, to admire the many species of fish and birds, listen to the rustle of the reeds or enjoy the silence we are often not used to. For bicycle and handbike lovers, the Po Delta Park offers the possibility of organising beautiful excursions on two wheels, along cycle-pedestrian routes of different lengths to meet everyone's needs.



Remember that the Po Delta Park has received two UNESCO awards! In 1999, the Ferrara part was inscribed as an *"exceptional planned cultural landscape that commendably preserves its original form"*.

Those who choose to discover the Po Delta Park by water (certainly the most adventurous and exciting way for children) can opt for an excursion by boat through the canals and reeds of the Park, accompanied by expert guides who know the area well and describe its richness with an engaging and interesting story for an audience of all ages.

The environmental and natural heritage of a territory must be a resource accessible to everyone. For this reason, some sites and visitor centres of the Po Delta Park of particular importance have been identified to be strengthened in order to favour visits and excursions also for people with accessibility needs and who require specific information to organise their visit with greater tranquillity: **the Natural Reserve Bosco della Mesola, the Visitor Centre Cubo Magico Bevanella in Ravenna and the Natural Park of Cervia.**

In 2015, the Po Delta was included, in its entirety, among the UNESCO Biosphere Reserves MaB, since the areas of land, coastal and marine ecosystems, through a correct land management, are combined with the valorisation of the ecosystem and its biodiversity with sustainable development strategies.







NATURAL RESERVE BOSCO DELLA MESOLA

01





DID YOU KNOW?

In the post-war period there were only about ten deer, whereas today there are about 300, living in harmony with the land among 400 different species of plants.

The Riserva del Bosco della Mesola covers a surface of 1,058 hectares and is considered one of the few best preserved lowland forests that are a reminder of the ancient forests that populated the Adriatic coast.

The tour consists of three loop routes with different lengths:

Route	Length	Average time
Red	4 km	2 h 30 min
Green	2,5 km	1 h 45 min
Yellow	2 km	1 h 15 min

Alternatively, you can take organised guided tours to enter the restricted areas: an adventure in search of deer and fallow deer. Along the way we stop at the Parco delle Duchesse, where the Este family used to organise chivalrous tournaments, and at the "Casino del Vigneto", a small visitor centre with a photographic exhibition dedicated to the protagonist of the forest: the Dune Deer.

Entrance costs a symbolic 1 euro and you can choose to go on foot or by bicycle.

Via dei Frassini, 24 - 44026 Mesola (FE)

INFORMAZIONI DELTA 2000

tel +39 0533 57693

info@deltaduemila.net



Information about accessibility

To reach the Riserva del Bosco della Mesola you will feel as if you are travelling along roads far from everything, quiet and with little traffic: just the ideal setting for those seeking peace in Nature. The free car park does not have any parking spaces reserved for European Disabled Persons Identification Card holders and the pavement is slightly uneven.

To reach the main entrance it is necessary to walk for about 50 metres on a protected concrete path with a few bumps caused by tree roots. Along this route there is a bike rental, a bookshop and an info-point where it is possible to book excursions in the reserved area, which can only be visited with a guide. There are also toilets here, including a fully equipped one.

At the entrance to the Reserve, in the small reception area, you can ask the helpful staff for information. Depending on the amount of time you have

available, you can decide which of the 3 routes to take.

They all have a fairly compact pavement, although part of the red one crosses a stretch of sand. On each route you will find information signs pointing the way with explanations of what you are visiting, as well as picnic spots for stopping and resting.

To allow visits to families with small children or those with cognitive and/or sensory disabilities, the centre is equipped with inclusive OL3Bike tandems, CargoBike and also an electric Buggy to guarantee full autonomy also to the visitors with motor disabilities. (Important: the Buggy requires a good trunk control). The rest area at the entrance has been equipped with picnic tables to allow easy access for wheelchair users.





ROUTE INFORMATION

Difficulty level	medium
Length	41 km (out and back)
Route	asphalt, compact gravel, mixed
Recommended for	everyone
Comments on accessibility	in some sections mixed with low traffic intensity



Cycling through history

A loop route starting from the Riserva del Bosco della Mesola, to reach the Castle of Mesola with its Museum, Pomposa Abbey and back. A route to discover the origins of the delta territory, its formation and reclamation by man.

1st PART

from the Reserve Bosco della Mesola to the Castle and Museum of Mesola

Departure from the car park for visitors of the Riserva del Bosco della Mesola. We ride along via Frassini to the end, then take the protected cycle path on the left alongside the provincial road to the junction with via Belmonte, which we follow until the Natural Oasis of Torre Abate. Past the Canale Bianco we go left to climb up the riverbank until we reach Via Dossone Sud and then turn left again onto the protected cycle path of Via Biverare; we cross the subway of the Romea state road and we arrive at the Castle.



2nd PART

from the Castle and Museum of Mesola to Pomposa Abbey

We leave the castle in the direction of the Romea state road and, having passed the subway, we return to the route taken up until the junction with the provincial road behind the town of Mesola. We continue to the centre of the town and at the roundabout we follow Via I Maggio and Via del Mare and then keep to the left until the crossroads with Via Lovara, at the end of which we turn right and then left to continue along Via Strane. At the crossroads with Via Giralda we turn right and continue until we reach Pomposa Abbey.

3rd PART

from Pomposa Abbey to the Reserve Bosco della Mesola

We exit in the direction of Valle Giralda and continue to the end of Via Giralda Centrale, turning left in the direction of the Reserve as far as Località Carpani where we turn right to take Via Gigliola until the visitors' car park of the Riserva del Bosco della Mesola.

ACCESSIBLE WITH

- Bike
- Handbike
- CargoBike
- Tandem
- Power-assisted bike



Castle of Mesola

02

The Castle of Mesola stands in the main square of Mesola. With its four imposing turrets, it is a combination of fortress and luxury residence, just what the Duke of Ferrara Alfonso II d'Este wanted to leave a lasting mark in the area.

In the past, 12 miles of walls started from here and surrounded the Tenuta of Mesola, which also included the wood where the Duke enjoyed hunting with the entire Estense Court.

The castle is part of the circuit

dedicated to the Delizie Estensi, the residences built by the d'Este family in Ferrara and its province.

In 1999, UNESCO awarded the Delizie **World Heritage** status precisely because they "*represent in an exceptional way the influence of Renaissance culture on the natural landscape*".

Piazza Umberto I - 44026 Mesola (FE)

INFORMAZIONI DELTA 2000

tel +39 0533 57693

info@deltaduemila.net



Information about accessibility

The Castle, which has a lift for easy access to all floors, was renovated in 2018, when the steps connecting the rooms were removed. Temporary events are held here, with variable arrangements such as conferences, weddings, exhibitions, etc.

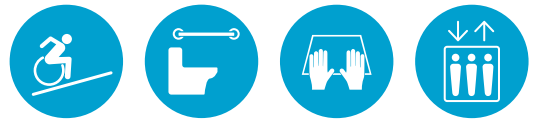
On the ground floor, after the ticket office, there are illustrative panels dedicated to the Este dynasty, showing

the family tree and some cartographies. On this floor there is also a toilet equipped with a ramp.

On the first floor, also known as the piano Nobile, were the flats of the Duke and Duchess. Here you can admire the Room Cesare Laurenti, dedicated to the painter for the wonderful ceramic work exhibited there.

DID YOU KNOW?

3,236,131 bricks were used to build the Castle, 11,076,056 for the lower court and 2,366,903 for the outbuildings in the Borgo Storico, for a total of 700,000 scudi (Italian coins prior to the 19th century).





Ecomuseo del Cervo e del Bosco della Mesola

03

The second floor of the castle is dedicated to the flora and fauna of the Mesola Wood and focuses particularly on the evolution of the Dune Deer species. The historical and modern relationship between the castle and the surrounding area is also interesting.

Here you can also see and touch a scale model of the island of Mesola, with the castle in relation to the territory, allowing you to discover the project

that Alfonso II wanted to realise. You can also learn about the importance of Torre Abate, a 16th-century manhole, which shows how the gates of Vinci functioned in regulating the inflow and outflow of water. It is incredible to think that it was once located on the drainage canal, near its outlet to the sea, where brackish water lapped against its walls.

Piazza Umberto I - 44026 Mesola (FE)

INFORMAZIONI DELTA 2000

tel +39 0533 57693

info@deltaduemila.net



Information about accessibility

The exhibition consists of information panels written in macro characters, accompanied by photos and images. There are a total of 32 panels, well lit, and organised in a loop circuit.

Some stations also include videos, but without subtitles.

The whole floor is free of obstacles and has a smooth pavement. The tour guides are trained to accommodate people with motor disabilities and specialise in school trips.

On the ground floor there is a toilet equipped with a ramp.

DID YOU KNOW?

The Dune Deer is the only specimen considered indigenous to the Italian peninsula.





Pomposa Abbey

04

One of the most important centres of spirituality and culture in the world, Pomposa Abbey, together with its 48-metre high bell tower, is a presence that stands out in the green plain where it is located. The abbey is the undisputed attraction of the area.

Here, from the 6th-7th centuries AD, the Benedictine monks developed an important monastic centre in the middle of the marshes, to try to live in peace and in contact with God, complying with the Benedictine rule "ora et labora"

(pray and work). From the 9th century, the complex became a real monastery and in 1022 the church obtained full autonomy, becoming one of the most important abbeys in Italy.

Over the years, it hosted many illustrious people, including Guido d'Arezzo, the famous monk who invented musical writing based on the seven-note system, and Giotto, who left his mark on the frescoes in the Chapter House through his school.

Via Pomposa Centro, 12 - 44021 Codigoro (FE)

INFORMAZIONI DELTA 2000

tel +39 0533 57693

info@deltaduemila.net



Information about accessibility

The reserved car park is about 100 metres from the Abbey complex, whereas the European Disabled Persons Identification Card holders can park at the tourist office, just 20 metres from the ticket office.

Visits to the different areas involve moving along open-air paths of dirt and scattered gravel. The ticket office, with a 4 cm step at the entrance, has a wooden scale model of the complex for visually impaired people. To get out and start the visit, it is necessary to climb a wooden ramp with a slope of less than 8%.

In the ticket office building on the ground floor there is also a toilet equipped with a folding handle, while on the first floor, accessible by lift, (74x85x120), there is a conference room, an equipped toilet and an open gallery overlooking the complex.

The visit continues towards the central *cloister*, from which it is possible to access the other areas to visit.

The *Refectory*, accessible by a mobile wooden ramp with a 13% slope, the *Hall of the Stilates*, visible only from the outside or on special occasions, is accessible by climbing 2 steps at the entrance and the *Chapter House*, with a 10 cm step.

The *Pomposian Museum* is on the first floor and can be reached by climbing 30 steps and then another 6. The access to the *Church* from the Cloister has 2 steps. For this reason, people with motor disabilities can reach the Atrium through a very long ramp with a 12% slope and then enter the Church.

DID YOU KNOW?

Dante Alighieri visited Pomposa Abbey on his last journey from Ravenna to Venice, shortly before his death in 1321 and mentioned it in his *Divine Comedy*.





Useful information

Tourist Office Codigoro

Lo IAT di Codigoro, ubicato all'interno del Complesso dell'Abbazia di Pomposa, presenta due rampe consecutive con pendenza inferiore all'8% per accedervi. Il servizio avviene al bancone e all'interno sono disponibili anche libri, gadget ed oggettistica in vendita del territorio e di Pomposa.

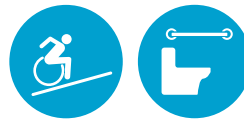
Via Pomposa Centro, 12
44021 Codigoro (FE)
tel. 0533 719110
iat.pomposa@comune.codigoro.fe.it



Tourist Office Mesola

Lo IAT di Mesola, ubicato nella bellissima Piazza adiacente al Castello, presenta un gradino all'ingresso e le persone con disabilità motoria o passeggeri possono accedere dall'entrata laterale, caratterizzata da rampa con pendenza dell'8%. Il servizio avviene al bancone e per qualsiasi domanda Simona e Ilaria possono aiutarti con piacere!

Piazza Santo Spirito, 3
44026 Mesola (FE)
tel. 0533 993358
prolocomesola@gmail.com



Ospedale del Delta

Via Valle Oppio, 2
44023 Lagosanto (FE)
tel. 0533 723111





VISITOR CENTRE CUBO MAGICO BEVANELLA

05





After a couple of kilometres of dirt road you reach the Visitor Centre, set in peaceful tranquillity.

You can distinctly hear the birds singing, and the only distraction is the sound of the wheels of bicycles riding along the cycle/pedestrian path that runs alongside it.

Immersed in an area of great environmental value, there is an interactive museum that will let you discover the geological evolution of the area and the functioning of the water-supply systems. This is the starting point of many routes, accessible on foot, by bicycle, boat or canoe.

Via Canale Pergami, 80 - 48015 Savio (RA)

INFORMAZIONI DELTA 2000

tel +39 0533 57693

info@deltaduemila.net



Information about accessibility

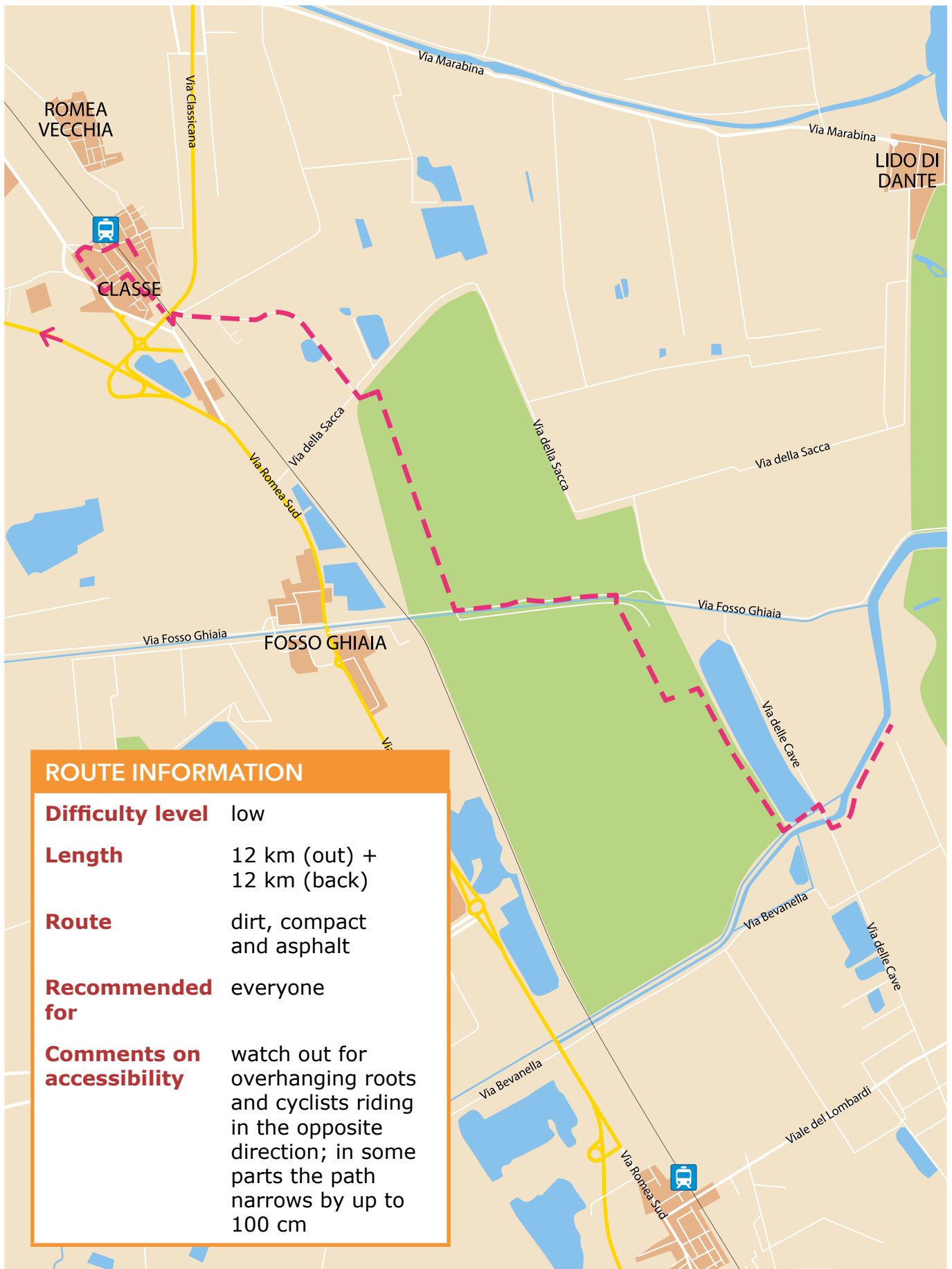
The Visitor Centre has two floors connected by an external lift. The rooms are barrier-free, there is a small refreshment area on the ground floor, and a fully equipped toilet on the first floor.

Outside, the green grass area has picnic tables, where you can enjoy your packed lunch or use the barbecue area.

You can rent bicycles or canoes to discover the surrounding area either independently or in groups.

To allow visits to families with small children or those with cognitive and/or sensory disabilities, the centre is equipped with two *OL3Bike inclusive tandems*.





ROUTE INFORMATION

Difficulty level	low
Length	12 km (out) + 12 km (back)
Route	dirt, compact and asphalt
Recommended for	everyone
Comments on accessibility	watch out for overhanging roots and cyclists riding in the opposite direction; in some parts the path narrows by up to 100 cm



Cycling in the pinewood

A round trip route leading from the Visitor Centre Bevanella to the Basilica of Classe and the Classis Museum. A route that combines an immersive experience in nature with a visit to a UNESCO site and a museum which tells the story of Ravenna, a city that was the capital city three times.

1st PART

from the Visitor Centre Bevanella to Sant'Apollinare in Classe

Leaving the Visitor Centre Bevanella, we climb up the embankment of the Bevano stream; here the climb is steep and it is important to be very careful. The route continues along the river bank, crossing it at Via delle Cave until you reach the entrance to the pinewood of Classe, which is on the right. Following the signs, sometimes hidden by vegetation, with numbering and the indication "Basilica di Classe", you will leave the pinewood and continue along Via Bosca. Be careful because when you cross the railway line the cycle path continues to your right and the signs are faded. This leads to via Battista Morgagni, then turn left into via

Pescara, where you will find the Basilica of Classe at the end.

2nd PART

from Sant'Apollinare in Classe to Classis

Leaving from the rear courtyard we find ourselves in Via Classense; continuing for about 300 metres, crossing the railway, on the right is the entrance to the Classis Museum.

3rd PART

from Classis to the Visitor Centre Bevanella

Leaving the Classis Museum, proceed back to the Visitor Centre Bevanella.

ACCESSIBLE WITH

- Bike
- Handbike
- CargoBike
- Tandem
- Wheelchair motor
- Power-assisted bike

We would like to point out that there are two sighting points along the route for birdwatchers: a hidden hut with a narrow passage of 45 cm and a raised hut accessible through two flights of stairs, with picnic tables for a break. Once back at the Visitor Centre Bevanella, we recommend you to leave by car and drive to the NatuRA Museum: in 36 km you will be able to dive into wonderful nature and discover many curious things!



Basilica of Sant'Apollinare in Classe

06

One of the best examples of an early Christian basilica, so well preserved that it takes your breath away!

It stands in a green plain and is dedicated to St Apollinaris, the first bishop of Ravenna.

Today it still retains its original beauty, thanks to the marble columns, the imposing decorations and especially

the mosaics of the apse, belonging to the last cycle of mosaic art from Ravenna, the pinnacle of Byzantine symbolism.

For many, the greatness of this place is not just about art, but about the discovery, growth and passion of worship visitor feel when they enter it.

Via Romea Sud, 224 - 48124 Classe (RA)

INFORMAZIONI DELTA 2000

tel +39 0533 57693

info@deltaduemila.net



Information about accessibility

The large car park has parking spaces reserved for European Disabled Persons Identification Card holders.

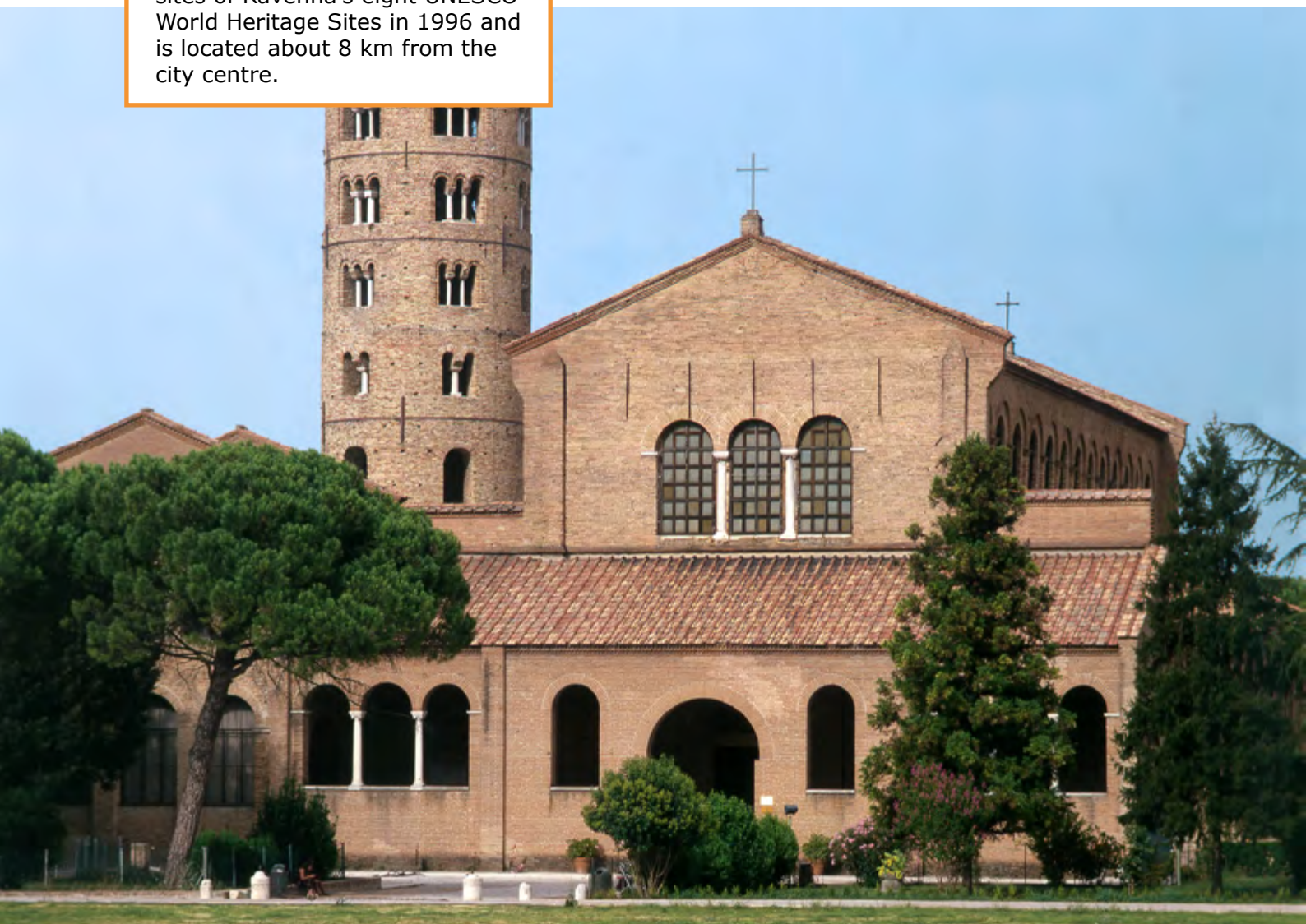
From the car park, a protected pedestrian path of about 250 metres leads to the Basilica (the last 10 metres are on uneven paving stones).

Ramps lead up to the Ticket Office/ Bookshop and the Basilica.

Halfway between the car park and the Basilica there is a toilet with a 3 cm step, where access requires a payment of 50 cents to the ticket machine.

DID YOU KNOW?

The Basilica is one of the eight sites of Ravenna's eight UNESCO World Heritage Sites in 1996 and is located about 8 km from the city centre.





Classis

07

The museum was opened in 2018, inside the renovated former sugar factory, a few metres from the Basilica of Sant'Apollinare in Classe. Conceived as the "Museum of the city and the territory", it describes the historical phases of the city through archaeological findings.

An important part of the museum is dedicated to navigation and the sea, because of their key role in the

development of the town, as well as the history of the sugar factory, which was important from an economic and social point of view.

The highly innovative equipment includes digital technologies as well as traditional models, through which the visitor can get a complete view of the area in relation to other city monuments, and be encouraged to go and visit them.

Via Classense, 29 - 48127 Ravenna (RA)

INFORMAZIONI DELTA 2000

tel +39 0533 57693

info@deltaduemila.net



Information about accessibility

The Classis allows European Disabled Persons Identification Card holders to park inside the complex, from where it is possible to reach the stairlift and access it via a ramp with a 6% slope. The stair lift allows access to all floors.

The exhibition surface is very large and is distributed over two more floors, which can be reached with ramps consisting of 5 steps or by lifting platforms, one on the right and one on the left of each level, with an entrance height of 91 cm and a length of 113 cm.

On the first floor are the ticket office, the bookshop and an equipped toilet. On the second floor, in addition to an exhibition hall that also hosts temporary exhibitions, there is a general hall used mainly for conferences and an equipped toilet.

Multimedia technology allows for video and audio tours. Guided tours for groups and individuals are available upon request.

DID YOU KNOW?

The Museum is also a place of research and training: in the laboratories, activities are carried out linked to degree courses on restoration, particularly mosaics, sponsored by the University.





Natura Museum

08

In this museum you will discover an incredible and innovative way to engage and enchant visitors, by listening to birdsong and discovering the fascinating mutations of animals to survive changes in Nature.

Specimens of stuffed animals from valleys, collections of butterflies, native and tropical insects, reptile and mammal specimens, shells and varieties

of wood fungi: so many different worlds to observe!

Younger visitors can play in the atelier, while older ones can participate in the educational workshop. This is the starting point for a variety of walking and cycling tours, aiming at the exploration of the area's typical features and biodiversity.

Via Rivaletto, 25 - 48123 Sant'Alberto (RA)

INFORMAZIONI DELTA 2000

tel +39 0533 57693

info@deltaduemila.net



Information about accessibility

The Natura Museum can be accessed from Via Nigrisoli, but we recommend entering from Via Rivaletto, where there is a small car park. The entrances are equipped with sliding doors and lead to the ground floor where there is a ticket office, bookshop area and an equipped toilet.

The exhibition halls are barrier-free. To reach the other two floors, stairs with handrails or a lift must be used.

On both floors, the exhibition rooms are furnished with display cases or showcases and connected with openings larger than 75 cm.

There is only one ramp on the second floor which is necessary to visit a reconstruction of a flamingo nest.

DID YOU KNOW?

Inside the museum there is a precious ornithological collection donated by Alfredo Bardolini, a 20th-century naturalist from Ravenna.





Useful information

Tourist Office Lido di Classe

The Tourist Information Office of Lido di Classe is located on the ground floor of a building near the main street of Lido di Classe. The entrance door, as well as the exit door, has ramps with a slope of less than 8%. The service is at the counter and brochures, maps and information material about the area and its tourist attractions are also available.

Viale Fratelli Vivaldi, 51
48125 Lido di Classe (RA)
tel. +39 0544 939278



Ospedale Santa Maria delle Croci

Viale V. Randi, 5
48015 Ravenna (RA)
tel. +39 0544 285111





NATURAL PARK OF CERVIA

09





DID YOU KNOW?

This area is a pole of the Cervia Salt and Sea Ecomuseum, because it contains the true "essence of the place". The enhancement of the memory of the area and its uniqueness will give you a better understanding of the current situation, starting from the evolution of history and development.

The Nature Park offers many paths to relax and enjoy the shade of the trees, perhaps on sunny summer days; you can sit on the benches and admire the colours, listen to the rustling of the leaves and the beating of the wings of the many birds that find shelter in the thick vegetation, or go for a jog. It is a protected area and it is not possible to pick flowers, smoke or enter with motorbikes.

A green oasis of 27 hectares where you can visit "La Vecchia Fattoria" (Old Macdonal's farm) and come into contact with all the animals present, such as donkeys, goats, sheep and rabbits, feeding them and, why not, hugging them.

If you like adventure, you can take the suspended trails through the trees, suitable for both children and adults.

Via C. Forlanini (zona terme) - 48015 Milano Marittima (RA)

INFORMAZIONI DELTA 2000

tel +39 0533 57693

info@deltaduemila.net



Information about accessibility

The entire park is well-maintained, with dirt, grass and some gravel paths. At several points there are information panels with information on the fauna and flora and many interesting facts about the area.

The botanical trail is a loop tour with information panels describing the different species of vegetation. It is on grass and compact but a little difficult only with a manual wheelchair.

In the central part there is a refreshment area that also offers snacks and dishes for people with coeliac

disease, which has a side access slide with a 9% slope; picnic tables with fixed benches are available outside. The toilet is available to all park guests and also has a baby-change table.

An *electric shuttle bus* is available at the Nature Park to make it easier for people who have difficulty walking long distances to visit the park (they can transfer to the shuttle bus independently).





Cycling between the port and the saltworks

Loop route starting from the Natural Park of Cervia, Casa delle Farfalle, MUSA (Salt Museum), Visitor Centre Le Saline and back. An educational nature trail, suitable for everyone and all vehicles. Most of the route is asphalted and protected; some short sections are mixed with city traffic, with limits at 30 or 50 km/h.

1st PART

from the Natural Park of Cervia to the Casa delle Farfalle

Leaving the park on Via Forlanini, at the end of the road on the right, take the cycle path, first gravel and then asphalt, until you reach the Casa delle Farfalle. The last 300 metres are on the road, pay attention to the traffic.

2nd PART

from the Casa delle Farfalle to the MUSA, Museo del Sale

Leaving the Casa delle Farfalle on the right, 300 metres on the left you will find via Stazzone, a dirt road that crosses the pinewood until it reaches the asphalt cycle path that runs alongside via G. di Vittorio. Follow it as far as the bridge over the Cervia Canal, also crossing a traffic light for bicycles, to turn left where you will find the MUSA a few metres away.

3rd PART

from the MUSA, Museo del Sale to the Visitor Centre Le Saline

Leaving the MUSA follow the canal to the left along the cycle path that runs alongside it up to the bridge, and then turn left again onto the mixed traffic road and take via Ospedale at the roundabout. After the level crossing, be careful to keep to the right along via Bova, which has a protected route, at the end of which you will find the SS 16 subway that connects you to the Visitor Centre Le Saline. The entire route is asphalted.

4th PART

from the Visitor Centre Le Saline to the Natural Park of Cervia

Go back along the route as far as the crossroads with Via Stazzone and continue along Via G. di Vittorio, staying on the cycle path which continues after the level crossing, flanking the Natural Park, until the entrance from where you started. In the last part the path is a little uneven.

ACCESSIBLE WITH

- Bike
- Handbike
- E-Scooter
- Wheelchair
- Wheelchair motor
- Power-assisted bicycle



Casa delle Farfalle

10

You will be surprised by the spectacle of nature, a unique emotion! At the environmental education centre you can discover the thousands of colours of tropical butterflies, kept inside a greenhouse that gives the centre its name, or enter the Insect House, where you can discover all the secrets of the insects that live in the three main environments: soil, water and air. Dive into this world thanks to interactive and multimedia stations, or by admiring the display cases where you can meet them up close.

The outdoor butterfly garden offers the possibility of visiting the Botanical Path, while in a small greenhouse, called the Caterpillar, you can also admire specimens of local butterflies.

When you finish your visit, don't forget to take home a souvenir dedicated to biodiversity: a book or accessories and tools to build your own butterfly garden at home!

Viale Jelenia Gora, 6/D - 48015 Milano Marittima (RA)

INFORMAZIONI DELTA 2000

tel +39 0533 57693

info@deltaduemila.net



Information about accessibility

The whole complex is well maintained, both the external connecting paths and the internal areas.

All routes are barrier-free and each enclosed area has an entrance and an exit to facilitate the visit.

The greenhouse of the Casa delle Farfalle has a compact and highly visible floor, thanks to the contrasting colours; please do not touch the butterflies and above all watch your step! Dogs are not allowed to enter and guide dogs are also not recommended, due to vegetation, which, if ingested, can be harmful for animals.

The insect house has spacious rooms, as does the ticket office, where you can find a snack bar and two fully equipped toilets, one for women and one for men; in the women's toilet there is also a baby-change table.

The outdoor area is grass and the paths are made of compact material. On the paths of the Botanical Trail there are information panels about the flora, written in macro characters at a maximum height of 90 cm, while the greenhouse "the Caterpillar" has a step at the entrance and one at the exit.

DID YOU KNOW?

Insects are very patient and some use camouflage tactics to hide from predators and are able to sit still for days.





MUSA, Museo del Sale di Cervia

11

A place to truly learn about and understand the salt tradition.

Tools and utensils are preserved, as well as information on traditions, legends and popular sayings related to salt and the development of Cervia. The tour tells the story of the development of the salt civilisation: the so-called "white gold", a precious element in food preservation. The city's history is linked to salt processing. As a matter of fact, its secrets were handed down from

father to son and, inside the Museum, you can breathe in the life and smell of the days lived in the saltworks.

Since 2013 there has also been an archaeological section housing important findings that trace the history of the area, including the mosaic carpets from the Church of San Martino (6th century), discovered in 1989 in an area adjacent to the saltworks.

Viale Nazario Sauro, 24 - 48015 Cervia (RA)

INFORMAZIONI DELTA 2000

tel +39 0533 57693

info@deltaduemila.net



Information about accessibility

The MUSA is located in a pedestrian area, adjacent to the port channel, where the paving is compact and made of *sanpietrini*. Access is via a colour-coded wooden ramp, while all internal routes are obstacle-free.

The visit has a defined itinerary, starting with the history of the town and the evolution it has undergone over the years, when most of the population

was engaged in the salt processing, and then continues with the tools and utensils of daily working life, including a real *burchiella*.

The route ends with the archaeological area, where you can admire objects, documents and findings from the area. There is a wooden model of the salt sheds complex, which can be touched. An equipped toilet is available.

DID YOU KNOW?

Until the 1960s, salt was transported with the *burchiella*, a flat-bottomed boat. Every year the transport to the warehouses is commemorated with the "rimessa del sale" (salt shed), a symbolic arrival in the old commercial area of Cervia of a *burchiella* loaded with "white gold".





Saltworks of Cervia

12

The saltworks is a magical place, especially at sunset, thanks to the vegetation and the many species of birds that find the right environment to stop, eat and nest here.

There used to be 144 salt pans, one per family. In 1959, the harvesting method was changed from multiple harvesting to single harvesting, always in an artisanal way just as in the past, but with the help of a conveyor belt and a trolley, which is like a small train.

Today you can see the multiple collection system at the Salina Camillone, which remains operating as Musa's open-air venue. The Visitor Centre is equipped with educational facilities for real workshops, games and routes that will help you better understand the salt pan, its origins and all the information on the flora and fauna that populate it. The visit is only possible by prior arrangement and can be made on foot, by bike, boat, canoe or train.

Via Bova, 61 - 48015 Cervia (RA)

INFORMAZIONI DELTA 2000

tel +39 0533 57693

info@deltaduemila.net



Information about accessibility

The Visitor Centre has spacious and obstacle-free rooms. The teaching rooms are equipped with mobile chairs and access to the birdwatching room is via a ramp. The birdwatching windows are positioned at various heights.

In the outdoor area there is a bar, which offers snacks for celiacs and gluten-free piadina romagnola on request, accompanied by local ham and cheese.

The most accessible solutions are the walking routes and the train ride: the pedestrian routes have grass or dirt paving, while the excursion with the train, which does not include a descent, allows access to the last carriage with one's own wheelchair by means of an aluminium slide.

Visits are only possible by prior booking.

DID YOU KNOW?

In the summer months, the salinity of some of the pools becomes high and microscopic red algae proliferate and colour the water. Don't miss out this wonderful spectacle!





Useful information

Tourist Office Cervia

The Tourist Office of Cervia is located near the MUSA, inside the Torre San Michele, which was built as a defence tower against assaults from the sea. The entrance has 5 steps that can be overcome with an elevating platform, equipped with a bell to alert the internal staff. Service is provided at the counter by very professional, friendly staff.

Via Evangelisti, 4
48015 Cervia (RA)
tel. +39 0544 974400
iatcervia@cerviaturismo.it



Ospedale San Giorgio

Via Ospedale, 17
48015 Cervia (RA)
tel. +39 0544 917650



THE FLAVOURS OF THE DELTA

Romagna and Emilia, indissolubly united by a food and wine heritage that in the Po Delta finds in the typical local products an extraordinary resource, result of the rural system of each territory without forgetting the sea, the valleys and the treasures they contain.

Their preservation is of fundamental and necessary to protect traditions

through the promotion of typical products.

How many flavours and fragrances can you discover in these lands! Simple tastes that will remain in your memory, to be enjoyed in the inns, traditional taverns and restaurants that offer the truest and most genuine traditional dishes.



Local products

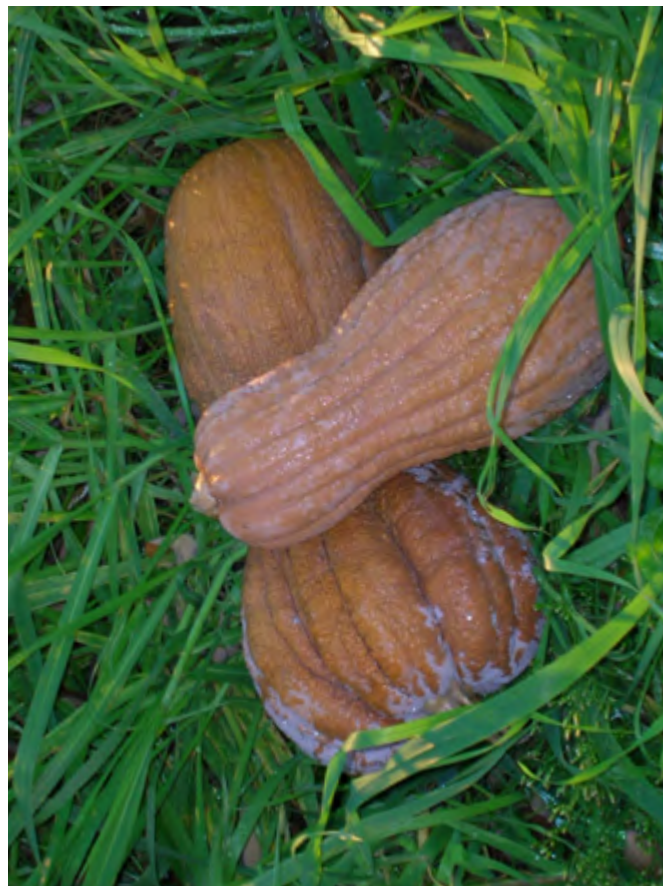
ASPARAGUS OF MESOLA

The Po Delta asparagus is grown in sandy and well-drained soils, such as the **typical Mesola asparagus**, which is excellent boiled, raw in salads or in many dishes such as omelettes, soups, pasta and risottos. There are many recipes for creating extraordinary dishes with asparagus, but we recommend a classic risotto (perhaps with pumpkin, a traditional product of Ferrara, see below) or rice croquettes with asparagus, fried or with tomato sauce.



PUMPKIN "VIOLINA"

In the province of Ferrara, the **"violina" pumpkin** is grown. Its name has nothing to do with its colour, since this kind of pumpkin is not purple but rather intense orange, but refers to its shape, which resembles a violin case. Of excellent quality, it can be used in countless ways, from classic *cappellacci* to *gnocchi* or fried, in sweet or salty dishes. The pumpkin can be eaten boiled or baked, but the dish par excellence of Ferrara cuisine is *cappellacci di zucca*.



THE CARNAROLI RICE OF THE DELTA

The humid soils are ideal for growing the **Carnaroli rice of the Delta**; story goes it has been introduced by the Este family, who enhanced the unused marshy areas with rice fields. This fantastic rice can be used to prepare many tasty dishes, but we recommend vegetable risottos or rice *frittelle*.



PIADINA ROMAGNOLA

Traditionally prepared with flour, water and lard, the **piadina romagnola** is a simple, rustic product known in Italy and abroad and has recently been awarded PGI status. There are many combinations for the filling. We recommend the classic versions (depending on the area): *squacquerone* cheese and rocket salad, with Mora Romagnola ham, or with oily fish such as *saraghina*, with salad, shallots or fresh onions.



SEA SALT OF CERVIA

Cervia's sea salt has ancient origins. Already in Roman times, salt production in this area was abundant and a source of rich trade, and in the Middle Ages it became fundamental to the economy of the whole of Romagna. The Magazzini del Sale (Salt Warehouses), the tower of San Michele and the houses of the salt workers in the old town centre testify to how important salt was for the whole town of Cervia.



Slow food protected

EEL OF COMACCHIO

The **eel of Comacchio** has roots stretching back thousands of years and testifies ancient culture and traditions. It originates in the Sargasso Sea, crosses the Atlantic and reaches the calm waters of the Po Delta where it remains for 15 years before returning to its place of origin. The best way to enjoy it is certainly according to the traditional method, i.e. marinated, but it is also excellent with a tasty broth, with classic risotto, grilled or smoked. Autumn is the time of year for fishing because its meat becomes particularly tasty.



Slow food protected

VINI DEL DELTA DEL PO

The **wines of the Po Delta** in Emilia Romagna will be a pleasant discovery! The Burson, produced in the province of Ravenna, is a wine with a strong personality, with unmistakable aromas, whereas the Sabbie wines are cultivated in the sandy soils of the coastal area that reach from the mouths of the Po di Goro to the delta of the river Rhine.



THE GOLDEN BEACHES

There are many proposals on the Po Delta coast in Emilia-Romagna from which you can choose: a seaside holiday for seniors, with friends or family, it will always be an explosion of emotions and fun!

We can divide the coast into 2 large areas: the Comacchio coast and the Ravenna coast. The former extends for about 26 km, divided into 7 lidos, while the latter covers 35 km.

All the beaches are golden and also leave space for nature reserves.

The sea slopes slowly, so you can let the children go on pirate adventures, searching for hidden treasures on the seabed or hunting for tiny fish. You can choose to stay in equipped beach areas offering many services, enjoy the sea and the beach in unspoilt spaces, or look for fashionable kiosks for *aperitivi* at sunset.

You can live with your feet on the sand, letting yourself be carried away by the sound of the waves, enjoying the many shades of the sea.



Information about accessibility

All equipped beaches have been trying to improve their accessibility for years. Entrepreneurs have decided to purchase many aids such as plastic footbridges that can be positioned to reach the shoreline or to reach the beach umbrella, raised sunbeds or beach wheelchairs for bathing in the sea.

Several initiatives have been carried out with the aim of making the beaches accessible to all through the installation

of signs for reserved parking spaces, wooden walkways with dedicated routes and well-marked wheelchairs for the disabled.

The Cervia beach has for many years had an initiative called "A lifeguard for a friend", a unique service in the panorama of Italian beaches. Make an appointment and you will find for free a lifeguard and an accompanying person for safe bathing.



The Po Delta App

Accessible tourism



A new app that aims at promoting Tourist Hospitality for everyone through the use of innovative new technologies, such as the IBeacons, technological transmitting systems which, connected to an application, allow multimedia content to be enjoyed.

The app makes it possible to interactively enjoy the naturalistic and environmental routes in the three chosen sites, allowing the visit through both audio and textual guidance to favour people who are visually impaired - thanks to audio texts describing the conditions of the sites and characteristics of the environment to be noted - but also through video content to illustrate the particularities of the sites and the surrounding territory of the Emilia-Romagna Delta.



Interactive visitor routes in the visitor centres of the Natural Reserve Bosco della Mesola and Cubo Magico Bevanella in Ravenna and the Natural Park of Cervia.

Simply scan the QR code on the supports to download and access the app available in Italian and English.

Tourism4all

Tourism4all is a European cooperation project funded by the INTERREG V A 2014 2020 - Italy-Croatia CBC Programme for the development of a cross-border network for the promotion of accessible tourist destinations.

The objective of TOURISM4ALL is to develop and promote a wide cross-border network of tourist destinations with accessible natural and cultural heritage, sharing approaches, methods and joint promotion services especially for people with special accessibility needs, such as disabled and elderly people

but also families with children, as well as training activities for public and private operators.

There are many tools that have been put in place through TOURISM4ALL and from which the whole territory of the Emilia-Romagna Delta, its private operators and public decision-makers will be able to benefit also to identify new policies and interventions to favour accessibility for all.

The project envisages actions to improve accessibility, information and services in ten areas - natural or cultural sites - at partnership level, also promoting tourist destinations with an accessible tourism offer, spreading the concept of tourist hospitality for all.

DELTA 2000

Partner of the Project Tourism4All

Aids bought to enhance accessibility



Inclusive tandem OL3BIKE.
Available at:

- Visitor Centre Cubo Magico Bevanella
- Natural Reserve Bosco della Mesola



Cargo Bike to easily transport your children. Available at:

- Natural Reserve Bosco della Mesola



Electric Buggy.
Available at:

- Natural Reserve Bosco della Mesola



Electric shuttle bus to facilitate transport for people with walking difficulties. Available at:

- Natural Park of Cervia



Picnic table with extension to make it easier for people who use a wheelchair to get close. Available at:

- Natural Reserve Bosco della Mesola

Credits

Guide realised by Delta 2000 partner of the project TOURISM4ALL - Development of a cross-border network for the promotion of accessible tourist destinations realised with the programme Interreg CBC Italy-Croatia INTERREG V A 2014 2020 co-financed by the European Regional Development Fund. Website of the project: <https://www.italy-croatia.eu/web/tourismforall>

Disclaimer: The information and opinions expressed herein are the sole responsibility of the author. The content of this publication does not necessarily reflect the position of the European Union and the authorities of the Italy-Croatia programme. The programme authorities are not responsible for any use that may be made of the information contained therein.

Responsible of the project

Angela Nazzaruolo (Coordinator Delta 2000)

Collaborators

Marzia Cavazzini, Tristana Randi

Special thanks to

Natural Reserve Bosco della Mesola - FE:
Stefano Casellato
Visitor Centre Cubo Magico Bevanella - RA:
Luca Alberghi
Natural Park of Cervia - RA: Chiara Tiozzi
Castle of Mesola and Museo del Cervo
e del Bosco della Mesola - FE: Stefano Casellato
Pomposa Abbey - FE: Licia Diamanti
Classis Museum - RA: Fabrizio Corbara
Museo Natura - RA: Luca Alberghi
Museo del Sale - RA: Annalisa Canali
Casa delle Farfalle - RA: Chiara Tiozzi
Saltworks of Cervia - RA: Chiara Tiozzi

Editing and coordination

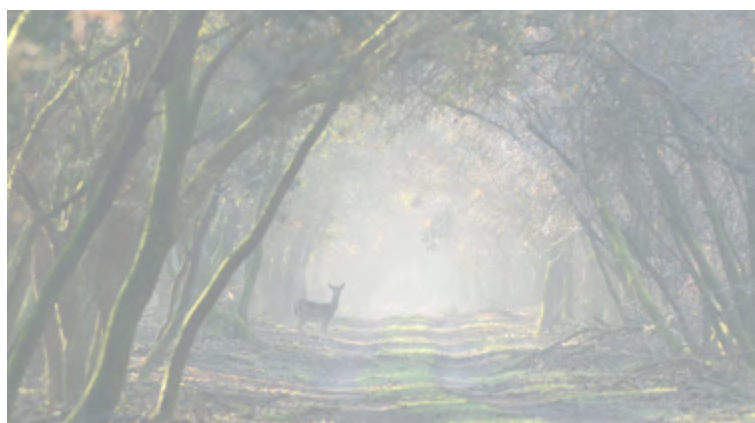
Silvia Bonoli, Roberto Vitali
(Village for All - V4A)

Graphic project

Wamo Studio - FE

Photography credits

Cover: Milko Marchetti (1-2),
Marco Andreani (3), Luca Bianchi (4)
Pag.7: Marco Andreani
Pag.8: Giovanni Frescura
Pagg.10, 19, 23, 28, 41, 46(3),
49(1-2), 50: Milko Marchetti
Pagg.11, 12, 24, 53(1-4):
Village for All archive - V4A
Pag.14: Province of Ferrara
Pag.15: Andrea Padovan
Pag.16, 21, 32, 53(3):
Pro Loco Mesola archive
Pag.17, 18, 46(1-2), 47, 48(1-2-3), 53(5):
Delta 2000 archive
Pag.20: FB page Pomposa Abbey
Pagg.22, 30, 33, 34, 35, 36, 39, 44, 49(3):
Giratlantide
Pag.27: Stefano degli Esposti
Pag.29: Museo Classis
Pag.31: Davide Pansecchi
Pagg.40, 45: Florio Badocchi
Pagg.42, 43: Gabriel Bernabini
Pag.46(3): Saltworks of Cervia
Pag.51: Consorzio Navi del Delta
Pag.53(2): Pierluigi Benini



This guide was realised within the project TOURISM4ALL - DEVELOPMENT OF A CROSS-BORDER NETWORK FOR THE PROMOTION OF ACCESSIBLE TOURIST DESTINATIONS, realised with the programme Interreg CBC Italy-Croatia INTERREG V A 2014 2020 co-financed by the European Regional Development Fund.
Project website: <https://www.italy-croatia.eu/web/tourismforall>

Delta 2000
Strada Mezzano, 10
44020 Ostellato (FE) – Italy
Tel +39 0533 57693/57694
info@deltaduemila.net
deltaduemila@pec.it
www.deltaduemila.net