

NEWSLETTER NUMBER 3

January 2021



Interreg
Italy - Croatia
RECOLOR

European Regional Development Fund



EUROPEAN UNION

PROJECT NAME

RECOLOR

Reviving and Enhancing artworks and Landscapes Of the Adriatic.

PROJECT PARTNERS

Emilia-Romagna Region - General Directorate Economics of Knowledge,
Labor and Enterprise - LEAD partner

Polytechnic of Šibenik

Municipality of Campobasso

Municipality of Cividale Del Friuli

Montefeltro Sviluppo Consortium

Alma Mater Studiorum – University of Bologna

Municipality of Labin

City of Zadar

Park as a Labin's, Istrian, Croatian and European story

The previous six-month period was extremely rich in activities of promotion and development of pilot actions aimed at the Dubrova Sculpture Park. Not only was the Strategy of cultural and tourist valorization of the Park presented to the public, but work on the Park Sustainability Study also began.

September 2020. - The 42. Mediterranean Sculpture Symposium was held.

50 years of tradition of one of the most important art events in this area, the Mediterranean Sculpture Symposium [MKS], which has been held almost continuously since the 1970s in the area of Dubrova near Labin.

From September 18 to October 10, 2020, the Croatian sculptor Denis Krašković participated in the 42nd Mediterranean Sculpture Symposium and with his sculpture the Snail joined other great artists who left their mark in the Park.

Again the treetops on Dubrova were white with stone dust, and the sound of the stone forming merged with the chirping of birds. Another sculpture has permanently found its place among meadow fragrant flowers, it will persist in its permanence and importance over the years, providing new generations with a place to play, think, and sometimes meditate.

At the very opening of the 42nd MKS, the mayor of Labin conveyed this message: “Here we have a beautiful and valuable space with a vision of, I would dare say, a bright future. I thank everyone who created the MKS for years, and above all those who, unfortunately, are no longer with us, especially the artist and the man who founded the MKS, lived and gave himself for the idea of the MKS, Mr. and academic sculptor, Josip Diminić, and everyone to others who have made this special place out of only one meadow. And I hope that together we will make the MKS in Dubrova not only our, Labin's story, but that the story be Istrian, and I would dare to tell a Croatian and European story. I believe that Dubrova will become a place and a landscape where culture and art, nature and tourism merge, and where we all merge as people. ”



Photo:Gloria Sellan,
Carving snail in process.

October 2020 - The Strategy of Cultural and Tourist Valorization of the Dubrova Sculpture Park was presented

After seven months of drafting the Strategy, in which, in addition to the City of Labin and the Mediterranean Sculpture Symposium, the administrative departments of the Istrian County (the one for culture and homeland, tourism and sustainable development) and the Tourist Board of Labin and Sveta Nedelja Municipality and others participated. presented to the public at the Kocka Information Center in the Park. The bilingual strategy of about 80 pages brings three priority areas of valorization of cultural and natural heritage of this area aimed at tourism:

1. Increasing the sustainability of the Park's management in the direction of sustainable cultural and recreational tourism while maintaining the primary function and identity of the Park - the availability of culture and the creation of new cultural products,
2. Verification and valorization of cultural heritage (cultural property),
3. Valorization of the natural environment in which the sculptures are located.



Presenting the Strategy, press conference (up).

Photo: Gloria Sellan

Study contractor - Vedran Vivoda (right).

Photo: Renata Kiršić



November 2020 - Sustainability Study of the Dubrova Sculpture Park

The maker of the Study, Crane 51, began the first phase of the Study in November last year, and it is expected to be completed soon. This study will show the City of Labin, the MKS Association, but also the general public in what ways the sustainability of the Park can be achieved in financial, environmental and social terms. We believe that already this year the Study will be crucial for placing new products and services on the market, which would enable the diversification of the association's revenues and ensure stability in the implementation of the program as well as in site management.

Renata Kiršić, President of the MKS, thanked the City of Labin for including this Park in the international project RECOLOR, in which all partners and associated stakeholders were given the opportunity to exchange experiences and gain new knowledge and use quality documents as a basis for further development.

The realization of the pilot project in Šibenik is focused on three main activities: the organization of a green market, painting workshops and various cultural / entertainment events. With the opening of the green market on the location of the Mala loža (Piccola loggia), this small picturesque square next to the church of St. Ivan in the old town of Šibenik was revitalized. Polytechnic of Šibenik provided multifunctional counters where local family farms presented and sold their products in the morning hours. In the afternoon, painting colonies were organized during which the artists visited several locations in Šibenik and its surroundings, painting the views of the city of Šibenik. At the end of the painting colonies, the east wall of the church of St. Ivan along with the multifunctional counters served as a background for the exhibition of paintings created during the workshops



Photo: Ivan Buvinić.



ZADAR

Exploratory archeological works organized by the City of Zadar as part of the implementation of the RECOLOR project began on Monday, September 7, 2020 at the Zadar Sphinx.

All research works are carried out in accordance with the special conditions for the protection of cultural property set by the Zadar Conservation Department, since the park with Villa Atilia, Sphinx sculpture and other elements in the park is part of the cultural and historical ensemble protected as a cultural asset of Croatia. Archaeological excavations are currently being carried out on the Sphinx sculpture itself.



As part of the conservation and restoration works, a 3D scan will be carried out and the layout of the original historical model will be made according to the available historical documentation. Laboratory research will also be carried out on the negative elements that affect the decay of the sculpture, and the effect of salt and the proximity of the sea is especially important. Based on the research, it will be easier to create a recipe for the rehabilitation and repair of the concrete layer, and also to determine the optimal impregnation layer that will protect the sculpture after the work is completed. To make the final layer, it is important to know the condition of the metal reinforcement and it will be checked by testing with a profometer and thermo-camera, since so far the amount of iron reinforcement hiding under the upper layer of concrete has not been determined more precisely.



CIVIDALE DEL FRIULI

In the last few months the municipality of Cividale del Friuli has carried out the first phase of its pilot action, particularly regarding The Monastery of Santa Maria in Valle and the Lombard Temple, the historical core of Cividale del Friuli.

A campaign of cutting-edge diagnostic investigations and 3D surveys, ultraviolet fluorescence photographs, a multispectral shooting, to analyze the ancient pigments, and much more were performed in the Lombard temple both for archaeological analysis reasons and for future 3d reconstruction and virtual restoration.

A reorganization and implementation was also carried out on the cartographic database concerning the most important archaeological excavations on the Cividale site, which is fundamental to have precise planimetric references that are very important both from an archaeological point of view and for the future development of the Cividale pilot action.



Beyond the technicalities, the archaeologist in charge of supervising the Cividale project has had and will have a few meetings to explain intentions and prospects of the Recolor Project and Cividale's pilot action to the students of some high schools in Cividale.

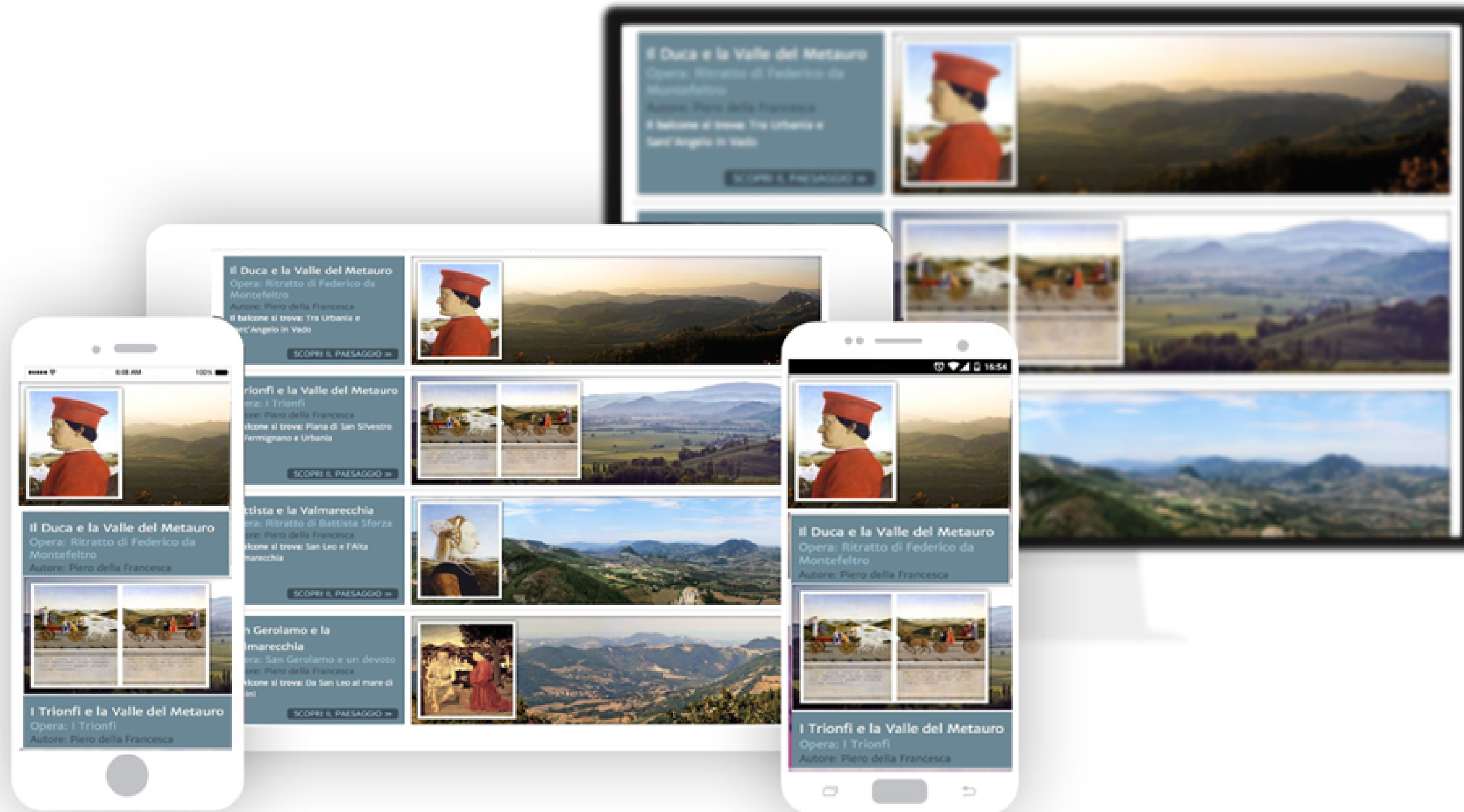
Photo G. Burello, details of the stucco decorations of the Longobard Temple, VIII century.



EMILIA-ROMAGNA REGION AND GAL MONTEFELTRO SVILUPPO

16

The collaboration between the Lead Partner, Emilia-Romagna Region, and the neighboring Partner, GAL Montefeltro and Sviluppo continues for the realization of the ambitious pilot project: the creation of a new and unprecedented tourist scenario, which enhances the landscape of the extraordinary territory of Montefeltro, portrayed in some of the major works of art of the Italian Renaissance, such as the "Gioconda" (Mona Lisa) by Leonardo Da Vinci, the "Baptism of Christ" and the "Portraits of the Dukes of Urbino" by Piero Della Francesca and many others. Right from the start, the planning of strategic communication played a fundamental role for the realization of the pilot and to guarantee usability and a structured engagement of its target thanks to new technologies. In fact, despite logistical difficulties due to the Covid19 pandemic, the far-sighted and well-structured implementation methodology that has always underpinned the pilot has allowed us to continue working following the initial guidelines.



The realization of the Web App and the e-book related to the pilot project are underway through in-depth iconographic research, innovative digitization techniques, contributions from art history and geomorphology experts, web and press marketing activities for local, national and international promotion. Tourism promotion experts are working on the definition of the tourism product, while the planning and construction phase of the observation spots from which it will be possible to observe the correspondence between works of art and landscapes will soon be boosted.

Furthermore, the research does not stop, and new correspondences between the landscapes of Montefeltro have been found in three artworks by Leonardo di Vinci that had not yet been geographically identified. This important discovery accredits the climate of cultural fervor and dynamism of the Duchy of Urbino: artists, mathematicians and architects used to come to these lands and find a natural landscape of great impact and inspiration waiting for them. A landscape that today offers itself to tourists and visitors as a true outdoor museum to be discovered.



Mt. Aquilone present landscape (a) compared with Leonardo's drawing (Sheet Windsor, Royal Collection, Ph Scala, Firenze)(b). From "The usefulness of geomorphology for finding the landscapes drawn by Leonardo Da Vinci in the Montefeltro region (Central Italy)" by Rosetta Borchia, Olivia Nesci

Also, on the communication front, some project gadgets were created in eco-sustainable materials, water bottles and block-notes, while an ethical fashion laboratory, Cartiera, realized the shopping bags.



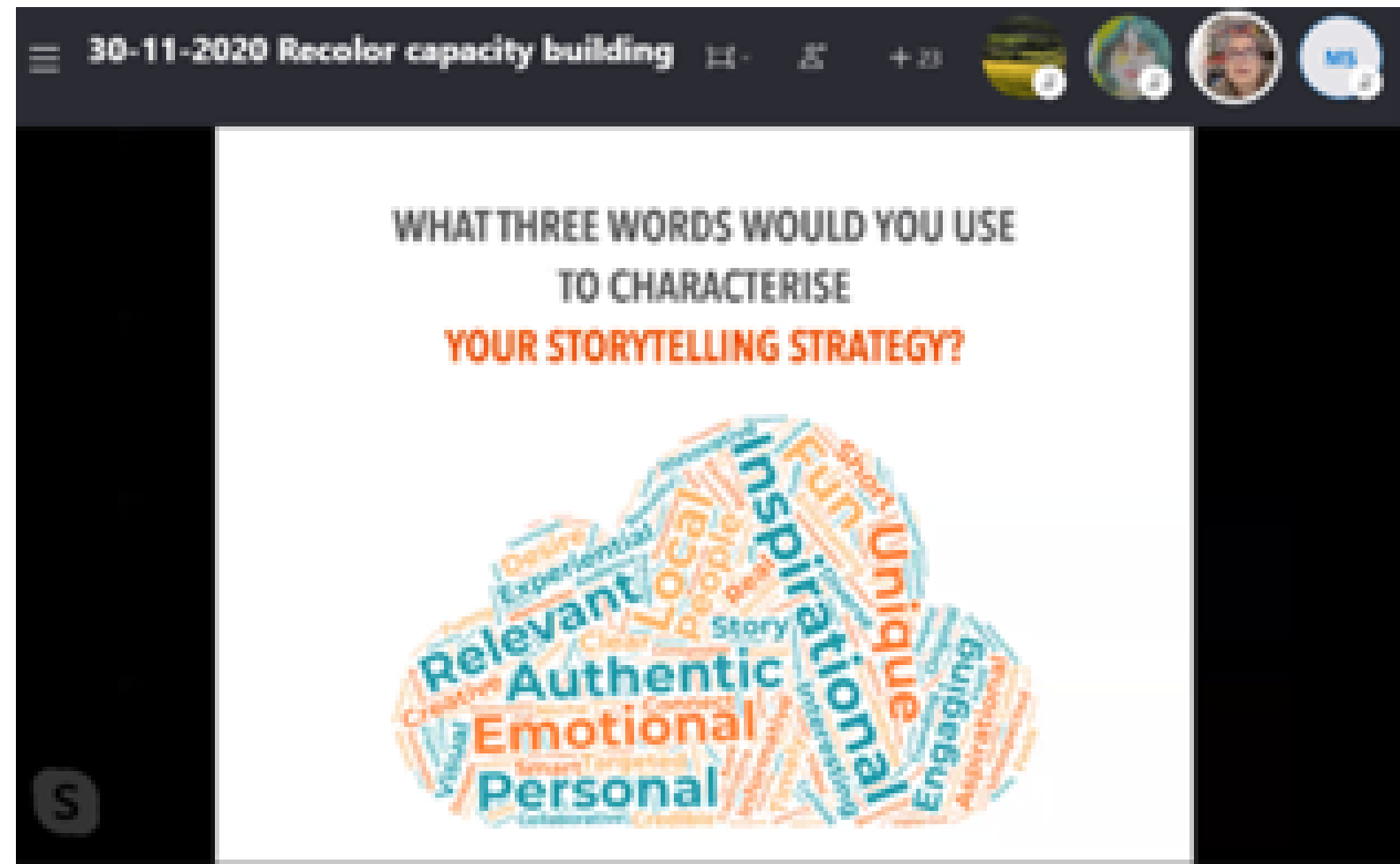
CARTIERA è un laboratorio di moda etica che realizza accessori in pelle e tessuto lavorati secondo le tecniche artigiane del Made in Italy, recuperando materie prime dall'industria dell'alta moda e impiegando persone in condizioni di svantaggio.

CARTIERA is an ethical fashion laboratory, where leather and fabric accessories are realized, implementing the artisan techniques of Made in Italy. Materials are recovered from the High fashion industry and processed by disadvantaged people.

CAST - UNIVERSITY OF BOLOGNA

- RECOLOR works to effectively contribute to improve the capacities of cultural institutions, creative industry and destination management organisations for a sustainable use of natural and cultural heritage. To this extent, the CAST-University of Bologna team organized a series of capacity building workshops to support all project partners to engage more effectively and work together towards the common goals.
- The first session took place in October 2020. The workshop was primarily aimed at project partners, but also at representatives from the culture/heritage and tourism industry. It was meant to strengthen members' knowledge of design approach and method as a tool to increase the effectiveness of their engagement, boosting their capacity to build effective alliances, particularly at the local level. The session was highly interactive, as it included presentations and discussions as well as practical workshops featuring exchanges, group exercises, and learning on user-engagement and cross-sectoral working.

The second session was held in November 2020 and it was inspired by “design fiction” principles: participants “travelled to the future”, got insights and used them here, in the present, to design better paths for their pilots and make sure to build them so to attain the results they wish to. Participants were called to take part into a virtual journey called “The Discovery Bus”, which features on board an exhibition about the pilots and travels across Italy and Croatia to inform and spread the news about the landscapes of art.



CAMPOBASSO

The pilot action will take place in the historical city center of Campobasso, which is located along the slopes of the Monforte hill. This area was identified not only because it is rich in history and cultural assets, but also because it is a SCI (Site of Community Importance) area, characterized by the presence of protected species of flora and fauna. The choice was made also because the identified area is the background of a famous painting of Gianmaria Felice that represents the landscape of the city with symbolic buildings and environmental assets: Monforte Castle, churches, city walls that are still recognizable and can be visited today.

The painting is an important “document” that certifies the peace between the confraternities of the “Crociati and Trinitari”, who were competing for social and economic power over the city. The event, which will combine the protection of the natural landscape with cultural and tourist promotion, enhancing the context and transforming it into an open-air museum, will consist of the creation of three paths that will start from the city center and will end at the Monforte Castle.



"The Peace between the Crociati and Trinitari" _ Gianmaria Felice

The three itineraries will be recognizable thanks to the creation of special panels on which a QR code will be indicated through which information on the place, history, etc. can be downloaded.

The identified routes are:

- Environmental Path: it will allow you to discover and enhance the Monforte hill also from a naturalistic point of view as it is recognized as a SIC Area (Site of Community Importance) thanks to its rich vegetation and flora and fauna that are unique;
- Historical Itinerary: the idea is to recreate an itinerary that immerses the tourist in the history of the city thanks to the story of the two brotherhoods of the "Crusaders and Trinitarians" who see peace in 1587, also using the images of the painting by Gianmaria Felice;
- Architectural Path: it will include the visit to the monuments of the city historic center such as museums, churches, towers and city walls. The tourist will cross a path rich in history, culture, traditions and nature.



Monforte hill



Interreg
Italy - Croatia
RECOLOR

European Regional Development Fund



EUROPEAN UNION

We're social • follow us:



@projectrecolor

#ProjectRecolor
#InterregRecolor

www.italy-croatia.eu/web/recolor