

# PARTNER PRESENTATION

## *PP8 DELTA2000*

EXCOVER | Marzia Cavazzini - Mauro Conficoni

Kick-Off Meeting | Karlovac, Croatia | March 12<sup>th</sup> - 14<sup>th</sup> 2019

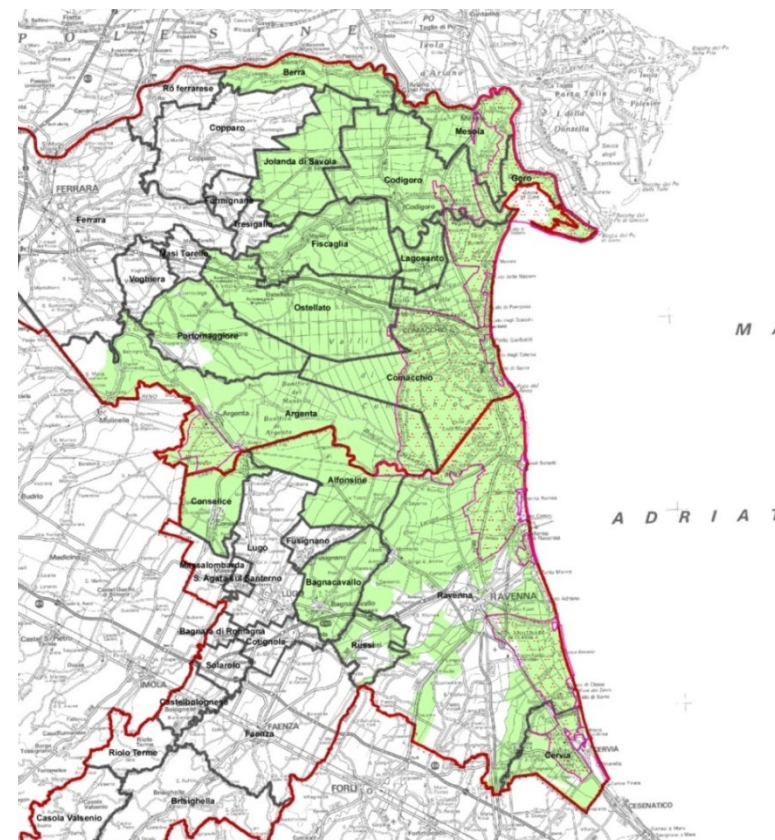
# 1. PARTNER GENERAL INFO

DELTA 2000 is located in the northern part of Italy between Venice and Florence, in the Po Delta Park



# 1. PARTNER GENERAL INFO

- As LAG Local Action Group , the area covered: **17** Municipalities in Po Delta area, included in Po Delta Park or Pre-park area.
- DELTA 2000 is a mixed company of, actually, **65 partners** representing the main local institutions and economic and social stakeholders, 40 are from the private sector (63% of the total) and 24 from the public sector.
- The total registered capital is **€ 150.000,00**.
- Number of employees: **n. 6**
- **Main economic activities of the area:** Agriculture and fish (14,44%); Industry (8,21%), Commerce and tourism (32,43%); Services (25,93%)
- **POPULATION:** 149.048
- **DENSITY OF POPULATION** (inhabitants/km<sup>2</sup>): 66,73
- **NATURA 2000 (SCI & SPA) SURFACE:** 56.420 ha = 26%% LEADER surface. N. 25 sites + n. 1 Regional Park (Po Delta Park)
- **POPULATION IN WORKING AGE:** 62.423
- **UNEMPLOYMENT RATE:** 7,02%



*Area Ferrarese: Argenta (\*), Berra, Codigoro, Comacchio, Fiscaglia, Goro, Jolanda di Savoia, Ligosanto, Mesola, Ostellato, Portomaggiore (\*); Area ravennate: Alfonsine, Bagnacavallo (\*), Cervia (\*), Conselice (\*), Ravenna (\*), Russi (\*) (\*) comuni parzialmente inclusi*

# 1. PARTNER GENERAL INFO

Emilia-Romagna Po Delta Park covers some of the most productive and rich in biodiversity areas in Italy. The Park includes the country's largest protected wetlands, areas of great ecological value. It is a territory rich in natural environments, housing hundreds of plant and animal species.



- Riserva della Biosfera – **Man and Biosphere UNESCO**
- 67.000 ettari di aree protette – **67.000 ha of protected areas!**
- Oltre 350 specie di uccelli – **more 350 birds species**
- 10 siti Unesco tra Ferrara il Delta del Po e Ravenna – **10 UNESCO sites among Ferrara, Po Delta and Ravenna**
- Una ricca biodiversità con zone umide, valli, boschi, pinete, dune e spiagge - **a rich biodiversity with wetlands, woods pine forests, dunes and beaches!**
- 610 km di ciclovie – **610 km of cycleways**
- Ospitalità ed enogastronomia di eccellenza – **Excellence of Hospitality, food and wine!**

## 2. CULTURAL HERITAGE SITES

### OSTELLATO :

- **Museum of Territory of Ostellato** illustrates the evolution of the earth and of humankind throughout history. It has obtained the Museums of Quality Recognition based on the standards and objectives of quality of the Emilia-Romagna Region.
- **San Vito Church** dedicated to Saints Vito, Modesto and Crescenzo and dating back to 1027, was built on the remains of an older building

### ALFONSINE

- **Monti House, Museum & Visitor Center – CEAS** point of information, dissemination and documentation of the Alfonsine Special Nature Reserve, museum of an Italian famous poet V. Monti
- **Museum of Senio's Battle** preserves documents relating to the times of World War II in Romagna. The main collections deal with weapons, uniforms, flags and the most peculiar objects used by soldiers.



# 3. NATURAL PATRIMONY SITES



## ANSE VALLIVE – OSTELLATO VALLEY

Only remains of the former marshes that once surrounded the village, saved from the most recent reclamation of the Valle del Mezzano and set up as an 'Animal Sanctuary'.

It is a freshwater **wetland biotope**, which is distinctive and unique in the Ferrarese lowland territory, above all for the quantity and variety of animals that populate it. There are no less than **150 species** of aquatic birds that nest or visit.

The reserve is **well equipped for various activities** such as birdwatching, walking, cycling, horse-riding, angling and canoeing



## RISERVA NATURALE DI ALFONSINE - NATURAL RESERVE

The reserve of Alfonsine is a little regional reserve with an extension of about 12 hectares. It was founded according to the Regional law n.11/88 of Emilia-Romagna Region in 1990, part of Po Delta Park.

**Tourist activities** : Natural paths (cycling and walking), birdwatching



# 4. INFO ON TOURISM

Even if the sites selected are Municipalities of Alfonsine and Ostellato , the promotion and valorization of natural and cultural resources and the sites in the Excover project will be realized considering its as part of the more wider **Po Delta area**, an homogeneous and uniform territorial and social context in which by more than 20 years DELTA 2000 in quality of Lag is acting and is working to promote in a systemic and integrated way an economic and sustainable tourist develop.


- Main present motivations for traveling to your town/region: tourism connected with park and environmental resources as slow tourism, excursion – cycling, birdwatching, school tourism (excursion & labo activities); enogastronomic tourism (events,etc) , cultural tourism.
- Present number of yearly overnights (stays) (year 2015): Alfonsine 3,26 overnights , Ostellato 2,04 overnights → in *Po Delta area increase of arrival , reeducation of overnight stays*
- Number of accommodations and beds in hotels and other hospitality solutions (B&B) : (year 2017) Alfonsine 4 hotel and 5 other hosp. Solutions; Ostellato 3 hotel and 7 other hospitality solutions → in *Po Delta area increase rural and other ospitaly solutions in the last twenty years.*
- Food supply: good number of restaurants, also typical; periodical events to promote and valorise typical enogastronomic products; numerous typical product in Po Delta area.

# 5. LOCAL PROJECT MANAGEMENT TEAM


Manager's Role	Name	Last Name	E-mail
Project	Angela	Nazzaruolo	<a href="mailto:info@deltaduemila.net">info@deltaduemila.net</a> ; <a href="mailto:angela.nazzaruolo@deltaduemila.net">angela.nazzaruolo@deltaduemila.net</a>
Financial	Paola	Palmonari	<a href="mailto:info@deltaduemila.net">info@deltaduemila.net</a> ; <a href="mailto:paola.palmonari@deltaduemila.net">paola.palmonari@deltaduemila.net</a>
Communication	Marzia	Cavazzini	<a href="mailto:info@deltaduemila.net">info@deltaduemila.net</a> ; <a href="mailto:marzia.cavazzini@deltaduemila.net">marzia.cavazzini@deltaduemila.net</a>
SC member	Mauro	Conficoni	<a href="mailto:info@deltaduemila.net">info@deltaduemila.net</a> ; <a href="mailto:mauro.conficoni@deltaduemila.net">mauro.conficoni@deltaduemila.net</a>



# PARTNERS CONTACTS

 PP8 DELTA 2000 SOC. CONS. A R.L.

 [info@deltaduemila.net](mailto:info@deltaduemila.net)

 +39 0533 57693-4

 [www.italy-croatia.eu/excover](http://www.italy-croatia.eu/excover)

*Thank you for your attention*