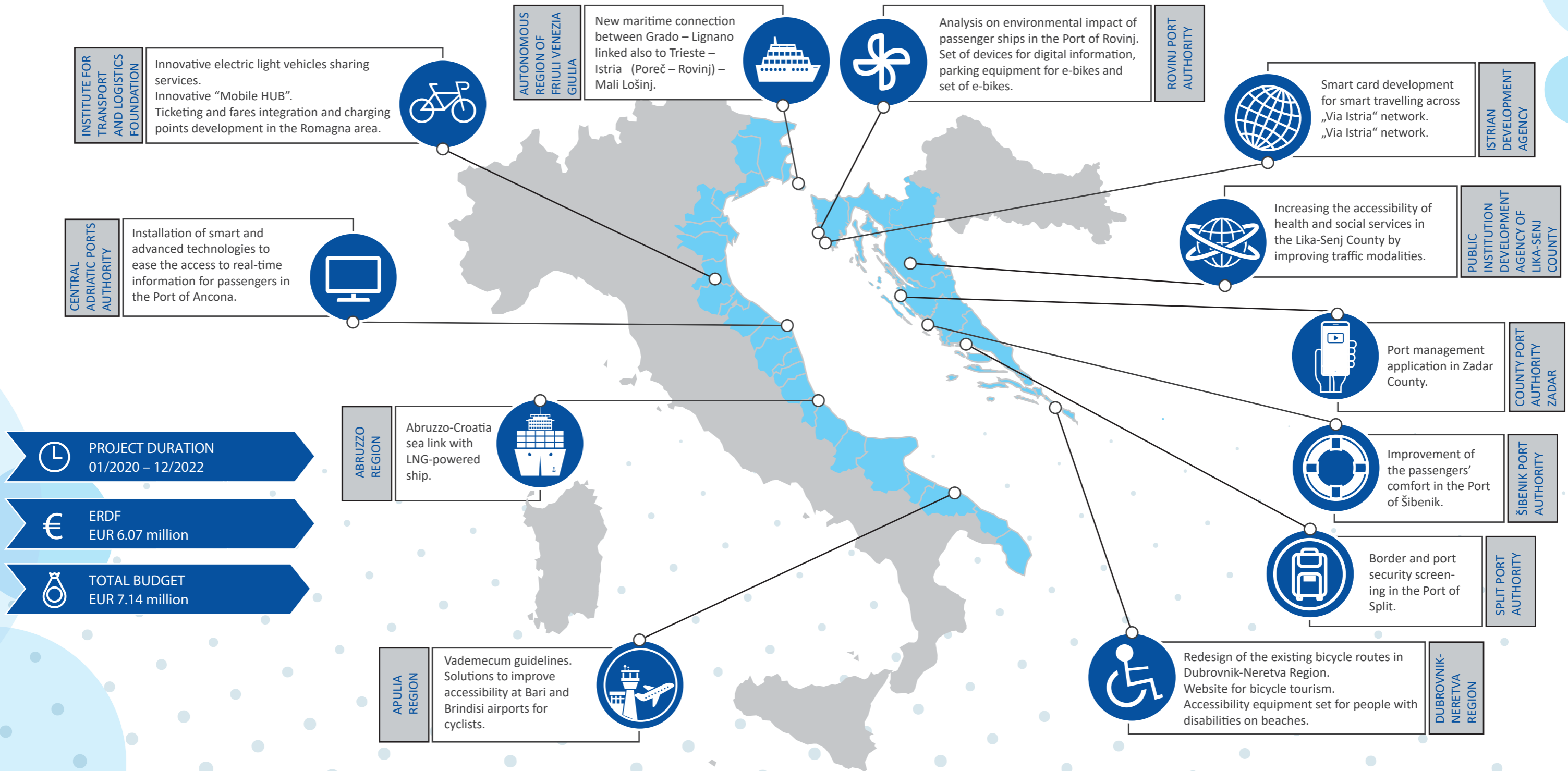


# Maritime and Multimodal Sustainable Passenger Transport Solutions and Services



**PROJECT DURATION**  
01/2020 – 12/2022

**ERDF**  
EUR 6.07 million

**TOTAL BUDGET**  
EUR 7.14 million

[www.italy-croatia.eu/mimosa](http://www.italy-croatia.eu/mimosa)

**CONTACT**  
Lead partner - Central European Initiative Executive Secretariat  
Project manager - Paolo Dileno, dileno@cei.int

Co-funded by the Interreg Italy-Croatia CBC Programme



CEI CENTRAL EUROPEAN INITIATIVE, REGIONE AUTONOMA FRIULI VENEZIA GIULIA, Università Ca' Foscari Venezia Dipartimento di Management, ITL ISTITUTO TRASPORTI E LOGISTICA, Central Adriatic Ports Authority, REGIONE ABRUZZO, REGIONE PUGLIA, REPUBLIC OF CROATIA Ministry of Regional Development and EU Funds, P3 regionale razvojna agencija, ida, POHOJSKI FAKULTET FACULTY OF MARITIME STUDIES University of Rijeka, HŽPP, LIRO, ZUPANIŠKA LUČKA UPRAVA ZADAR, ŠIBENIK PORT AUTHORITY