

Annex 4

EVALUATION DOSSIER FOR HERA INTERNATIONAL CULTURAL TOURISM ROUTE



ANNEX 4: EVALUATION DOSSIER FOR HERA INTERNATIONAL CULTURAL TOURISM ROUTE

This document reflects the author's views; the Programme Authorities are not liable for any use that may be made of the information contained therein.

EVALUATION DOSSIER FOR HERA INTERNATIONAL CULTURAL TOURISM ROUTE

Date of receipt of the application ¹	19 August 2019
Dossier number (N°/ year) ²	1/2019
Name of evaluated international Cultural Tourism Route	Hadriatica Romana - Routes Shaping a Unique Civilization
Implementing partners of the route	Applicant institution: ADSU TERAMO Partners: Zadar County Primorje-Gorski Kotar County Šibenik-Knin County TOURIST DESTINATION "ROMAGNA (PROVINCE OF FERRARA, FORLÌ-CESENA, RAVENNA, AND RIMINI)" COPE TERAMO
Countries included in the route	Croatia and Italy

Minimum criteria checklists - checklist for HERA Trademark international Cultural Tourism Route

The following are minimum criteria to be satisfied when proposing an international cultural tourism route:

1. Cultural heritage interpretation	Yes / No
Type of interpretation (at least one type of interpretation) <ul style="list-style-type: none"> ⊕ Interpretation for children - an educational character, the collection is adapted to children experience ⊕ Interpretation for older students - part of the school curricula to be demonstrated through literature/material, ⊕ Interpretation for disabled persons - according to the type of a handicap, it can be determined by a presentation suitable to special impairments (e.g. for the blind to be able to touch the exhibits). ⊕ Interpretation for smaller population groups, ethnic minorities or certain social groups (e.g. diaspora as a selective form of tourism) ⊕ Interpretation for tourists of special interests: researchers, ethnologists, anthropologists, architects, historians, botanists... 	Yes
Assessment of the experience by the relevant route stakeholders /quality of the interpretation (at least two criteria need to be addressed) <ul style="list-style-type: none"> ⊕ There is a multisensory experience – a holistic approach 	Yes

¹ Date provided by HERA Adriatic Heritage Association

² Number provided by HERA Adriatic Heritage Association

<ul style="list-style-type: none"> ⊕ Level of story interpretation ⊕ Authenticity ⊕ Unique interpretation ⊕ Language 	
2. Content	
Cultural content (at least two key cultural sites) <ul style="list-style-type: none"> ⊕ Public and religious buildings ⊕ Rural heritage ⊕ Monuments ⊕ Geographical sites ⊕ Historical sites ⊕ Archaeological sites ⊕ Industrial heritage 	Yes
Structural content (at least two structural contents) <ul style="list-style-type: none"> ⊕ Intangible heritage ⊕ Interpretive activities ⊕ Museums ⊕ Attractions ⊕ Private collections ⊕ Exhibition spaces ⊕ Workshops ⊕ Library ⊕ Centres 	Yes
Additional contents/Events – (at least two events during the tourist season; one in the off season) <ul style="list-style-type: none"> ⊕ Festivals ⊕ Gastro events ⊕ Multimedia centre ⊕ Music and dance events ⊕ Theatre ⊕ Other 	Yes
3. Hospitality services	
<ul style="list-style-type: none"> ⊕ At least two quality providers of food-related services (restaurant, traditional and other types of restaurant, bar, cafe etc.) 	Yes
<ul style="list-style-type: none"> ⊕ At least two different types of lodging services in the driving range of 30 min maximum (camp, private B&B, rural tourism, a minimum 3 star hotel, hostel etc.) 	Yes
4. Signalization and accessibility (at least three criteria needs to be addressed)	
<ul style="list-style-type: none"> ⊕ Accessibility by public and other types of transport ⊕ Tourist-info centre or some other type of an info point 	Yes

<ul style="list-style-type: none"> ⊕ Rest stops along the route (parking, vista, toilet, garbage depository etc.) ⊕ The route has a clear signalization ⊕ There is a way to monitor the circulation of visitors ⊕ There is a parking lot in the near distance – ⊕ The route is accessible for people with disabilities <p>It is important to emphasise that HERA routes must have visually unified signalisation that will help them make more recognisable.</p>	
5. Management and sustainability (at least one of the below plans need to be developed)	
<ul style="list-style-type: none"> ⊕ There is a clear strategic and action plan ⊕ There is a clear sustainability plan ⊕ There is a management plan ⊕ There is a Cost-benefit analysis (and Feasibility study if needed) ⊕ There is a marketing plan with visibility and branding aspects 	Yes
6. Participatory approach in researching and developing a theme (at least two criteria needs to be addressed)	
<ul style="list-style-type: none"> ⊕ The topic is researched and related to the region (at least one research and academic institution were involved). This criterion is important to encourage trans-disciplinary approach and inclusion of research community in the tourist activities. ⊕ The topic was developed in a participatory way including local community and local experts ⊕ There is a number of tour operators, touristic agencies and DMCs (if they exist) involved ⊕ There is an interdisciplinary approach (at least two disciplines, e.g. history and IT (multimedia) or gastro tourism, medieval fortifications and literature) ⊕ Co-funding of the project from different sources (tourist agency, county, city, municipality, international organisation) to show their commitment and a way of diversification of resources 	Yes
7. Horizontal themes³ (at least one horizontal theme needs to be addressed). Horizontal themes give an added value to the cultural route and are relevant to all cultural routes disregarding its theme, location and other criteria.	
<ul style="list-style-type: none"> ⊕ Ensure the inclusion of ethnic and social minorities ⊕ Level of IT and multimedia inclusion in the interpretation of cultural heritage (e.g. 3 D interpretation, holograms etc.) 	Yes

³ “Horizontal themes, in the context of EU funded work, are core principles of importance that cut across and have relevance to all areas of the work of EU funded projects”, SEE Guidance on Horizontal Themes:-Equal Opportunities; - Sustainable Development, SEE Transnational Cooperation Programme, 2007-2013, pg. 2

⊕ Innovation and social innovation in the interpretation, education and/or promotion of HERA cultural routes	
8. Capacity building requirements:	
⊕ At least one officially trained/certified heritage interpreter on staff/available in partner organizations	Yes
9. The cultural route theme is related to the Adriatic region	Yes
10. The theme has European added value (European theme)	Yes
11. Proposed route includes at least two partner countries from the Adriatic region	Yes
12. Route emphasises significance of the tangible and intangible cultural heritage, explains the historical significance, differences and commonalities within the Adriatic region (Interpretation)	Yes
13. Does route promote less known cultural heritage (hinterland, rural areas, industrial heritage, etc.)?	Yes

EVALUATION REPORT

Short description of the evaluated route. Please indicate main theme of the international route and key locations
<p>Since prehistoric times there have been strong links between civilizations and cultures of the western and eastern coast of the Adriatic. However, the first time both sides of Adriatic were united in one state was at the time of Roman Empire – the central part of Italy and east coast of the Adriatic which was largely formed by the Roman province of Dalmatia, extended by the coastline from Raša River in Istria to the Lješ, ancient Lissus in today's Albania. The Roman presence is solid in each partner area under the form of monuments, theaters, villas/houses, mosaics, ports, bridges, military places, archaeological parks, museums, information points, etc.</p> <p>The main theme of the International Cultural Route "Hadriatica Romana" is to present the monuments and political, economic and cultural processes that took place between both sides of the Adriatic coast during Roman domination.</p> <p>The key locations of the route are:</p> <p>CROATIA</p> <p>Zadar county</p> <p>The specific locations within Zadar County as an integral part of the route are Zadar, Nin, Nadin, and Aserija (near Benkovac – village Podgrađe).</p> <p>Primorje-Gorski Kotar County</p> <p>The specific locations within Primorje-Gorski Kotar County as an integral part of the route are located in the city of Rijeka (site Principa at Tarsatica), on the island of Krk (Omišalj, site Fulfinum Mirine) and on the island of Lošinj (Mali Lošinj, site Museum of Apoxyomenos).</p> <p>Šibenik-Knin County</p> <p>The specific locations within Šibenik-Knin County that will be integral part of the route are: Burnum, a</p>

Roman settlement, museum and amphitheatre; Scardona, a Roman settlement and important military port; Roman Varvaria, Bribirska glavica archeologic site/fort; Rider archeological site, settlement of indigenous Delmatae people; Magnum, Roman settlement on the road Aquileia – Dyrrachium; Great Mrdakovica, a roman archeologic site with functional cistern; Colentum, a settlement of indigenous community of people of Liburnia in the Roman period.

ITALY

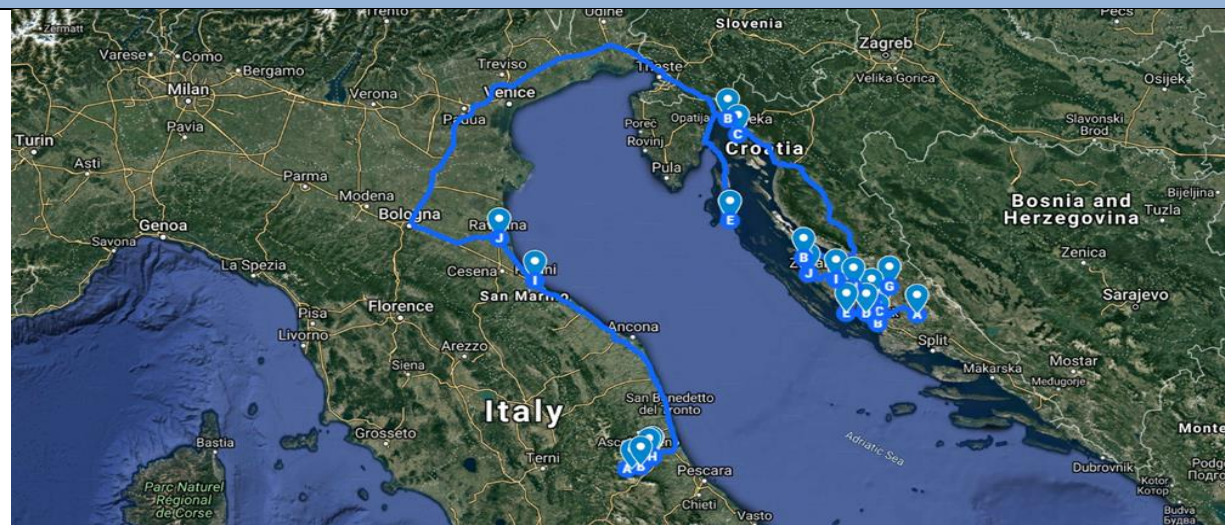
Abruzzo region – Teramo

The specific locations within Teramo as an integral part of the route are Roman Theater; Roman amphitheater; Necropolis of Ponte Messato; Domus and Mosaic of the Lion; Archeological site of Torre Bruciata; Archeological site of largo Madonna delle Grazie; Domus of Vico delle Ninfe; Melatino Palace.

Emilia Romagna Region – Ravenna and Rimini

The specific locations within Emilia Romagna region as an integral part of the route are: Ravenna and Rimini with their roman monuments / key cultural sites (the Ancient Port of Ravenna - Classe; House of the Surgeon in Rimini; ARimini Caput Viarum, etc.)

List key cultural / heritage sites included in the international route with list of connected services. Please indicate the country of listed sites and connected services.



CROATIA

Zadar County

Key cultural site 1: **Iadera (Zadar) with roman monuments:** Roman Forum with the temple in Zadar; Porta Triumphalis with roman fortifications and urban street system in Zadar; Different minor remains from the Roman period. **Connected services:** Accommodation; Food and beverage; City tour guides and heritage interpreters; Museums; Transport facilities

Key cultural site 2: **Aenona (Nin) with roman monuments:** Roman Forum with Temple in Nin; Roman Villa Urbana with mosaics in Nin; Different minor remains from the Roman period – roman houses,

fortifications, saltworks, etc. **Connected services:** Tour guide on the previous request; Accommodation; Food and beverage; Museum; Transport facilities

Key cultural site 3: **Nedinum (Nadin)** – connected services: Tour guide on request; Accommodation; Food and beverage; Transport facilities on request

Key cultural site 4: **Asseria** – connected services: Tour guide on request; Transport facilities on request

Šibenik Knin County

Key cultural site 1: **Burnum** (inside area of National park Krka) – roman settlement, museum, and amphitheater – connected service: Museum; Basic interpretation; National Park facilities; Bike Route

Key cultural site 2: **Scardona** (Skradin)– roman settlement and important military port: connected services: Tourist board; Tourist guides; Interpretation on sites; Authentic site; Religious site; Souvenirs; Restaurants; Caffe bars; Restroom; Accommodation; City Beach; Events; Excursion organizers/ specialized agencies; Bike route

Key cultural site 3: **Varvaria** (Bribir - Bribirska glavica) / archaeological site – connected services: Archeologic site; Authentic site; Basic interpretation; Religious site; Bike route

Key cultural site 4: **Rider** (Danilo Biranj) – connected services: Basic interpretation; Restaurant; Bike Route

Key cultural site 5: **Magnum** – roman settlement on the road Aquileia-Dyrrachium (village Umljanovići – Balina glavica - Close to city of Drniš) – connected services: Basic interpretation on-site; in the nearby Drniš: Tourist board; Tourist guides; Interpretation on sites; Souvenirs; Restaurants; Cafe bars; Restroom; Accommodation; Religious site; Gastro presentation; Rural households; Walking paths / educational paths; Bike routes

Key cultural site 6: **Velika Mrdakovica** – roman archaeologic site with functional cistern (hinterland of city of Vodice) – connected services: Basic interpretation; Bike Route; in the nearby city of Vodice: Tourist board; Tourist info centre; Tourist guides; Souvenirs; Restaurants; Caffe bars; Restroom; Accommodation; City Beach; Events; Excursion organisers / specialized agencies

Key cultural site 7: **Colentum** (Murter Kornati municipality – Island Murter) – settlement of indigenous community of people of Liburnia in the Roman period – connected services: Bike Route; Tourist board; Tourist guides; Interpretation on sites; Souvenirs; Restaurants; Caffe bars; Restroom; Accommodation; City Beach; Events; Excursion organisers / specialized agencies; Marina

Primorje-Gorski Kotar County

Key cultural site 1: **The Tarsatica Principia** (The site is located in the city center of Rijeka) - the main camp, the supply base and the starting point of the Claustra Alpia Iuliarum, today there is an Archaeological park – Connected services: accommodation; bars and cafe bars, restaurants, shops; tourist guides; interpretation; Tourist information center.

Key cultural site 2: **Fulfinum – Mirine** (island Krk near Omišalj) - an ancient Roman city. Mirine is the early Christian complex, a basilica – connected services: The closest service providers (accommodation, bars, restaurants, etc.) are in Omišalj. There are no service providers on site.

Key cultural site 3: **The Museum of Apoxyomenos** (in the centre of Mali Lošinj on island Lošinj) -

dedicated to only one exhibit - the bronze statue of a young athlete, the Apoxyomenos – connected services: accommodation; bar; restaurants; a souvenir shop at the museum; tourism board and info centre; tour guides.

Key cultural site 4: **old town Krk** (Krk island) - the urban centre of the island as early as 3000 years ago – connected services: accommodation; bar; restaurants; a souvenir shop at the museum; tourism board and info centre; tour guides; beach; well connected by means of public transport.

Key cultural site 5: **old town Osor** (on Cres island) – Roman town Apsoros / archaeological site – connected services: Accommodation; restaurants; tourist info; bars; toilets; beach; public transport facilities.

ITALY

Abruzzo region (Teramo)

Key cultural site 1: **Roman theatre** (Teramo) – connected services:

Key cultural site 2: **Roman amphitheater** (Teramo)

Key cultural site 3: **Necropolis of Ponte Messato** (Teramo)

Key cultural site 4: **Domus and Mosaic of the Lion** (Teramo)

Key cultural site 5: **Archaeological site of Torre Bruciata** (Teramo)

Key cultural site 6: **Archaeological site of largo Madonna delle Grazie** (Teramo)

Key cultural site 7: **Domus of Vico delle Ninfe** (Teramo)

Key cultural site 8: **Melatino Palace** (Teramo)

Connected services for all above indicated key cultural sites: Tourist information and reception center; Accommodation (Hotel: Abruzzi, Gran Sasso, Michelangelo, Rex, Sporting; B&B: Anfiteatro, Antica Interamnia, La Casetta; Farmhouses); Bars & restaurants; Shops; City tour guides and heritage interpreters; Transport facilities

Emilia Romagna region

Key cultural site 1: **Ancient Port of Ravenna – Classe**

Key cultural site 2: **Basilica of Sant'Apollinare in Classe (Ravenna)**

Key cultural site 3: **Surgeon's house in Rimini**

Key cultural site 4: **Tiberio's bridge in Rimini**

Key cultural site 5: **Augusto's arch in Rimini**

Key cultural site 6: **Amphitheatre in Rimini**

In both Ravenna and Rimini there are different **connected services**: Accommodation; Food and beverage; City tour guides and heritage interpreters; Museums; Transport facilities

Describe how evaluated international cultural tourism route theme is related to the Adriatic region

A common denominator among the partners/territories of both coasts on the Adriatic sea is based on

Roman Routes. The focus is not only on physical Roman roads (Vias Romanas) but also on presenting the sites of each partner area in terms of social, economic and cultural processes that took place between both sides of the Adriatic coast during Roman domination. The Adriatic Roman Routes are not only the military trails but also those of merchants' and peoples' movements locally and to a wider span. Along with them, a great civilization is born, bringing common social, cultural, religious, behaviors and values, a vision of integration more than of conquest or division, of peace more than war.

Indicate how the theme of evaluated international cultural tourism route promotes European added value (European theme)

As a transnational route, Hadriatica Romana spreads different universal (and European) values (common heritage and culture; education; tolerance, etc.) bringing together different experiences in order to discover shared historical elements based on the Romans in the Adriatic area. In line with the Faro Convention, Hadriatica Romana also promotes the importance of local citizens and their strong connection with their heritage in the creation of a common European narrative. The participatory process has included all the relevant stakeholders from tourism and cultural heritage sectors (local authorities, public institutions, associations, SMEs, universities...).

Describe and annex photos proving that international cultural route satisfies defined criteria for HERA award:

1. Cultural heritage interpretation

Indicate which type of cultural heritage interpretation is available in evaluated international CTR. Describe how cultural heritage interpretation is provided and for which target groups.

All sites are dating back to ancient times or late ancient times. The joint interpretation still has to be developed, so at the moment is available heritage interpretation implemented by local tourism guide (additionally trained according to HERA CAPACITY BUILDING STANDARD SPECIFICATIONS) on local segments of International CTR Hadriatica Romana.

The entire route is suitable for different target groups. It mostly includes walks and sightseeing, therefore it is both for children, families, younger and older people, as well as for different types of individuals and groups (ex: hikers&walkers, mountain bikers, students, archaeologists, researchers, ...). Additionally, many of the sites fit best popular and school targets, they have scientific basements but show the history in an easy and involving way.

Summarizing main Target groups are:

- Population (individuals and families) aged 40+ with a medium-to-high spending capacity and educational level;
- Schools, students
- Professional groups

Although that overall program of the visit of ICTR would take at least 10 days, it can be also divided into local thematic journeys connected with the selected roman sites – without losing anything in the cultural experience. Each sub-destination is ready to make memorable cultural experiences and present their rich Roman heritage – part of joint ICTR.

2. Content

Indicate number and name of cultural content (key cultural site) included in the evaluated international CTR⁴

(e.g. 2 religious buildings – St. Donat church; St. Mary church etc.)

CROATIA

Zadar County – key cultural sites: Zadar, Nin, Nadin, and Asseria (near Benkovac)

- ⊕ **Public and religious buildings (N° 3):** Roman Forum with Temple in Zadar; Porta Triumphalis with roman fortifications and urban street system in Zadar; Roman Forum with the temple in Nin
- ⊕ **Monuments (N° 11):** Roman Forum with the temple in Zadar; Porta Triumphalis with roman fortifications and urban street system in Zadar; Different minor remains from the Roman period – roman houses, aqueduct, etc. in Zadar; Roman collection in Archaeological museum in Zadar; Museum of Ancient glass in Zadar – Roman glass collection; Roman Forum with Temple in Nin; Roman Villa Urbana with mosaics in Nin; Different minor remains from the Roman period – roman houses, fortifications, saltworks etc.; Roman collection in Archaeological Museum in Nin; Nedinum fortress – municipium; Asseria - Liburnian and Roman settlement; Roman archaeological collection in national museum Benkovac
- ⊕ **Geographical sites (N° 2):** Nature Park Vransko jezero with different smaller roman monuments inside and around the park; Nin salt works as Natura 2000 bird habitat (saltworks from the Roman period)
- ⊕ **Historical sites (N°4):** Zadar; Nin; Nadin and Asseria
- ⊕ **Archaeological sites (N° 8):** Roman Forum with the temple in Zadar; Porta Triumphalis with roman fortifications and urban street system in Zadar; Different minor remains from the Roman period – roman houses, aqueduct, etc. in Zadar; Roman Forum with Temple in Nin; Roman Villa Urbana with mosaics in Nin; Different minor remains from roman period – roman houses, fortifications, saltworks etc.; Nedinum fortress – municipium; Asseria - Liburnian and Roman settlement

Šibenik-Knin County

- ⊕ **Public and religious buildings (10):** Church of Holy Virgin Mary in Scardona, Church of St. Spiridon in Scardona, Church of Saint Petka in Scardona, Church of St. Jere in Scardona, Church of St. Mary in Bribirska glavica, Church of St. Roko in Drniš, Church of St. Mary of Ružarija in Drniš, Church of St. Daniel in Danilo/Rider, Church of St. Mary of Gradina close to Colentum in Murter, Church of St. Joakim and Ana in Bribirska Glavica
- ⊕ **Rural heritage (9):** Rural household Okit near Velika Mrdakovica, Rural households Eko-house Panorama, Robeko, Skradinske delicije and Pulić household close to Scardona, Rural household ETNOLAND close to Scardona and Drniš, Ethno Skelin and Galić rural household close to Burnum, Rural household Kuća kamena close to Drniš
- ⊕ **Monuments (5):** Monument to Fallen soldiers in Vodice close to Velika Mrdakovica, City of Scardona is monument itself protected by Ministry of Culture, Monument to Murter

⁴ Delete rows with no cultural content

shipbuilders close to Collentum, Monument Well of Life in Drniš, Ottoman Minaret monument in Drniš

- ⊕ **Geographical sites (2):** National park Krka – upper and middle stream
- ⊕ **Historical sites (6):** Bribirska glavica, Burnum, Magnum, Scardona, Colentum, and Danilo
- ⊕ **Archaeological sites (7):** Velika Mrdakovica, Bribirska glavica, Burnum, Magnum, Scardona, Colentum, and Danilo

Primorje-Gorski Kotar County

- ⊕ **Public and religious buildings (N°4):** Assumption of the Blessed Virgin Mary Church in the city of Rijeka; Mirine (Early Christian complex) in Omišalj, the island of Krk; Chapel of Saint Mary - Osor, island of Lošinj; Cathedral of the Assumption of the Blessed Virgin Mary - city of Krk
- ⊕ **Monuments (N° 1):** Roman arch in the city of Rijeka;
- ⊕ **Geographical sites (N° 3):** Roman harbor Tarsatica – Rijeka; Sepen Bay – near Omišalj, Island of Krk; “Kaunada” channel – Osor
- ⊕ **Historical sites (N° 8):** Principia Archaeological park – Rijeka; Užarska street (decumanus) – Rijeka; Roman mosaic on the ground floor (Department for Conservation) – Rijeka; Fulfinum / Mirine; Roman city walls – Krk; The Temple of Venus – Krk; Roman raster of City of Krk; City of Osor, island of Lošinj
- ⊕ **Archaeological sites (N° 3):** Principia Archaeological park – Rijeka; Fulfinum / Mirine; the City of Osor with cemetery

ITALY

Abruzzo region - TERAMO

- ⊕ Public and religious buildings (N° 1):
 1. Cathedral of Teramo
- ⊕ Monuments (N° 1):
 1. Melatino Palace
- ⊕ Archaeological sites (N° 7):
 1. Roman Theater
 2. Roman amphitheater
 3. Necropolis of Ponte Messato
 4. Domus and Mosaic of the Lion
 5. The archeological site of Torre Bruciata
 6. The archeological site of largo Madonna delle Grazie
 7. Domus of Vico delle Ninfe

Emilia Romagna Region – Ravenna and Rimini

- ⊕ **Public and religious buildings (N° 6):**
 - the ancient Port of Ravenna;
 - Basilica of Sant’Apollinare in Classe(Ravenna);
 - Surgeon’s house in Rimini;
 - Tiberio’s bridge in Rimini;
 - Augusto’s arch in Rimini;
 - Amphitheatre in Rimini.
- ⊕ **Monuments (N° 6):**
 - the ancient Port of Ravenna;

- Basilica of Sant'Apollinare in Classe;
- Surgeon's house in Rimini;
- Tiberio's bridge in Rimini;
- Augusto's arch in Rimini;
- Amphitheatre in Rimini.

⊕ **Historical sites (N°2):**

- Ravenna;
- Rimini

⊕ **Archaeological sites (N° 6):**

- the ancient Port of Ravenna;
- Basilica of Sant'Apollinare in Classe;
- Surgeon's house in Rimini;
- Tiberio's bridge in Rimini;
- Augusto's arch in Rimini;
- Amphitheatre in Rimini.

Photos of cultural content included in the route: Annex 1.

Indicate number and name of structural content part of the evaluated international CTR⁵
(e.g. 2 intangible heritage – Pag lice; traditional singing, etc.)

CROATIA

Zadar County

- ⊕ **Interpretive activities (N° 2):** Guided visits of the route and of museums included in the route upon request – all year round; Free costume guided tours in Nin – during tourism season – occasionally
- ⊕ **Museums (N° 4):** Roman collection in Archaeological museum in Zadar; Museum of Ancient glass in Zadar – Roman glass collection; Roman collection in Archaeological Museum in Nin; Roman archaeological collection in national museum Benkovac
- ⊕ **Attractions (N° 1):** Glass blowing in Museum of Ancient glass in Zadar – all year round
- ⊕ **Exhibition spaces (N° 6):** Exhibition space in Archaeological museum in Zadar; Exhibition space in the National Museum in Zadar (different premises); Museum of Ancient glass in Zadar; Exhibition space in Archaeological Museum in Nin; Exhibition space in Baroque House in Nin; Exhibition space in national museum Benkovac
- ⊕ **Workshops (N° 4):** Different workshops on themes related to Roman history are organized in all year round in The archaeological museum in Zadar; Museum of Ancient glass in Zadar; Archaeological Museum in Nin; National museum Benkovac
- ⊕ **Library (N° 4):** Public Library in Zadar; Scientific library in Zadar; Public Library in Nin; Public library in Benkovac (for the area of Nadin and Asseria (village Podgrađe)

⁵ Delete rows with no structural content

- ⊕ **Centres (N° 3):** City center in Zadar City Centre in Nin; City Centre in Benkovac (area of Nadin and Podgrađe – Asseria)

Šibenik-Knin County

- ⊕ **Intangible heritage (3):** rural authentic households, traditional gastronomy including Prosciutto from Drniš, drywall construction heritage close in Vodice area and all across Šibenik-Knin County
- ⊕ **Interpretive activities (1):** Association of tourist guides of Šibenik “Mihovil” who develop various programs of a different interpretation of the area
- ⊕ **Museums (2):** Drniš City Museum and Archeological collection Burnum
- ⊕ **Attractions (1):** National park Krka next to Scardona
- ⊕ **Private collections (1):** Private collection in Etnoland Dalmati
- ⊕ **Exhibition spaces (2):** Eko Kampus Krka in Puljane and Interpretation center Krka – well of life
- ⊕ **Workshops (6):** Mini park rangers workshops, 3R – Reduce, reuse, recycle, Give more for the bats, I love to wear green workshop, A drop for the falls and the Wonderous world of dragonflies and Little park rangers workshop
- ⊕ **Centres (1):** Visitor center in National park Krka

Primorje-Gorski-Kotar County

- ⊕ **Intangible heritage (N° 5):** Folk costume; Dry stone walls; traditional singing; Vegliano dialect; Wool felting
- ⊕ **Interpretive activities (N° 2):** Ancient days – Archeological Park Mirine; Wool felting
- ⊕ **Museums (N° 4):** Maritime and History Museum of the Croatian Littoral – Rijeka; Lapidarium – Omišalj; The archaeological collection Osor – Lapidarium; Museum of Apoxyomenos – Lošinj
- ⊕ **Attractions (N° 1):** Apoxyomenos
- ⊕ **Private collections (N° 3):** The private archaeological collection in Volsonis – Krk; Gallery Fortis; Roman mosaic on the ground floor of the Vašilić house in Krk
- ⊕ **Workshops (N° 2):** Wool felting workshop on the island Cres by Ruta; Kids boatbuilding workshop - Lošinj
- ⊕ **Centres (N° 2):** The Blue World Institute of Marine Research and Conservation – Mali Lošinj; Beli Visitor Centre and Rescue Centre for Griffon Vultures – Beli, Island of Cres

ITALY

Abruzzo region – Teramo

- ⊕ Interpretive activities (N° 1):
 1. Roman amphitheater
- ⊕ Museums (N° 2):
 1. Civic Archaeological Museum "F. Savini"
 2. Municipal Art Museum "Pinacoteca Civica"

Emilia Romagna Region – Ravenna and Rimini

- ⊕ **Interpretive activities (N° 2):**
 - Guided visits of the route and of museums included in the route upon request – all year round

- ⊕ **Museums (N° 3):**
 - Roman collection in National museum in Ravenna
 - CLASSIS Museum of the City and the Territory
 - Roman collection in Municipal museum in Rimini
- ⊕ **Exhibition spaces (N° 5):**
 - Exhibition space in the National Museum in Ravenna
 - Exhibition space in CLASSIS Museum of the City and the Territory
 - Exhibition space in Municipal museum in Rimini
 - Exhibition space of the Municipality of Ravenna
 - Exhibition space of the Municipality of Rimini
- ⊕ **Workshops (N° 3):** Different workshops on themes related to Roman history are organized in all year round in:
 - Roman collection in National museum in Ravenna
 - CLASSIS Museum of the City and the Territory
 - Roman collection in Municipal museum in Rimini
- ⊕ **Library (N° 4):**
 - Public Library in Ravenna;
 - Public Library in Rimini;
- ⊕ **Centres (N° 2):**
 - City centre in Ravenna
 - City Centre in Rimini

Photos of structural content included in the route: Annex 2

Specify additional contents/events organised on the international route and indicate period of organisation⁶:

CROATIA

Zadar County

- ⊕ **Festivals (N°; 2):** aside different events organised in the territory, **two festival** related to the theme of the route are indicated - **“Days of antiquity”** (Antički dani) in Zadar – cycles of events (presentations, workshops, performances, etc.) organized by students of Archaeology on different locations in Zadar; period: end of May – **beginning of June; Festival of the Sun and Light in the Church of the Holy Cross in Nin – first day of summer.** The church was built on the location where several roman houses were found. This event is based on the evaluation of the astronomic and the architectural importance of the Church of the Holy Cross.
- ⊕ **Gastro events (N° 4):** **Nin's šokolijada (Šokol festival)** – July. Competition in preparation of Šokol – a dried meat product of a recognizable taste; **Vinfest Benkovac** – July. Event promoting local wines and gastronomy; **Snail speed festival (gastro event Puževim korakom)** – July. Event promoting different dishes based on snails; **Festival of anion “Luka i igara” near Vransko jezero** (Near Asseria) – end of September.
- ⊕ **Multimedia centre (N° 1):** Visitor Centre Mali arsenal Zadar – open all year round. VC presents

⁶ Delete rows with no additional content / events

the urban development of Zadar within history.

- ⊕ **Other (specify) (N°; period): European bird counting day in salt fields in Nin** – on the first weekend in early October. It is an ecological action of the educational character whose primary motive is to make citizens and visitors aware of the necessity of preserving biodiversity, especially bird species. The salt fields are located near the historical center of Nin and extending over 55 hectares.

Šibenik-Knin County

- ⊕ **Festivals (10):** Burnum ides, The sounds of the River Festival, Night of the bats, Green eye festival in National park Krka, Summer bacchanalia festival on Velika Mrdakovica, Fine wine festival in Scardona, Agrotourism festival in Scardona, Drniš Cheese festival, Drniš Prosciutto festival, Free music festival in Murter, close to Colentum
- ⊕ **Gastro events (5):** Summer bacchanalia festival in Velika Mrdakovica, Fine wine festival in Scardona, Agrotourism festival in Scardona, Drniš Cheese festival, Drniš Prosciutto festival
- ⊕ **Multimedia centre (1):** National park Krka presentation center
- ⊕ **Music and dance events (3):** The sounds of the River Festival, Summer bacchanalia festival on Velika Mrdakovica, Free music festival in Murter, close to Colentum
- ⊕ **Theatre (2):** Burnum ides, Summer bacchanalia festival on Velika Mrdakovica

Primorje-Gorski Kotar County

- ⊕ **Festivals (N° 3):** Ancient days – Archeological Park Mirine, July; Osor Musical Evenings, July/August; Festival “Apoxymenos on the Island of Vitality”, April
- ⊕ **Gastroevents(N° 2):** Lošinj Cuisine Festival, April / May; Ancient days – Archeological Park Mirine, July
- ⊕ **Multimedia centre (N° 1):** Museum of Apoxymenos – Lošinj, a whole year
- ⊕ **Music and dance events (N° 6):** Krk music fest, June; Klape (a cappella vocal bands) in the piazza, Mali Lošinj, July; Jazz festival, Mali lošinj, July / August; Osor Musical Evenings, July / August; Rijeka Summer Nights, during the summer; Summer on Gradina, Rijeka, during the summer
- ⊕ **Theatre(N° 3):** Rijeka Summer Nights, during the summer; Festival of Popular Theater, Omišalj, during the summer; Krk Summer Events, July / August
- ⊕ **Other (specify) (N° 5):** St. Vitus' Days, Rijeka, June; Fiumanka (one of the largest regattas on the Adriatic), Rijeka, June; Rijeka Carnival, winter; Rijeka ECoC 2020; “Lošinj sails around the World” Festival, September

ITALY

Abruzzo Region – Teramo

- ⊕ **Gastro events (N° 1):**
 1. Le virtù (May)
- ⊕ **Other (events) (N° 3):**
 1. "Desolata" procession (Holy Friday)
 2. Interamnia World Cup (July)
 3. FAI Days discovering hidden treasures, Italian Environmental Foundation (spring, autumn)

Emilia Romagna Region – Ravenna and Rimini

- ⊕ **Festivals (N°; 2):** aside different events organised in the territory, two festival not strictly related to the theme of the route are indicated
 - **Ravenna Festival** in Ravenna – is a summer festival of opera and classical music (as well as dance, jazz, ethnic, musical theater, ballet, sacred music, electronic music, drama, film, plus conventions and exhibitions) held in the city of Ravenna, Italy and the surrounding area each June and July.
 - **Sagra Musicale Malatestiana** in Rimini – It is the oldest and most prestigious event in the Rimini area. In its more than 60 editions it has hosted the greatest musicians in the world.

- ⊕ **Gastro events (N° 2):**
 - **Truck'n'Food** – May. An event dedicated to quality street food, including gourmet dishes and traditional recipes expertly blended in a truly unique cocktail.
 - **Al Meni** – June. Great chefs become street cooks by manipulating the products of our land; young designers produce ideas with their own hands; farmers and winemakers offer their excellence. All this is Al Mèni the things done with the hands and with the heart.

- ⊕ **Multimedia centre (N° 2):**
 - Ancient Port Visitor Center (Ravenna)
 - ARimini caput Viarum Visitor Center (Rimini).

- ⊕ **Theatre (N°2):**
 - Alighieri Theater (Ravenna)
 - Galli Theater (Rimini).

3. Hospitality services

Indicate names and annex photos of at least two (2) food-related services present on the evaluated route (Indicate per country):

There are different food and beverage services on the international cultural tourism route Hadriatica Romana in all sub-destinations. Some food and beverage service in the vicinity of each key cultural sites in sub destinations are listed hereinafter. However, it will depend on travel agencies or other bodies that will offer visiting program of the ICTR which one will be included in the program:

CROATIA

Zadar County

- ⊕ **ZADAR:** Restaurant 5 bunara

- ✦ **NIN:** Kraljevski vinogradi – The Royal Vineyards (wine tasting and restaurant)
- ✦ **NADIN:** Agroturizam Odžaković; Wine Škaulj
- ✦ **Near Asseria:** Agro cooperation MAS-VIN

Šibenik-Knin County

- ✦ Konoba Okit Rural household near Velika Mrdakovica,
- ✦ Etnoland and Kuća kamena close to Drniš.

Primorje-Gorski Kotar County

- ✦ Caffè “Bar Bar” in Rijeka
- ✦ Bistro pizzeria “Maslina na zelenom trgu” in Rijeka
- ✦ Restaurant “Primorska konoba” in Rijeka
- ✦ Konoba “Na Kantunu” in Rijeka
- ✦ Konoba-pizzeria “Bracera” in Rijeka
- ✦ Bar & Pizzeria “Volsonis” in Krk
- ✦ Konoba “Ulika” in Omišalj
- ✦ Restaurant “Rivica” in Njivice
- ✦ Restaurant “Nostromo” in Malinska
- ✦ Konoba “Nonina kuhinja” in Osor
- ✦ Restaurant “Bocca Vera” in Mali Lošinj
- ✦ Konoba “Chalvien” in Mali Lošinj
- ✦ Konoba “Cigale” in Čikat

ITALY

Abruzzo region – Teramo

- ✦ Bar: Caffè Des Artistes, Caffè Grande Italia
- ✦ Ristoranti: La Cantina di Porta Romana, La Granseola

Emilia Romagna Region – Ravenna and Rimini

- ✦ **Ravenna: Ristorante Il Brutto Anatroccolo**
- ✦ Rimini: Due Come Noi Bistrot

Photos of at least two (2) food-related services present on the evaluated route (Indicate per country):
Annex 3

Indicate type, names and annex photos of at least two (2) lodging services (driving range of 30 min maximum - camp, private B&B, rural tourism, a minimum 3 star hotel, hostel etc.) present on the evaluated route. (Indicate per country)

There are different Accommodation services on the international cultural tourism route Hadriatica Romana in all sub-destinations. Some of them are listed here in after, but it will depend on travel agencies or other bodies that will offer visiting program of the route which one will be included in the program:

CROATIA

Zadar County

- ⊕ **ZADAR:** Bastion Heritage Hotel - Relais & Châteaux – 4-star hotel
- ⊕ **NIN:** Zaton Holiday Resort – apartments 4*, camping, mobile homes, and glamping
- ⊕ **NADIN:** Holiday rentals - Rural house Anđelkovi dvori
- ⊕ **NEAR ASSERIA:** Holiday rental – Rural house Villa Asseria

Šibenik-Knin County

- ⊕ Hotel Colentum in Murter and
- ⊕ Hotel Park Drniš

Primorje-Gorski Kotar County

- ⊕ Hotel Plava Laguna Bonavia in Rijeka
- ⊕ Hotel Continental in Rijeka
- ⊕ Private accommodation in all Primorje-Gorski Kotar County
- ⊕ Hotel Beli kamik in Njivice
- ⊕ Campsite Njivice
- ⊕ Flora green villas in Njivice
- ⊕ Hotel Dražica in Krk
- ⊕ Hotel Aurora in Mali Lošinj
- ⊕ Campsite Kupari nearby Mali Lošinj
- ⊕ Hotel Malin in Malinska
- ⊕ Hotel Koralj in Krk

ITALY

Abruzzo Region – Teramo

- ⊕ Hotel: Abruzzi, Gran Sasso, Michelangelo, Rex, Sporting.
- ⊕ B&B: Anfiteatro, Antica Interamnia, La Casetta, Farmhouses.

Emilia Romagna Region – Ravenna and Rimini

- ⊕ Ravenna: Hotel Classensis - Basilica di Sant'Apollinare in Classe 3*
- ⊕ Rimini: Hotel Card International 4*

Photos of at least two (2) lodging services present on the evaluated route: Annex 4

4. Signalization and accessibility

Indicate how evaluated International CTR is accessible; Indicate existence and locations of info points, rest stops, signalization (unified), parking, accessibility for people with disabilities.

Evaluated international CTR “Hadriatica Romana” satisfies the criteria of the signalization and accessibility assessment. All key cultural sites in each sub destination of the route are accessible by public and other types of transport, it includes TIC /info centers/visitor centers, rest stops along the route and a parking lot in the near distance. All key cultural sites in Croatian and Italian sub-segments of

the route have a clear signalization while specific project signalization will be posted upon receiving HERA TM. Accessibility for people with disabilities is possible throughout the whole route.

5. Management and sustainability

Indicate which type of management and sustainability documents are developed. Indicate how these documents are available for consultation and where. Indicate name of interviewed responsible person/staff of the route.

A document "Marketing plan and branding aspects – outline and recommendations" has been developed for the ICTR Hadriatica Romana. In this way ICTR formally satisfies requested HERA criteria, but however for the purposes of proper MANAGEMENT AND MARKETING POSITIONING, it should be additionally elaborated for entire route as well as for each sub-destination (local segment of the ICTR Hadriatica Romana). The document is available on the request ADSU Teramo

6. Participatory approach in researching and developing a theme

Describe how the participatory process criteria were satisfied in development of the route. Who was included in the process? Specify number and names of tour operators, touristic agencies and DMCs involved in process (if included). Is development of the route co-funded, and by whom?

The idea of this route was created by the scientific committee within the HERCULTOUR project, a committee composed of one representative from every project partner. Besides the scientific members, in the participatory process on the local level were involved all the major stakeholders that are important for sustainability of the route, such as local authorities, tour guides, representatives of local and regional travel agencies, tourist boards, etc.

- **Zadar County:** Tour operators / tourist agencies (VIBAK, Guide4all, Iliria travel, Shuttle tours, Voyages, Nin turizam ltd, ZZUUM active vacation, Turistički obrt Sonja, TA Distinct travel, Turistički obrt Ana Bašić Alerić, Šinchorina, Zadar Tourist Guides Association - "Donat"), DMCs, tourism boards (Nin and Pag) and public institutions (Zadar County and National Museum Zadar)
- **Šibenik-Knin County:** Tourist boards and regional agencies; local art historians, archaeologists, tourist guides association from Šibenik, economists, representatives of institutions for environment protection and representatives of National park Krka
- **Primorje – Gorski Kotar County:** representatives of municipalities and cities covered by the route, together with the stakeholders from the museums, tourist boards, and other relevant institutions
- **Abruzzo region (Teramo):** local travel agencies, local NGOs in the field of culture and eco-tourism; University of Teramo
- **Emilia Romagna Region (Ravenna and Rimini):** local authorities, Ravenna Turismo and Rimini Turismo (both included within Romagna Tourism Destination, the Regional tourism body), representatives of local and regional travel agencies, tourist boards,

Development of the route was cofounded by European Union via the INTERREG program and HERCULTOUR project.

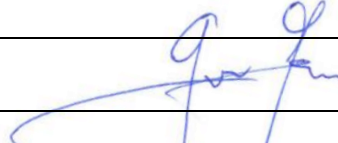

7. Horizontal themes⁷. Horizontal themes give an added value to the cultural route and are relevant to all cultural routes disregarding its theme, location and other criteria.

⁷ "Horizontal themes, in the context of EU funded work, are core principles of importance that cut across and have relevance to all areas of the work of EU funded projects", SEE Guidance on Horizontal Themes: -Equal Opportunities; - Sustainable Development, SEE Transnational Cooperation Programme, 2007-2013, pg. 2

<i>Which horizontal theme is addressed in the project?</i>
<p>Program of the visit of the all local segments of Hadriatica Romana route make no discrimination for any ethnic and social minorities – it is tailored for all without any ethnic and social discrimination since interpreters Roman history – as multi-cultural civilization.</p> <p>In each sub-destination exists IT and multimedia interpretation (Mali Arsenal Visitor Centre in Zadar County; National park Krka presentation centres in Šibenik-Knin County; Museum of Apoksiomen in Primorje-Gorski Kotar County; augmented reality in Teramo “from Interamnia to Amiternum”; Ancient Port Visitor Center (Ravenna) and ARimini caput Viarum Visitor Center (Rimini). In all local segments of the route, there are trained cultural interpreters that interpret roman history in an innovative and tailored way.</p>
8. Capacity building requirements: <i>Annex list of trained/certified heritage interpreter on staff/available in implementing partner organizations (indicate per country/local partner institution)</i>
<p>Heritage interpretation of the route is implemented by local tourist guides additionally trained according to HERA CAPACITY BUILDING STANDARD SPECIFICATIONS.</p> <p>List of trained Heritage interpreters: Annex 5</p>
9. Indicate how the evaluated route emphasises significance of the tangible and intangible cultural heritage, explains the historical significance, differences and commonalities within the Adriatic region (Interpretation)
<p>As it was stated in the application form for HERA ICTR award - Tangible and Intangible Cultural Heritage of Hadriatica Romana are indivisible – without the intangible heritage, it is not possible to understand the values of the tangible heritage and vice-versa. Regarding cited, trained Heritage Interpreters (trained according HERA standard specifications) are having a key role in explanation of historical significance, differences, and commonalities within the Adriatic region. At the moment there is no unified interpretation of entire route, but local heritage interpreters provide interpretation through storytelling and in that way explains importance of roman heritage for the development of cultural identity in Adriatic area. Additionally, this interpretation is strengthened with museum exhibits (presented in traditional way and with use of multimedia and guides). Also multimedia presentations in local visitor centers significantly contribute to the valorisation of common Roman legacy – tangible and intangible.</p>
10. Indicate how less known cultural heritage (hinterland, rural areas, industrial heritage, etc.) are promoted on the route.
<p>Less known cultural heritage as part of ICTR is promoted together with already known key cultural sites – roman monuments. Since most of “known” Roman heritage is located mainly on the developed (costal) destination, the program invites visitors to see some still undiscovered Roman archaeological sites that are mostly located in the hinterland. In this way, ICTR influents tourism flows and their spatial distribution within the area and contributes to the reduction of pressure on coastal (highly developed destinations) and stimulates the development of rural / hinterland areas – still underdeveloped in terms of cultural tourism.</p>

RECOMMENDATION FOR HERA TM AWARD

Is the route recommended for awarding with HERA Trademark for international Cultural tourism route
Yes
If no, please specify the reasons and give main recommendation for improvement.

Evaluator:	Krešimir Grubić
Place and date of evaluation:	Šibenik, 9 th September 2019
Signature of evaluator	
Stamp	

Annex 1. Cultural content (key cultural site) included in the evaluated international CTR

CROATIA – ZADAR COUNTY



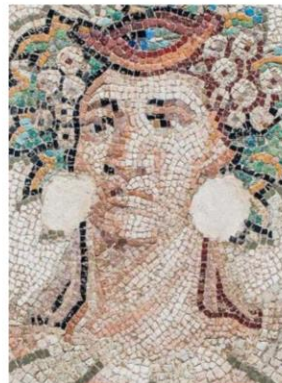
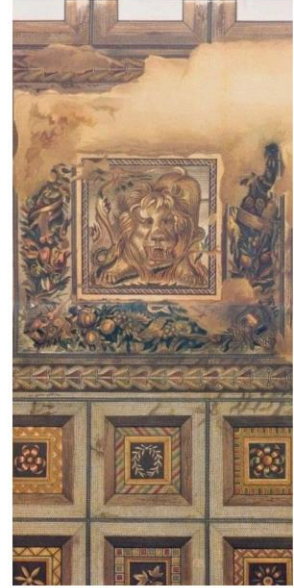
CROATIA: Šibenik – Knin County



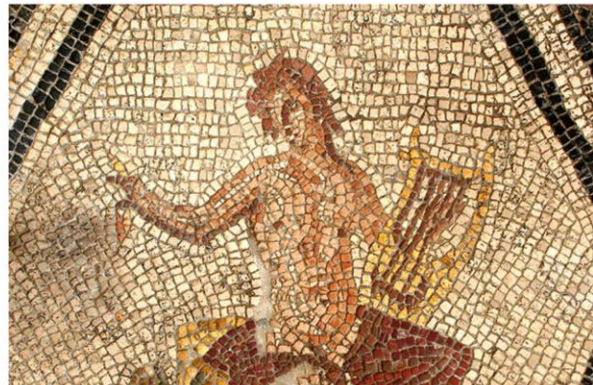
CROATIA – Primorje-Gorski Kotar County



ITALY: Abruzzo region – Teramo

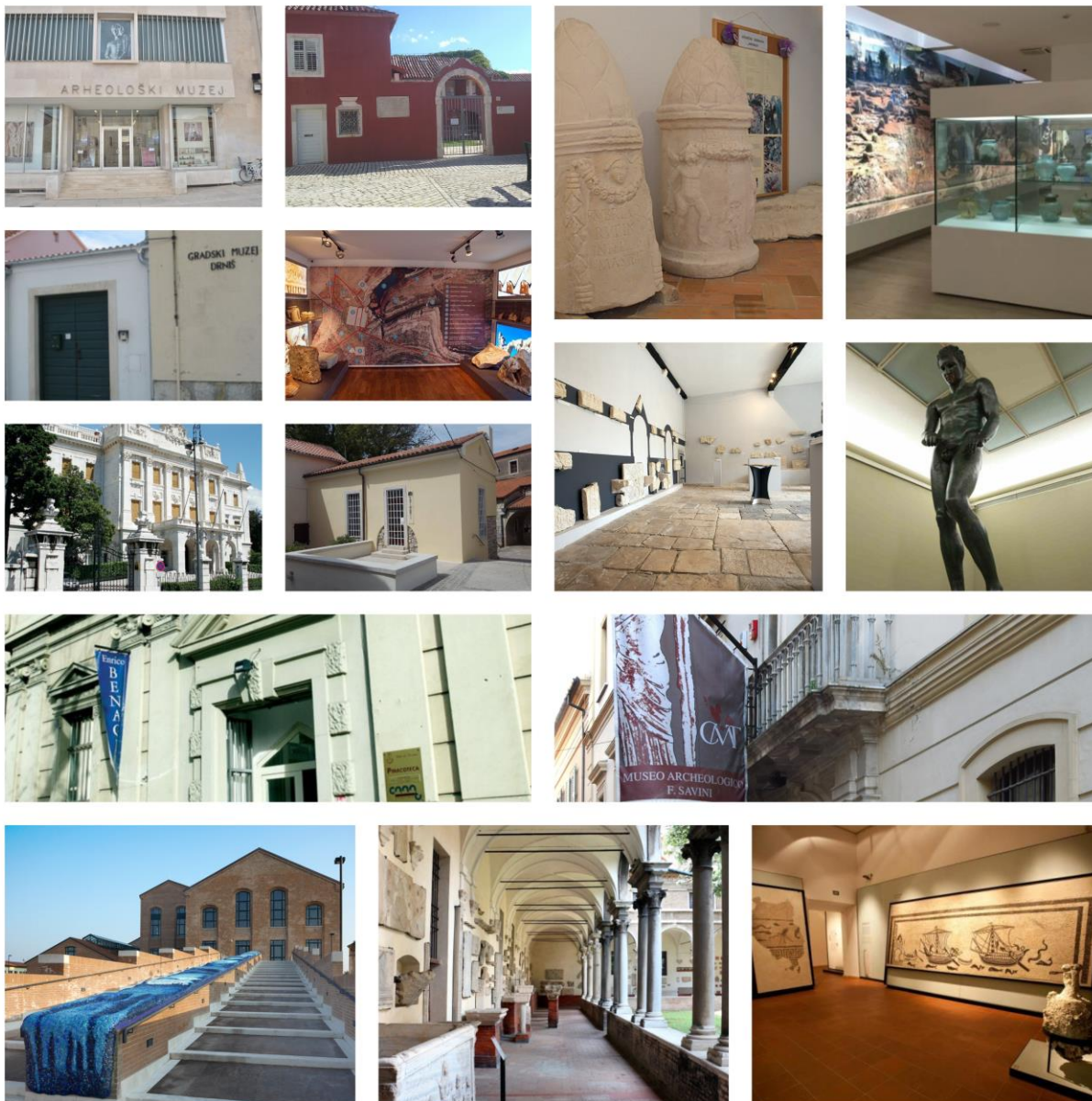


ITALY: Emilia Romagna Region – Ravenna and Rimini

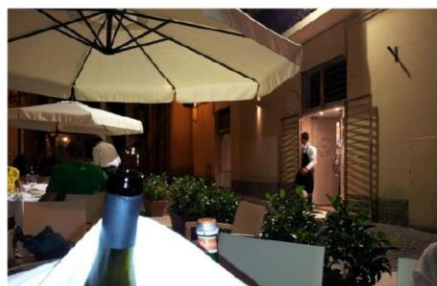


Annex 2 - Photos of structural content included in the route

Museums on the Hadriatica Romana route



Annex 3 – Photos of at least two (2) food-related services present on the evaluated route



Annex 4 – Photos of at least two (2) lodging services present on the evaluated route



Annex 5 - List of trained Heritage interpreters

Interpreters in Zadar County



Projekt „HERCULTOUR“
Radionica Interpretacije baštine
IMPACT, Zadar, 20. veljače 2019. godine

Name and Surname	Organization	
1. LOREŠ KURČIĆ	ZADAR COUNTY	V
2. ELMA KURČIĆ		
3. ANĐEKA VUKIĆ	SUPERNA d.o.o.	
4. Vinko Bakija	VISAK/UNITO	
5. SANJA BOBANOVIĆ	ZADARSKA ŽUPANIJA	
6. MAJA BUGARUJA	ZADARSKA ŽUPANIJA	



7.	Valentina Matosić	Voyages, dani za turizam	V
8.	Adrijana Lipošinić	Evrom Active Location	
9.	Maja Šarić	HGE - ZADAR	
10.	DANIJA TRAVIĆ	LEIPZIG TRAVEL, ZADAR	
11.	SONJA KOVARIĆ	TURISTIČKI ODRUŽENJE	
12.	Ana Mojica	Turistička Agencija DOSTINE	
13.	Ana Bošić Agić	Turistički odjel	
14.	Monika Hapšević	Museji Zadar	
15.	Mihovil Krčić	Museji Zadar	



16.	TATJANA RANDEČ	SHUTTLE TOURS	
17.	BERNARD HARIĆ	TZ GRADA PAGA	
18.	L. KURČIĆ BOBIĆ	"GUIDE 4 ALL"	
19.	ZRINKA ERKAN KLARIN	UTVRD	
20.	MARIJA DEJANOVIĆ	TZ GRADA NINA	
21.	VIŠESLAV ARALIĆ	UTVRD	
22.	ANA GLAVANJ	TZ GRADA NINA	
23.			
24.			



Projekt „HERCULTOUR“
Radionica Interpretacije
IMPACT, Zadar, 21. veljače

Name and Surname	Organization	
1. Maja Šarić	HGE - ZADAR	
2. ANĐEKA VUKIĆ	SUPERNA d.o.o.	
3. IVA MIJEKOVIĆ	NIU TURIZAM d.o.o.	
4. VALENTINA MATOSIĆ	Voyages, dani za turizam	
5. BERNARD HARIĆ	TZ GRADA PAGA	
6. MARIJA KURČIĆ	URUGUA VOJVOĐA BOVAT	



7.	ANA BOŠIĆ ALIĆ	TURISTIČKA ODRUŽENJE
8.	Vinko Bakija	VISAK/UNITO
9.	Ana Mojica	TURISTIČKA AGENCIJA DOSTINE
10.	TATJANA RANDEČ	SHUTTLE TOURS
11.	Monika Hapšević	MUSEJI ZADAR
12.	Mihovil Krčić	MUSEJI ZADAR
13.	VIŠESLAV ARALIĆ	UTVRD
14.	ANA GLAVANJ	TZ GRADA NINA
15.	MARIJA DEJANOVIĆ	TZ GRADA NINA



16.	MAJA BUGARUJA	ZADARSKA ŽUPANIJA
17.	SANJA BOBANOVIĆ	ZADARSKA ŽUPANIJA
18.	LOREŠ KURČIĆ BOBIĆ	"GUIDE 4 ALL"
19.	SANDRA BARIĆ	SINJELINA DPE
20.	DANIJA TRAVIĆ	LEIPZIG TRAVEL
21.		
22.		
23.		
24.		



Projekt „HERCULTOUR“
Radionica Interpretacije
IMPACT, Zadar, 22. veljače 201

Name and Surname	Organization	
1. MARIJA KURČIĆ	URUGUA VOJVOĐA BOVAT	
2. VIŠESLAV ARALIĆ	UTVRD	
3. ANA GLAVANJ	TZ GRADA NINA	
4. LOREŠ KURČIĆ BOBIĆ	"GUIDE 4 ALL" ODRUŽENJE ZA TURIZAM	
5. MARIJA DEJANOVIĆ	TZ GRADA NINA	
6. BERNARD HARIĆ	TZ GRADA PAGA	



7.	MAJA ŠARIĆ	HGE - ZADAR
8.	DANIJA TRAVIĆ	LEIPZIG TRAVEL, ZADAR
9.	Vinko Bakija	VISAK/UNITO
10.	Ana Mojica	DISTINCT - TRAVEL
11.	SANJA BOBANOVIĆ	ZADARSKA ŽUPANIJA
12.	TATJANA RANDEČ	SHUTTLE TOURS
13.	MIOVIL KRČIĆ	MUSEJI
14.	Monika Hapšević	MUSEJI
15.	ANĐEKA VUKIĆ	Superna d.o.o.



16.	Valentina Matosić	Voyages, dani za turizam
17.	IVA MIJEKOVIĆ	NIU TURIZAM d.o.o.
18.	MAJA BUGARUJA	ZADARSKA ŽUPANIJA
19.		
20.		
21.		
22.		
23.		
24.		

Interpreters in Šibenik-Knin County



POTPISNA LISTA

Radionica Okrugli stol za dionike projekta "HI
28. siječnja 2019. godine, Gradska knjižnica „Juraj Šiž“

R. Br.	Ime i prezime	Organizacija	E-mail
1.	DAMIR SLANIĆ	ŠEŽ	damir.slanic@sk-
2.	MIA ĐEKOVIĆ	UTV MIHOVIĆ	utvmihovi@op-
3.	TINA BILUŠ	UTV MIHOVIĆ	utvmihovi@gnad-
4.	MIA LEHAC	Veleučilište u Šibeniku	mialehac@vus-
5.	MATEA LOZANČIĆ	TŽG KNIN	direct@tze-kni-
6.	JOSEFA ĐURIC	TŽG DRNIŠ	info@tze-drnis-
7.	ANTONIA TOHIĆ	GRADSKI MUZEJ DRNIŠ	gradski.muzej.drnis@jma-
8.	Željana ŠIKIĆ	TZ ŠUŽI	zeljana.sikic@delmontarbenik-
9.	KATIA ŽUPAN	JU „Nacionalni park Krka“	katia.zupan@npl-



R. Br.	Ime i prezime	Organizacija	E-mail
10.	IVAN ELEŽ	TZ GRADA ŠIBENIKA	tz-sibenik@st.t-croaty-
11.	TIHANA JURIC	JU „NP KRKA“	tihana.juric@npl.hr
12.	DIANA PRIC	SIBENIK NEWS	ferc.dionio@-
13.	LUCIJA RAZINA	PROJEKTOVANJE I PROMET	lucija.razina@p-
14.	IVO GLAVIĆ	KO ŠIBENIK	ivo.glavic@hr-
15.	Marketa Flöjg	Šibenik-kninska županija	marketa.florig@sk-kn-
16.			
17.			
18.			
19.			
20.			
21.			

European Regional Development Fund

Interpreters in Primorje-Gorski Kotar County

na radionica o interpretaciji baštine u okviru projekta HERCULTO
Dolina, 18. veljače 2019. godine

prezime	Institucija	E-mail
REŠE	UDRUŽA MLADIH	iletka.pe@gmail.com
KALUPNER	ABC Travel putni ag	marketing@abctravel.hr
DIJANA	ORGANIZACIJA KREPENCI	dijana.krepenc@gmail.com
SAFAR	LOKVARKA	andrea.safar@gmail.com
Meović	Arcad	ukost@arcad.com

6.	MARTINA TUJA	Program Direktor / Tu vodiće	ma
7.	MARINA SARONJI	SEKOLUŠE TRAVEL POSREDAVAČ 'PRIMORSKI MEVAT'	ma
8.	BOJANA KLIPET	SAMOŠTALNA PRER. DJELATNOST	bi
9.	Jungin Kralj	Atelier Jungin Kralj	ki
10.	ZORAN OZBOC	KIS GORSKI KSTAR	zor
11.	ANTONIJA PROSNIK	Filozofski fakultet	an
12.	TEJA DOBROCI	JUNP SJEVERNI VELEBIT	tea
13.	IVA SILLA	SECRET ZAGREB, INTERPRET	iva
14.	VID ARBANAS	OBRT "KOTAC"	vid

15.	SILVIJA JACIC	Prom
16.	PEGAL HLG	REG 6
17.	JELENA HOLENKO	MRC

Edukativna radionica o interpretaciji baštine u okviru
Studijsko putovanje, 19. veljače 2019. g

Ime i prezime	Institucija
1. MARTINA REŠE	UDRUŽA MLADIH
2. BLANKA KALUPNER	ABC Travel putni agencija market
3. KREPENCI DIJANA	ORGANIZACIJA KREPENCI
4. TEJA DOBROCI	JUNP SJEVERNI VELEBIT
5. ANDREA SAFAR	LOKVARKA

6.	MARINA SARONJI	SEKOLUŠE TRAVEL POSREDAVAČ 'PRIMORSKI MEVAT'	ma
7.	MARTINA TUJA	TUJA VOĐIC	ma
8.	MARKO MEVIĆ	Arcad	ki
9.	IVA SILLA	SECRET ZAGREB INTERPRET EUROPE	i
10.	ZORAN OZBOC	KIS GORSKI KSTAR	zor
11.	ANTONIJA PROSNIK	Filozofski fakultet ZG	an
12.	BOJANA KLIPET	SAMOŠTALNA PRER. DJELATNOST PRER. DJELATNOST	bi
13.	JELENA HOLENKO PRO	LYNX AND FOX	j
14.	VID ARBANAS	OBRT "KOTAC"	vid

15.	SILVIJA JACIC
16.	PEGAL HLG

Edukativna radionica o interpretaciji baštine u okviru
Studijsko putovanje, 20. veljače

Ime i prezime	Institucija
1. MARTINA REŠE	UDRUŽA MLADIH
2. BLANKA KALUPNER	ABC Travel putni agencija
3. KREPENCI DIJANA	ORGANIZACIJA KREPENCI
4. TEJA DOBROCI	JUNP SJEVERNI VELEBIT
5. ANDREA SAFAR	LOKVARKA

6.	PEGAL HLG	REG 6	REG 6
7.	MARINA SARONJI	SEKOLUŠE TRAVEL POSREDAVAČ 'PRIMORSKI MEVAT'	ma
8.	MARTINA TUJA	TUJA VOĐIC	ma
9.	MARKO MEVIĆ	Arcad	ki
10.	ZORAN OZBOC	KIS GORSKI KSTAR	zor
11.	ANTONIJA PROSNIK	Filozofski fakultet	an
12.	BOJANA KLIPET	SAMOŠTALNA PRER. DJELATNOST PRER. DJELATNOST	bi
13.	IVA SILLA	SECRET ZAGREB INTERPRET EUROPE	iva
14.	VID ARBANAS	OBRT "KOTAC"	vid
15.	SILVIJA JACIC	SECRET ZAGREB	Silvijska

15.	JELENA HOLENKO
-----	----------------

Interpreters in Abruzzo Region – Teramo



2014 – 2020 Interre V-A Italy – Croatia CBC Programme. Progetto HerculTour

WORKSHOP "VALORIZZAZIONE DEL PATRIMONIO LOCALE: OPPORTUNITA' E STRATEGIE PER LA PROMOZIONE TURISTICA INTEGRATA DEL TERRITORIO" TERAMO SEDE ADSU 21 GIUGNO 2019

Nome e Cognome	Firma
MARIA CRISTINA DELLA RIPA	
FRANCESCO MIGNINI	
ILENIA OCCHIOCIUPO	
MARIA PULCIANI	
NICOLA FANSELLA	
ROSSELLA LIBERATI	
MARINA DI GIACOMO	
MARCO DI FILIPPO	
VALENTINA ANGELOTTI	
SEVERINO DI DONATO	
EDUARDO CA...	
ROBERTO PAUCA	
DONALDO WESCHNER	
MAURO VAURI	
ALESSANDRO SANTORO	
MARINA DI GIACOMO	
LEA DE BONDICIS	

2014 – 2020 Interre V-A Italy – Croatia CBC Programme. Progetto HerculTour

WORKSHOP "VALORIZZAZIONE DEL PATRIMONIO LOCALE: OPPORTUNITA' E STRATEGIE PER LA PROMOZIONE TURISTICA INTEGRATA DEL TERRITORIO" TERAMO SEDE ADSU 21 GIUGNO 2019

Nome e Cognome	Firma
ELIA HANSON	
DILVA PANZONE	
MARIA GEROMI	
ENRICO CIPOLETTI	
VALENTINO PICO	
MARIO PALERMO	

2014 – 2020 Interre V-A Italy – Croatia CBC Programme. Progetto HerculTour

WORKSHOP "VALORIZZAZIONE DEL PATRIMONIO LOCALE: OPPORTUNITA' E STRATEGIE PER LA PROMOZIONE TURISTICA INTEGRATA DEL TERRITORIO" TERAMO SEDE ADSU 20 GIUGNO 2019

Nome e Cognome	Firma
MARIA CRISTINA DELLA RIPA	
MARCO DI FILIPPO	
FABRIZIO CANTARUCCI	
SEVERINO DI DONATO	
MAURO VAURI	
VALENTINA ANGELOTTI	
ALESSANDRO SANTORO	
MARINA DI GIACOMO	
FABRIZIO FIDANZI	
EUGENIO MARITA	
DENIS MIGNINI	
LUCA VENTIGLIA	
FILIPPO MARRA	
ROSSELLA LIBERATI	
ENRICO CIPOLETTI	
VALENTINO PICO	
MARIO PALERMO	

Nome e Cognome	Firma
DILVA PANZONE	
FRANCESCO MIGNINI	
LUCA VENTIGLIA	
MARIA CRISTINA DELLA RIPA	
FABRIZIO CANTARUCCI	
FIDANZI ROSARIA	
ESPOSITO FRANCESCO	
ANGELOTTI VALENTINA	
EUGENIO MARITA	
MAURO VAURI	
MARINA DI GIACOMO	
CABRIELLA COSENZA	
MARCO DI FILIPPO	
DENIS MIGNINI	

DONALDO WESCHNER
ALESSANDRO SANTORO
MARIA PULCIANI
ROSSELLA LIBERATI

Interpreters in Emilia Romagna Region – Ravenna and Rimini



Project „HERCULTOUR“
Meeting with DTR stakeholders
Ravenna, 26 July 2019
12:00 am





R

Name and Surname	Organization	E-mail	Signature
1. FRANCESCA LITA	FEDERAZIONE RUCAMPANI	lita@zeleniherc.org	
2. SILVIA BARTOLI	Comune Fieschiappola	silviam@comune.fieschiappola.it	
3. LAURA LAGHI	Comune Fieschiappola	laura.laghi@comune.fieschiappola.it	
4. ROSANNA CERRINI	ASCOM di CORTONA	rosanna.cerrini@comuni.cortona.it	
5. SILVIO RIVI	COMUNE CERIGNA	silvio.rivi@comune.cerigna.it	
6. TANIA PIGNATI	D.T.P.	tania.pignati@comune.cerigna.it	
7. ALESSIO FLEGO	SPINTEK SRL	FLEGO@SPINTEK.MANAGEMENT	

8.	SARA LAGHI	COMUNE DI RAVENNA	s.laghi@comune.ra.it
9.	M. GRAZIA MARINI		
10.	ORIKTO PLOMARI	COMUNE DI RIMINI	orikto.plo@comune.rimini.it
11.			
12.			
13.			
14.			

HERCULTOUR Stakeholder roundtable 5th February 2019 Rimini, Italy

SURNAME	ORGANIZATION AND E-MAIL	SIGNATURE
BERENZI	CONSORZIO NATARE NATURA Valle Savianese e Libero IV	
BOCCINI	BOCCINI	
BOLOGNI	DESTINAZIONE TURISTICA RAVENNA	
BOLOGNI	TURISTICO COMUNE RN	
BRINAK	CULTURA COMUNE RN	
BRINAK	EQUILIBRATA Uff. Stampa di Romagna	

HERCULTOUR Stakeholder roundtable 5th February 2019 Rimini, Italy

SURNAME	ORGANIZATION AND E-MAIL	SIGNATURE
BOCCINI	COMUNE DI SERRAVALLE S/R	
MESORI	RIMINI RESERVATION moneta@riminireservation.it	
MARI	PROMOZIONE ALBERGHIERA vicinella@promozionetourism.rimini.it	
NO	A33 COMUNE RAVENNA	
RIVARDI	FONDAZIONE VERDEBELLE info@fondazioneverdebella.org	
IANCIS	DESTINAZIONE TURISTICA SPINTEK SRL - Romagna, emilia - romagna - it	

HERCULTOUR Stakeholder roundtable 5th February 2019 Rimini, Italy

SURNAME	ORGANIZATION AND E-MAIL	SIGNATURE
ACCOLI	AGT. ROMAGNA ass.agtromagna@gmail.com	
GUARONI	ASSOCIAZIONE ILEC - info@ilec.it	
BIANCHI	ASSOCIAZIONE 49AC INFO@49AC.IT	
LI	COMPTON@ASCOM.RM.IT	
SERIO	DANIELA, SERIO @ITALIATESTA.COM	
LEA	COMUNE DI SASSIGNANO S/R ASSESSORE	

HERCULTOUR Stakeholder roundtable 5th February 2019 Rimini, Italy

SURNAME	ORGANIZATION AND E-MAIL	SIGNATURE
FINI	COMUNE DI CATTOLICA SIVIA@CATTOLICA.NET	
KARONI	ASSOCIAZIONE TERRE CENTOPIRE CEMMATE	
IDELLI	ASSOCIAZIONE 49AC INFO@49AC.IT	
MICOLA	LA TRADIZIONE VIARESE	
STICCHI	acompanagnatore guida europa@sticchi@yahoo.it	
COLATTI	ASSOCIAZIONE CANTIERE COLLE SAN DOMENICO info@cantierecolle.com	

HERCULTOUR Stakeholder roundtable 5th February 2019 Rimini, Italy

SURNAME	ORGANIZATION AND E-MAIL	SIGNATURE
BOZZO	MONTEBELLUNA BIBLIOTECA@MONTEBELLUNA.IT	
MELLI	MONTANARI TOUR NIRELLI@MONTANARITOUR.IT	
TESI	ASSOCIAZIONE COMUNE 49AC	
ENCOMI	ASCOM COOPERATIVA COMUNE SANGUANO NUCLEO DEL COMITATO	
DI LUVA	LEGIO VI FERRENA LEGIOVI@FERRENA.GUBERNO.IT	
COLATTI	EGOCENTRO SCEL event@firmatour.it	

HERCULTOUR Stakeholder roundtable 5th February 2019 Rimini, Italy

SURNAME	ORGANIZATION AND E-MAIL	SIGNATURE
FLEGO	SPINTEK SRL INFO@SPINTEK.MANAGEMENT	
ERBASTI	PIANO STRATEGICO DI RIMINI	
ARZI	COMUNE POGGIO TORRIANA	
A	COMUNE DI GROSSETO	
ELLI	MA. DI SASSI RAVENNA MICHELE, USAREMI@COMUNE.RA.IT	
	ANESTIMATIOS lombardi@ecocentromi.it	